



**NIGERIAN UPSTREAM
PETROLEUM REGULATORY
COMMISSION**

Nigeria 2025

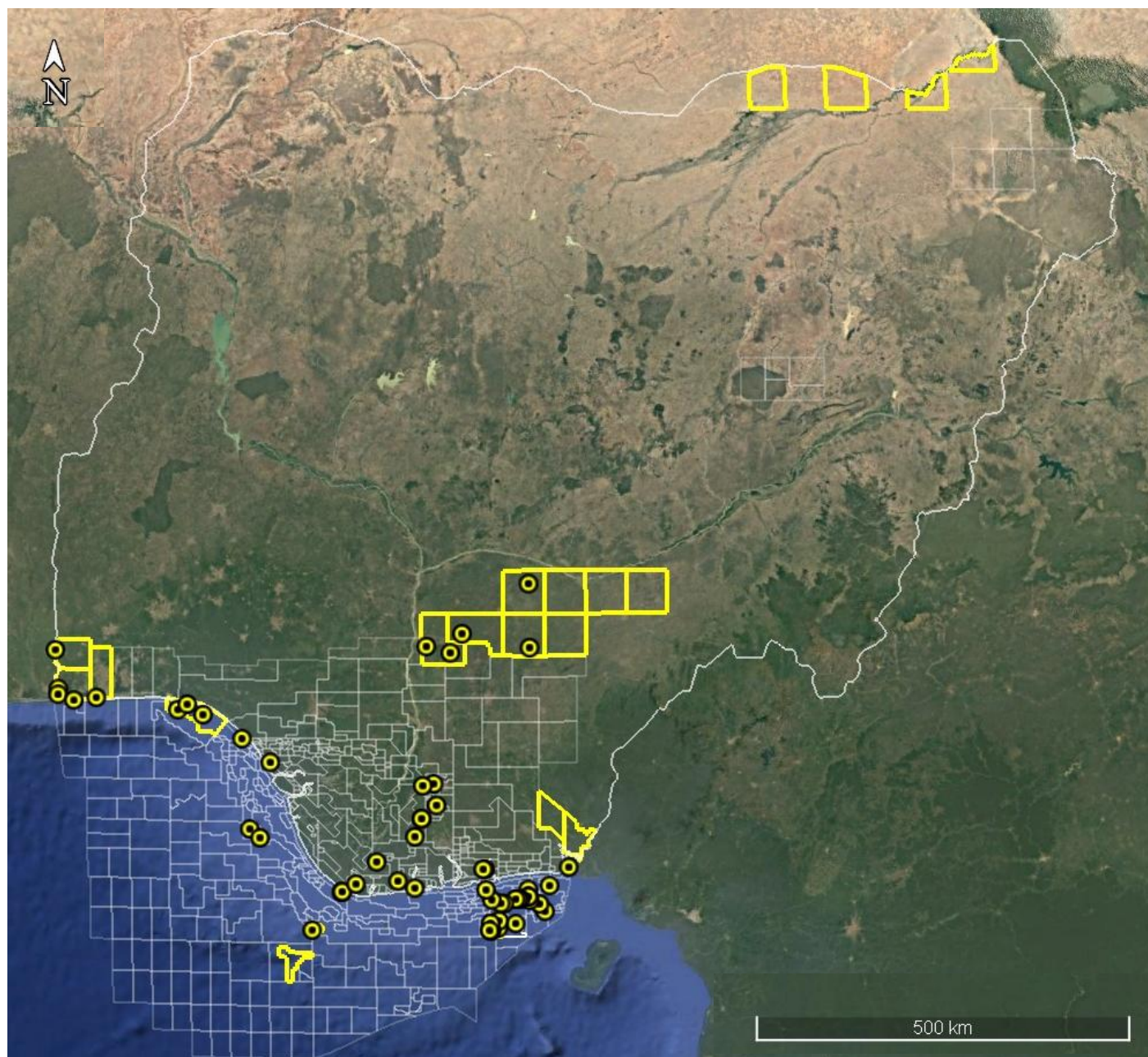
Licensing Round

PPL 800

Nigeria 2025 Licensing Round Block Information Table



**NIGERIAN UPSTREAM
PETROLEUM REGULATORY
COMMISSION**



BENUE TROUGH BLOCKS ON OFFER

| Block Name | Block km ² (Approx.) | Data type | Data km | Terrain |
|----------------|------------------------------------|--|---------|-------------|
| PPL 800 | 2498.9 | Ocheku River-1, Adoka-1, Bopo-1, Okpaya-1 | | Land |
| PPL 801 | 2537.6 | | | Land |
| PPL 802 | 2467.1 | | | Land |
| PPL 803 | 2491.0 | | | Land |

For all enquires please contact us at br2025@nuprc.gov.ng

Nigeria 2025 Licensing Round

PPL 800



**NIGERIAN UPSTREAM
PETROLEUM REGULATORY
COMMISSION**

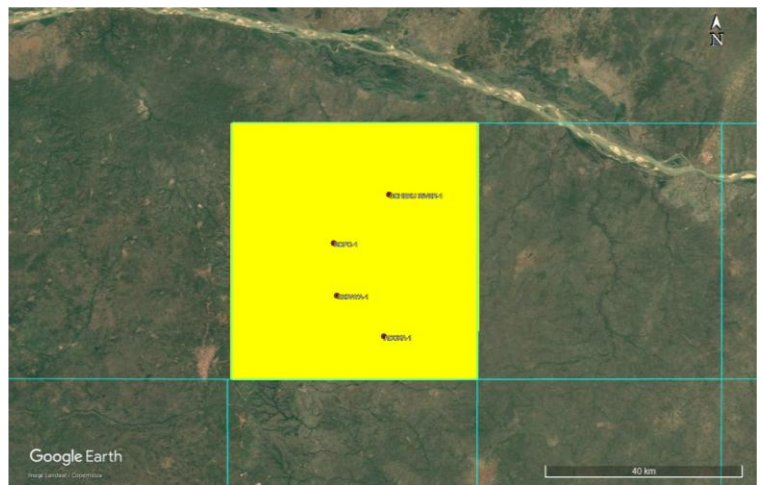
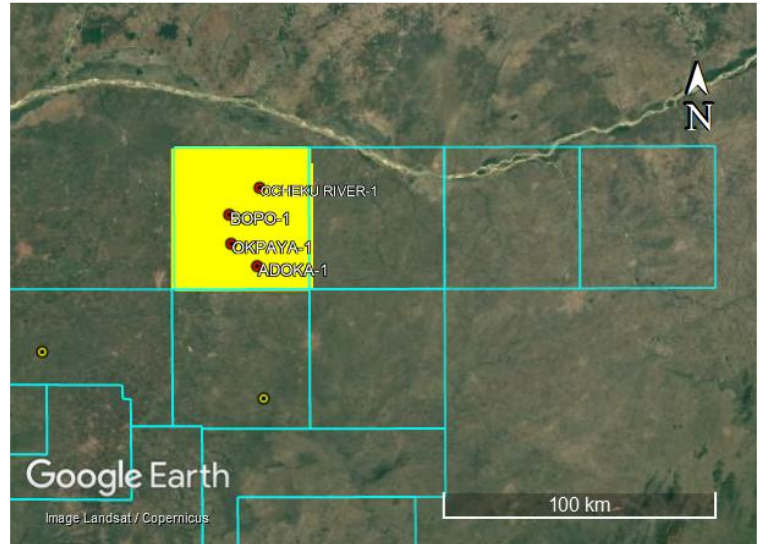
PPL-800 covers an area of approximately 2498.9km² and is situated within the Southern Benue Trough, a Cretaceous rift-sag basin in southeastern Nigeria. The blocks lie within the structural domain influenced by Santonian compression, which generated numerous folds, faults, and sub-basin depressions.

PPL 800 block is located on the southwestern part of the basin. The block occupies relatively frontier inland areas in Southern Benue Trough. 'coverage across the block.

Four wells - Ocheku River-1 drilled by TotalEnergies in 1967 to a TD of 6,020 feet, Shell drilled Adoka-1 in 1955 to 3,199 feet and both Bopo-1 and Okpaya-1 in 1954 to 3,196 and 3,242 feet respectively, all measured depths.

The primary source rocks underlying these blocks are the Eze-Aku/Enugu Shales and the Nkporo Shale, both of which are organic-rich and capable of generating gas and minor oil. The blocks are associated with a combination of structural and stratigraphic traps. The Santonian compressional phase created numerous anticlines, faulted closures, and tilted blocks that can host hydrocarbons. Additionally, sand pinch-outs, channel margins, and facies transitions in the Eze-Aku and Nkporo successions offer stratigraphic trapping opportunities.

The seismic situation map is not available.





NIGERIAN UPSTREAM PETROLEUM REGULATORY COMMISSION

For all inquiries, please
contact us at

br2025@nuprc.gov.ng