



**NIGERIAN UPSTREAM
PETROLEUM REGULATORY
COMMISSION**

Nigeria 2025

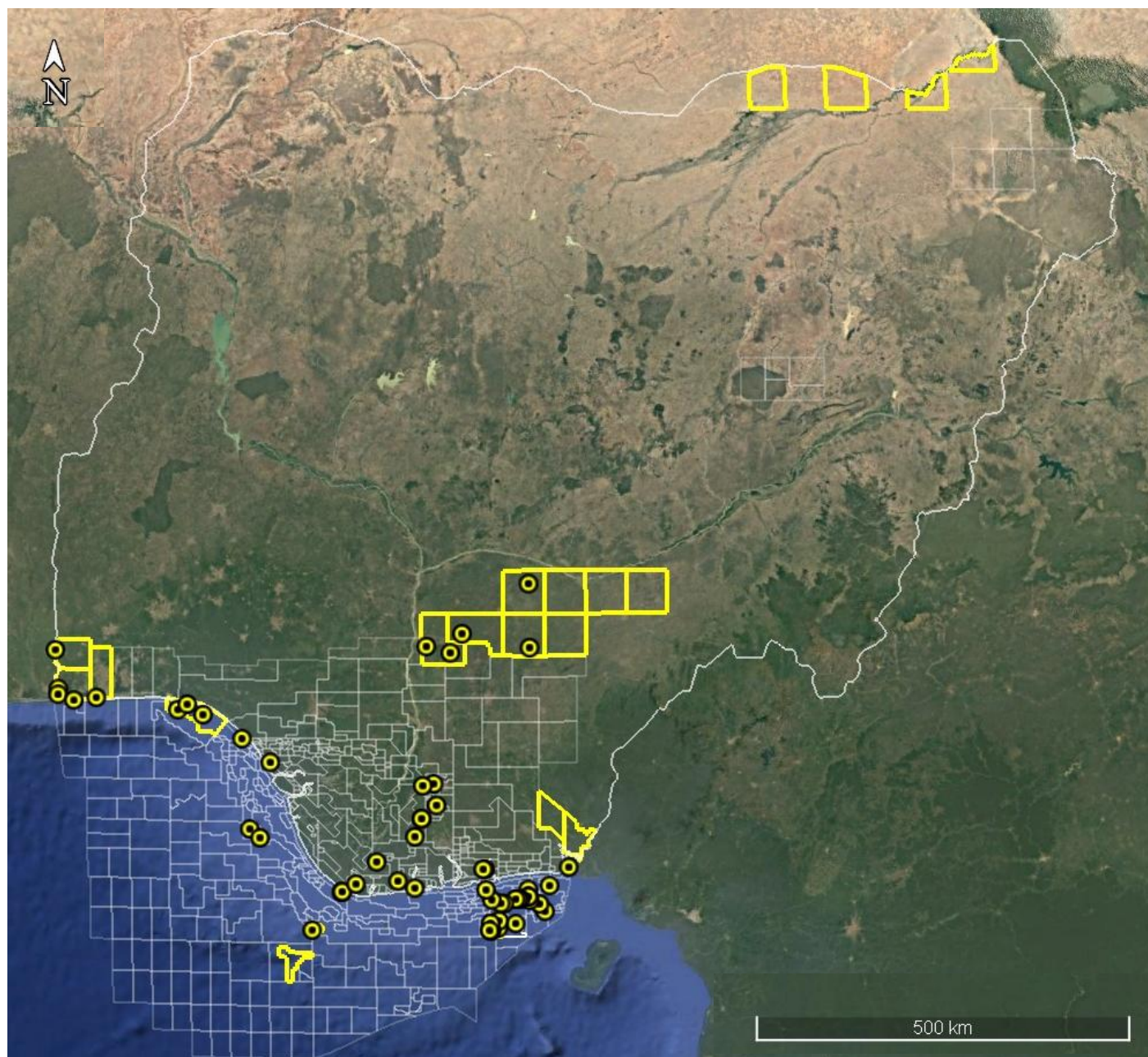
Licensing Round

PPL 802

Nigeria 2025 Licensing Round Block Information Table



**NIGERIAN UPSTREAM
PETROLEUM REGULATORY
COMMISSION**



BENUE TROUGH BLOCKS ON OFFER

Block Name	Block km ² (Approx.)	Data type	Data km	Terrain
PPL 800	2498.9	Ocheku River-1, Adoka-1, Bopo-1, Okpaya-1		Land
PPL 801	2537.6			Land
PPL 802	2467.1			Land
PPL 803	2491.0			Land

For all inquiries, please contact us at br2025@nuprc.gov.ng

Nigeria 2025 Licensing Round

PPL 802

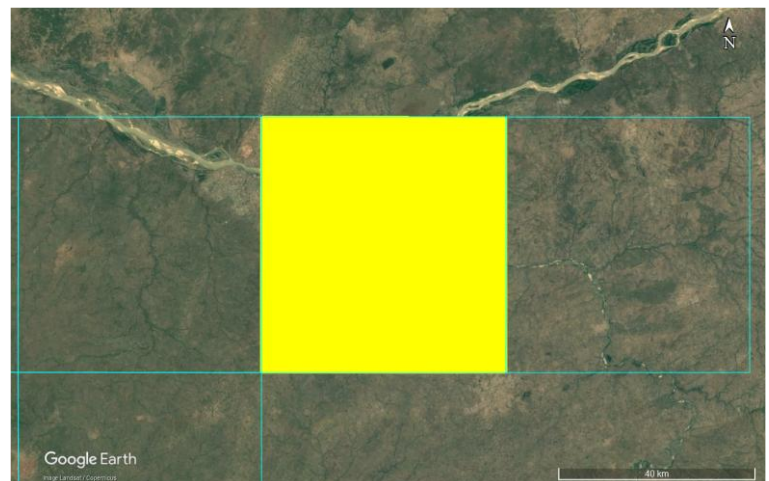
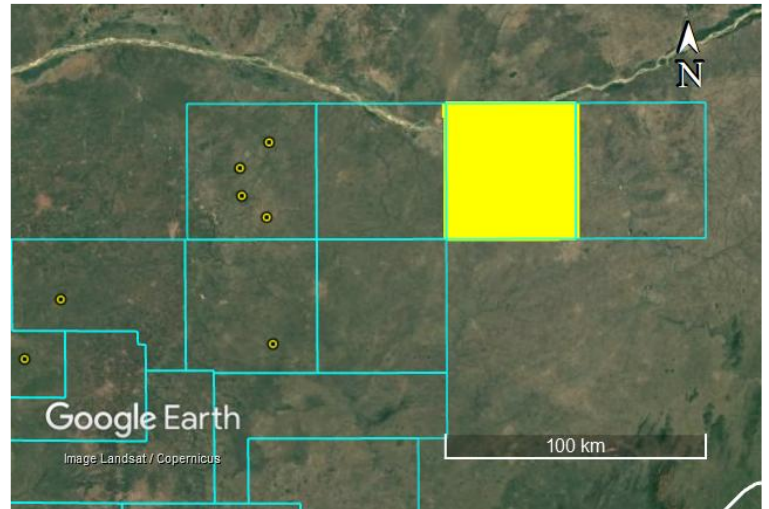


**NIGERIAN UPSTREAM
PETROLEUM REGULATORY
COMMISSION**

PPL 802 covers an area of approximately 2467.1km² and is situated within the Southern Benue Trough, a Cretaceous rift-sag basin in southeastern Nigeria. The blocks lie within the structural domain influenced by Santonian compression, which generated numerous folds, faults, and sub-basin depressions.

PPL 802 block is located on the southeastern part of the basin. The block occupies relatively frontier inland areas in Southern Benue Trough. The most recent seismic data coverage across the block is of early 80s vintage but unavailable. No well has been drilled on the block.

The primary source rocks underlying these blocks are the Eze-Aku/Enugu Shales and the Nkporo Shale, both of which are organic-rich and capable of generating gas and minor oil. The blocks are associated with a combination of structural and stratigraphic traps. The Santonian compressional phase created numerous anticlines, faulted closures, and tilted blocks that can host hydrocarbons. Additionally, sand pinch-outs, channel margins, and facies transitions in the Eze-Aku and Nkporo successions offer stratigraphic trapping opportunities.





NIGERIAN UPSTREAM PETROLEUM REGULATORY COMMISSION

For all inquiries, please
contact us at

br2025@nuprc.gov.ng