



**NIGERIAN UPSTREAM  
PETROLEUM REGULATORY  
COMMISSION**

# **Nigeria 2025**

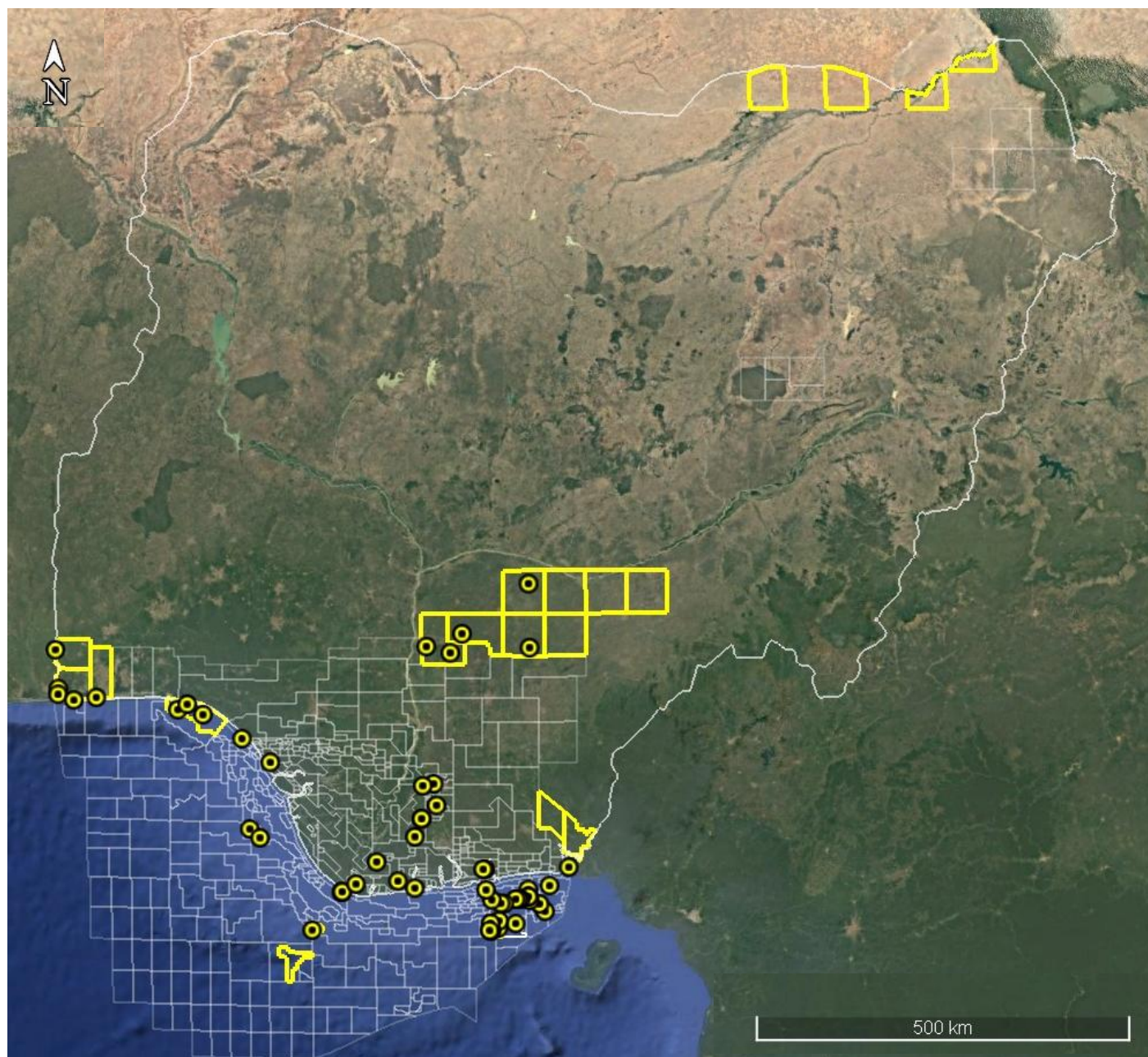
## **Licensing Round**

**PPL 701**

# Nigeria 2025 Licensing Round Block Information Table



**NIGERIAN UPSTREAM  
PETROLEUM REGULATORY  
COMMISSION**



## CHAD BASIN BLOCKS ON OFFER

Block Name	Block km <sup>2</sup> (Approx)	Data type	Data km	Terrain
PPL 700	992.6	2D Seismic data		Land
<b>PPL 701</b>	<b>2058.4</b>	<b>2D Seismic data</b>		<b>Land</b>
PPL 702	2338.5	2D Seismic data		Land
PPL 703	1326.0	2D Seismic data		Land

For all enquires please contact us at [br2025@nuprc.gov.ng](mailto:br2025@nuprc.gov.ng)



# Nigeria 2025 Licensing Round

## PPL 701



**NIGERIAN UPSTREAM  
PETROLEUM REGULATORY  
COMMISSION**

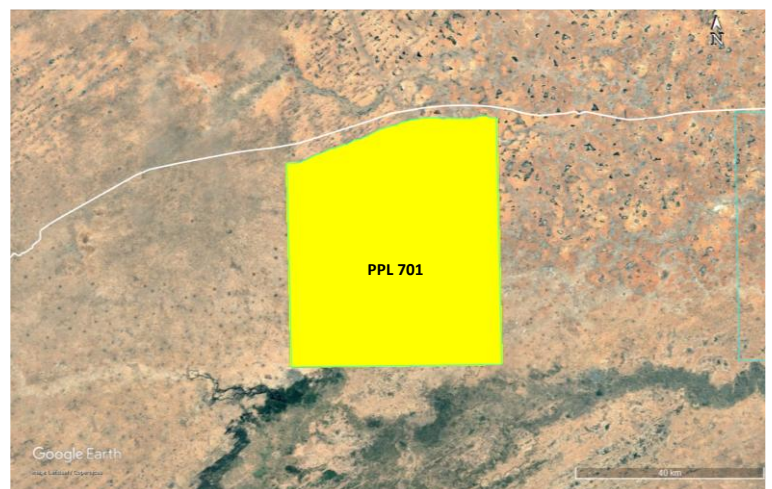
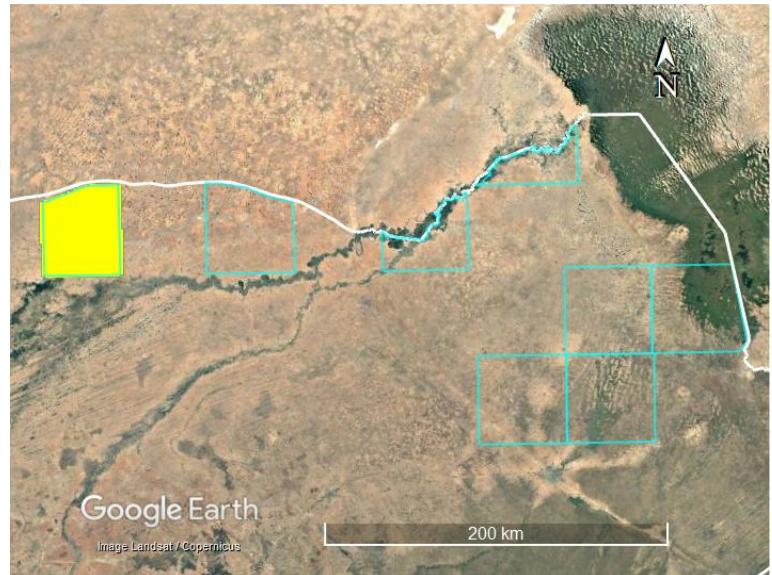
The PPL-701 covers an area of approximately 2058.4km<sup>2</sup> which lies along Nigeria's northeastern boundary with the Republic of Niger, extending across Yobe State. The block occupies the frontier onshore area within the Nigerian sector of the Chad Basin, an intra-cratonic rift basin formed during early Cretaceous extension related to the West and Central African Rift System (WCARS).

Sediment thickness is over 27,000 feet of early Cretaceous – recent sediments to the south of the block and estimated above the Basement complex. With good geothermal gradient, source rock is matured to expel oil / gas.

The stratigraphic succession in PPL-701 block includes the Bima Sandstone, Gongila Formation, Fika Shale, Kerri-Kerri Formation, and younger Quaternary deposits. Reservoir prospects are strongest in the Bima Sandstone, which contains thick, coarse to medium-grained fluvial sand bodies with good porosity and permeability. Additional reservoir potential exists within the Gongila marine sandstones, which form localized but high-quality transgressive sand bodies. In shallower parts of the blocks, the Kerri-Kerri Formation also hosts porous continental sandstones that may serve as secondary reservoirs. The main Source rocks are the Gongila Formation shale and the Fika shale both of which contain moderate to good organic richness and Type II/III kerogene.

Different vintages of 2D seismic data acquired by NNPC are available on the block. No well has been drilled to date.

Generally, the petroleum system is established in the region where the block is situated but more exploration effort is required.





# **NIGERIAN UPSTREAM PETROLEUM REGULATORY COMMISSION**

For all enquires, please  
contact us at

[br2025@nuprc.gov.ng](mailto:br2025@nuprc.gov.ng)