

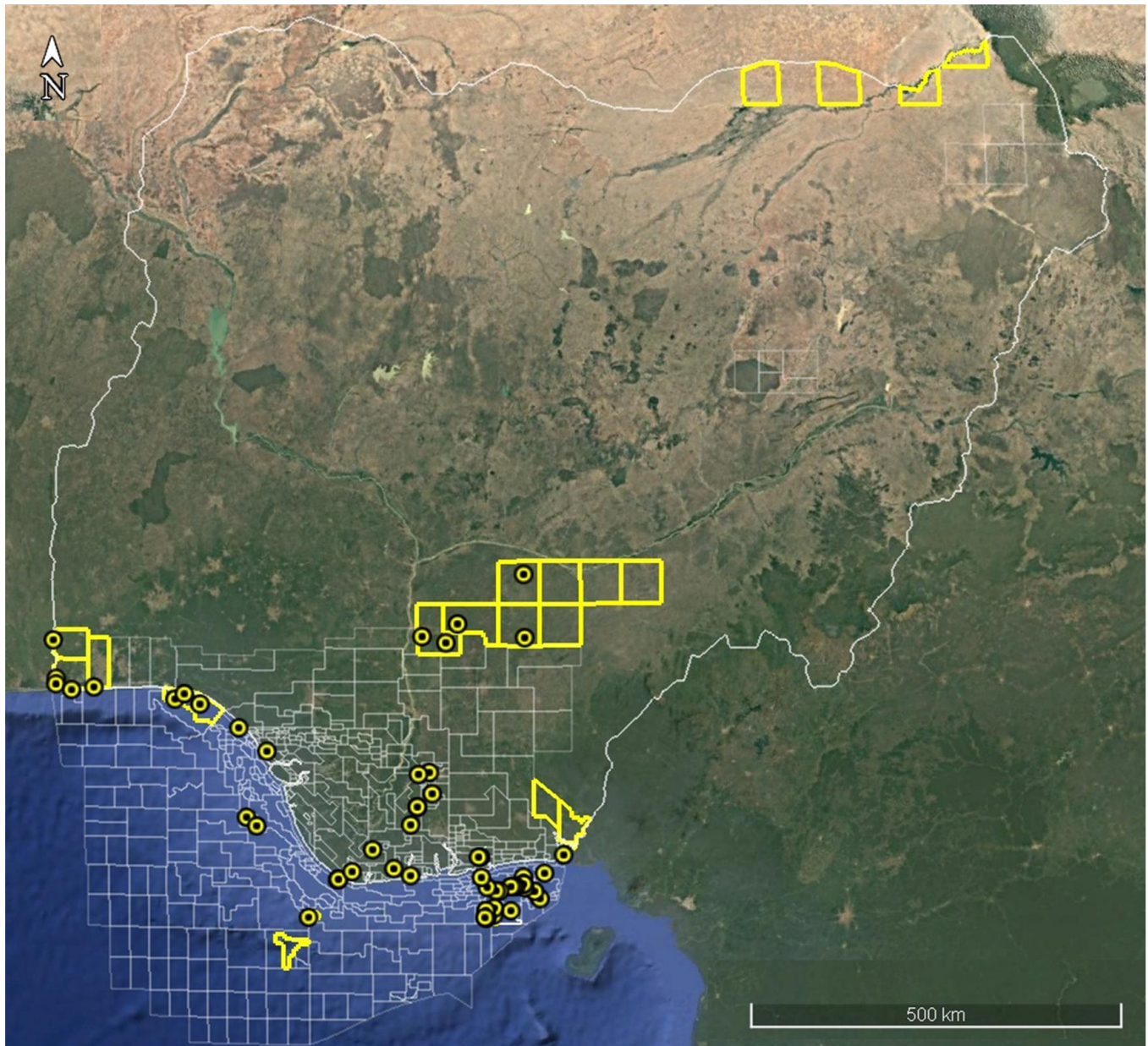


**NIGERIAN UPSTREAM  
PETROLEUM REGULATORY  
COMMISSION**

# **Nigeria 2025**

## **Licensing Round**

**PPL 2A51**


**EASTERN NIGER DELTA BLOCKS ON OFFER**

BLOCK NAME	BLOCK KM <sup>2</sup> (Approx.)	DATA TYPE	DATA KM <sup>2</sup>	TERRAIN
PPL 2A29	xx	3D Seismic + Okoroma-1	xx	Onshore
PPL 2A30	xx	3D Seismic + Twoni-1	xx	Onshore
PPL 2A32	xx	3D Seismic + Yorla South-1 & 2	xx	Onshore
PPL 2A38	xx	Idege-1	xx	Onshore
PPL 2A46	xx	3D Seismic + Amara-1	xx	Onshore
PPL 2A47	xx	3D Seismic + Anuri-1	xx	Onshore
PPL 2A48	xx	3D Seismic + Akiapiri-1	xx	Onshore
PPL 2A50	xx	3D Seismic + Ndele-1	xx	Onshore
<b>PPL 2A51</b>	<b>18</b>	<b>3D Seismic + Oforola-1</b>	<b>xx</b>	<b>Onshore</b>
PPL 2A54	xx	3D Seismic + Umudioga-1	xx	Onshore

For all enquires please contact us at [br2025@nuprc.gov.ng](mailto:br2025@nuprc.gov.ng)

# Nigeria 2025 Licensing Round

## PPL 2A51



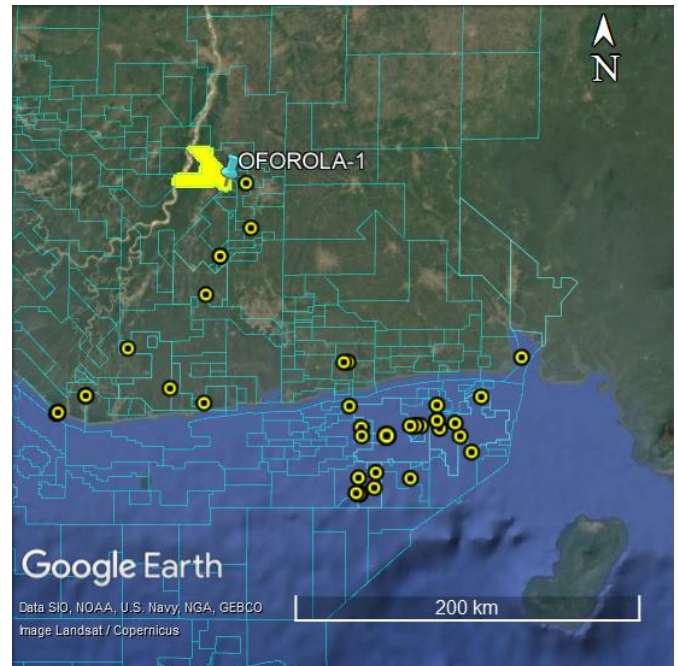
**NIGERIAN UPSTREAM  
PETROLEUM REGULATORY  
COMMISSION**

PPL 2A51 covers an area excised from OML 20 in accordance with the Petroleum Industry Act (PIA) 2021. PPL 2A51 is situated in an onshore land terrain Eastern Niger Delta. The block is covered by 3D seismic data acquired by SPDC.

The Oforola field is located in the Greater Ughelli Depobelt of the Niger-Delta sedimentary basin. The closest flowstations are those of Agu field (Sterling) and Egbema field (Renaissance Africa)

Oforola-1 was drilled by SPDC between April 9 and May 11, 1972, to a total depth of 7,907 feet (MD). The well penetrated a total of 291 feet gross pay thickness of oil in seven (7) sands. The well is subsequently plugged and abandoned.

OML 20 is currently operated by Renaissance.







# **NIGERIAN UPSTREAM PETROLEUM REGULATORY COMMISSION**

For all inquiries, please  
contact us at

[br2025@nuprc.gov.ng](mailto:br2025@nuprc.gov.ng)