



**NIGERIAN UPSTREAM  
PETROLEUM REGULATORY  
COMMISSION**

# **Nigeria 2025**

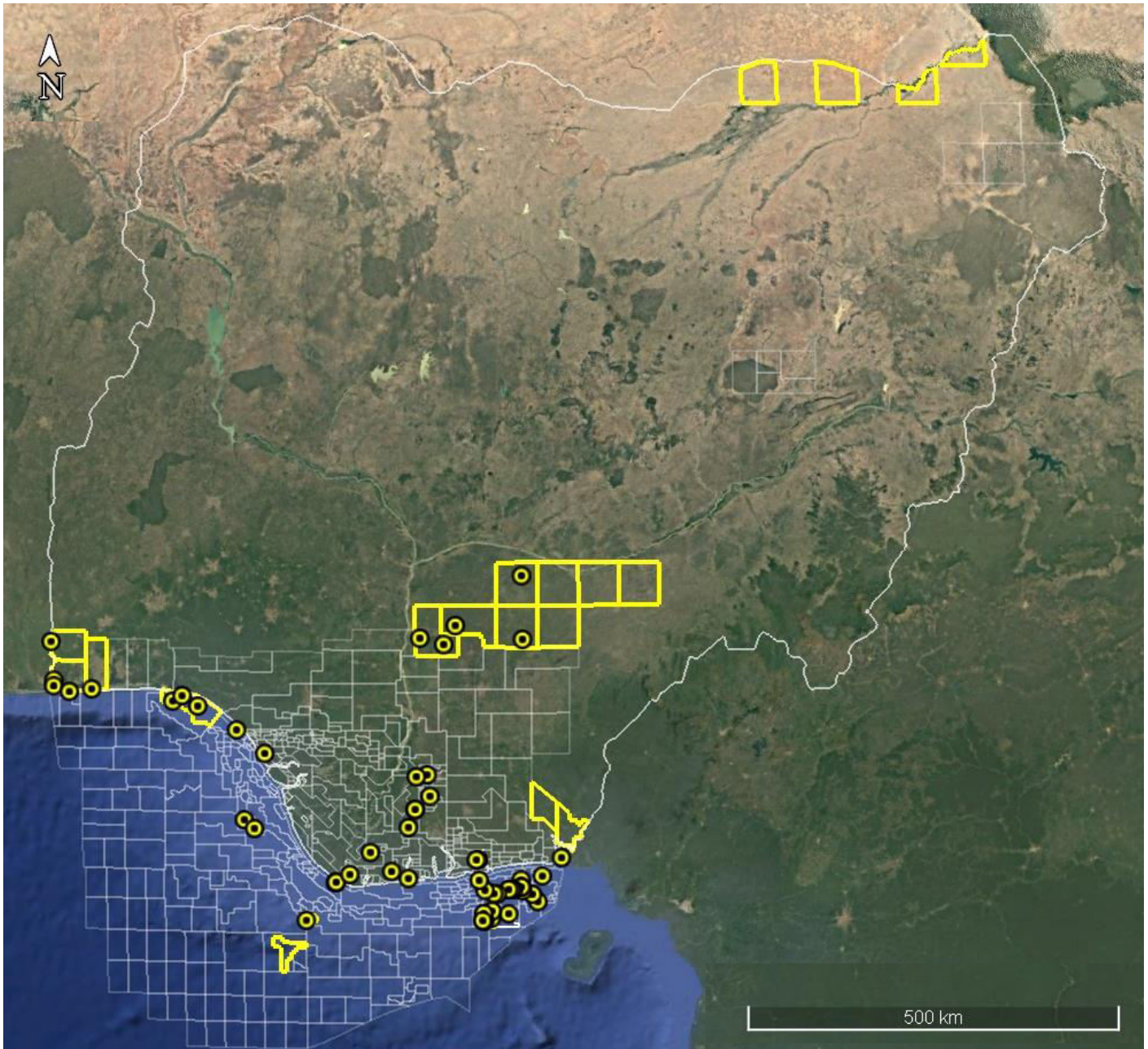
## **Licensing Round**

**PPL 800**

Nigeria 2025 Licensing Round Block  
**Information Table**



**NIGERIAN UPSTREAM  
 PETROLEUM REGULATORY  
 COMMISSION**



**BENUE TROUGH BLOCKS ON OFFER**

Block Name	Block km <sup>2</sup> (Approx.)	Data type	Data km	Terrain
<b>PPL 800</b>	<b>1320.66</b>	<b>Ocheku River-1</b>		<b>Land</b>
PPL 801	xxx			Land
PPL 802	xxx			Land
PPL 803	xxx			Land

For all enquires please contact us at [br2025@nuprc.gov.ng](mailto:br2025@nuprc.gov.ng)

# Nigeria 2025 Licensing Round

## PPL 800



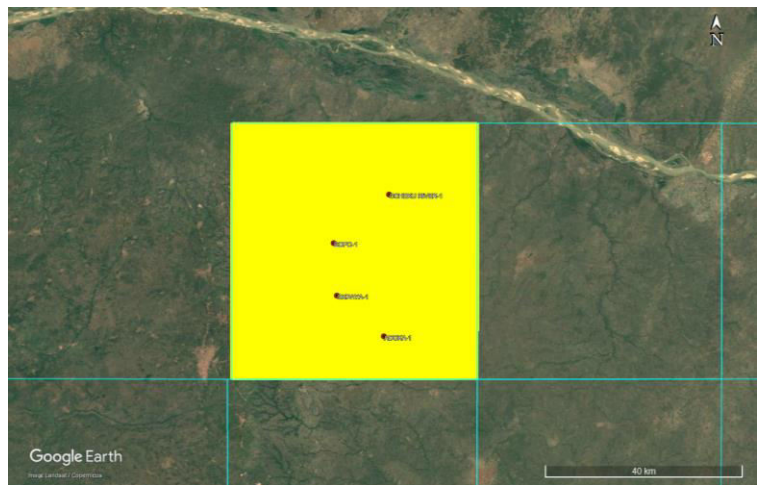
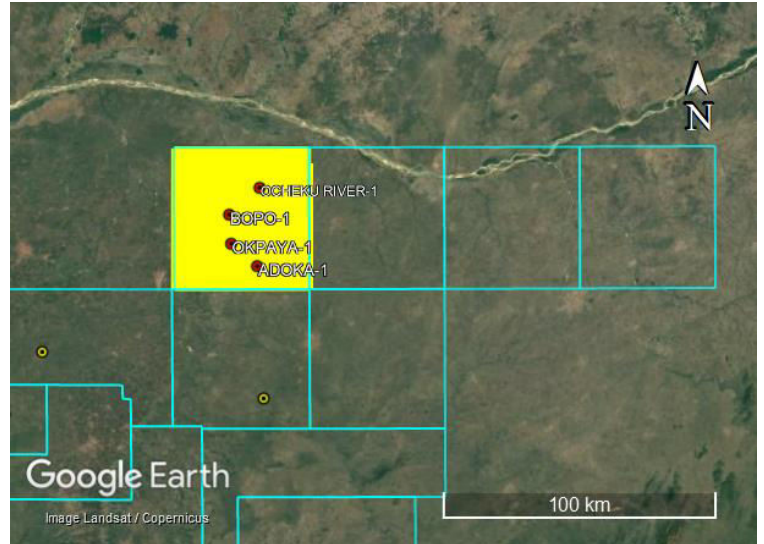
**NIGERIAN UPSTREAM  
PETROLEUM REGULATORY  
COMMISSION**

PPL-800 is situated within the Southern Benue Trough, a Cretaceous rift-sag basin in southeastern Nigeria. The blocks lie within the structural domain influenced by Santonian compression, which generated numerous folds, faults, and sub-basin depressions.

PPL 800 block is located on the southwestern part of the basin. The block occupies relatively frontier inland areas in Southern Benue Trough.

Ocheku River-1 was drilled by TotalEnergies in 1967 to a TD of 6,020 feet.

The primary source rocks underlying these blocks are the Eze-Aku/Enugu Shales and the Nkporo Shale, both of which are organic-rich and capable of generating gas and minor oil. The blocks are associated with a combination of structural and stratigraphic traps. The Santonian compressional phase created numerous anticlines, faulted closures, and tilted blocks that can host hydrocarbons. Additionally, sand pinch-outs, channel margins, and facies transitions in the Eze-Aku and Nkporo successions offer stratigraphic trapping opportunities.





# NIGERIAN UPSTREAM PETROLEUM REGULATORY COMMISSION

For all inquiries, please  
contact us at

[br2025@nuprc.gov.ng](mailto:br2025@nuprc.gov.ng)