



**NIGERIAN UPSTREAM
PETROLEUM REGULATORY
COMMISSION**

Nigeria 2025

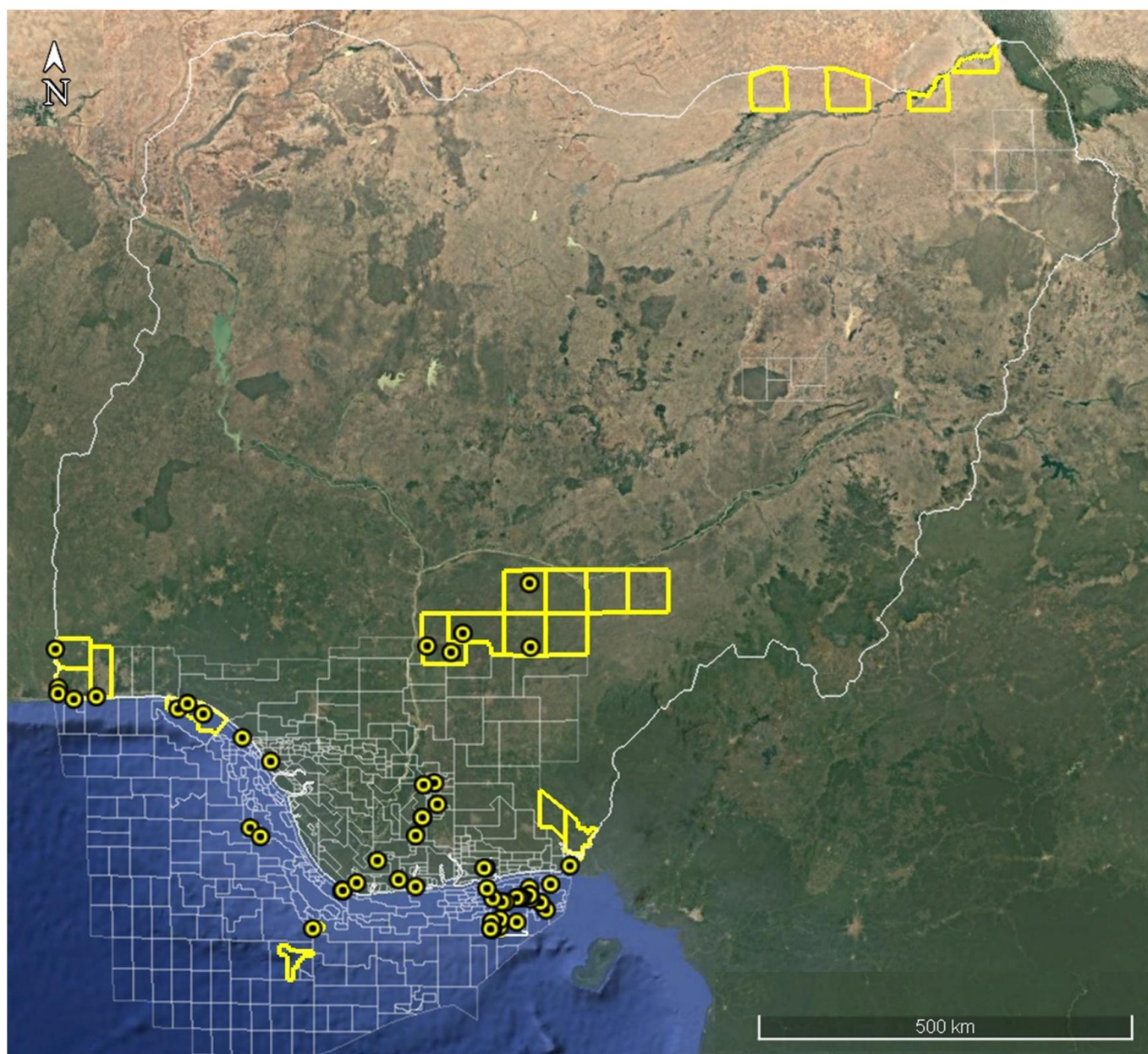
Licensing Round

PPL 2A36

Nigeria 2025 Licensing Round Block Information Table



**NIGERIAN UPSTREAM
PETROLEUM REGULATORY
COMMISSION**



WESTERN NIGER DELTA BLOCKS ON OFFER

Block Name	Block km ² (Approx.)	Data type	Data km ²	Water Depth (m)
PPL 2A33	xx	3D Seismic + Amabilo-1		101
PPL 2A35	xx	3D Seismic + Misty-1		85
PPL 2A36	91	3D Seismic + Olori-1		7
PPL 2A37	xx	3D Seismic + Foniweitoro-1 & South-1		6
Block Name	Block km ²	Data type	Data km ²	Terrain
PPL 2A38	xx	3D Seismic + Idege-1		Onshore Swamp
PPL 2A49	xx	3D Seismic + Bobi-1		Onshore Swamp

For all enquires please contact us at br2025@nuprc.gov.ng

Nigeria 2025 Licensing Round

PPL 2A36



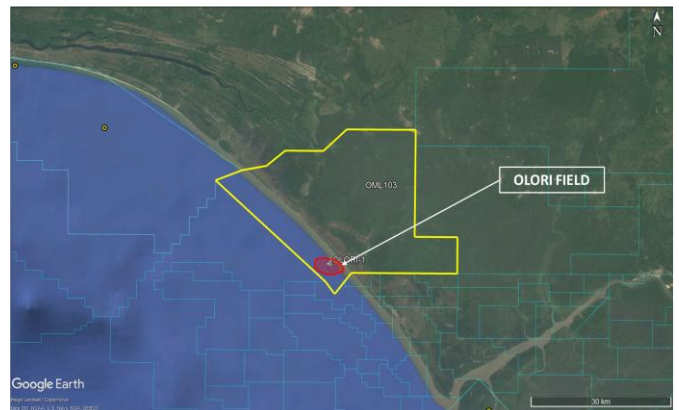
**NIGERIAN UPSTREAM
PETROLEUM REGULATORY
COMMISSION**

PPL 2A36 covers an area excised from OML 103 in accordance with the Petroleum Industry Act (PIA) 2021. PPL 2A36 is situated in a shallow water western offshore Niger Delta in water depth of 7m. Available data include 3D seismic acquired by Conoil in 1996.

The Olori field is located offshore on the continental shelf in water depth of 7m western Niger-Delta sedimentary basin. The closest flowstations Bella field (Conoil)

Olori field was discovered by Conoil through the drilling of the Olori-1 between May 20 and August 1, 2001, to a total depth of 8,225 feet (MD). Olori-1 encountered six heavy oil-bearing sands with a combined hydrocarbon gross pay thickness of 103 feet. The well was subsequently plugged and abandoned.

OML 103 is currently operated by Conoil.





NIGERIAN UPSTREAM PETROLEUM REGULATORY COMMISSION

For all inquiries, please
contact us at

br2025@nuprc.gov.ng