



**NIGERIAN UPSTREAM
PETROLEUM REGULATORY
COMMISSION**

Nigeria 2025

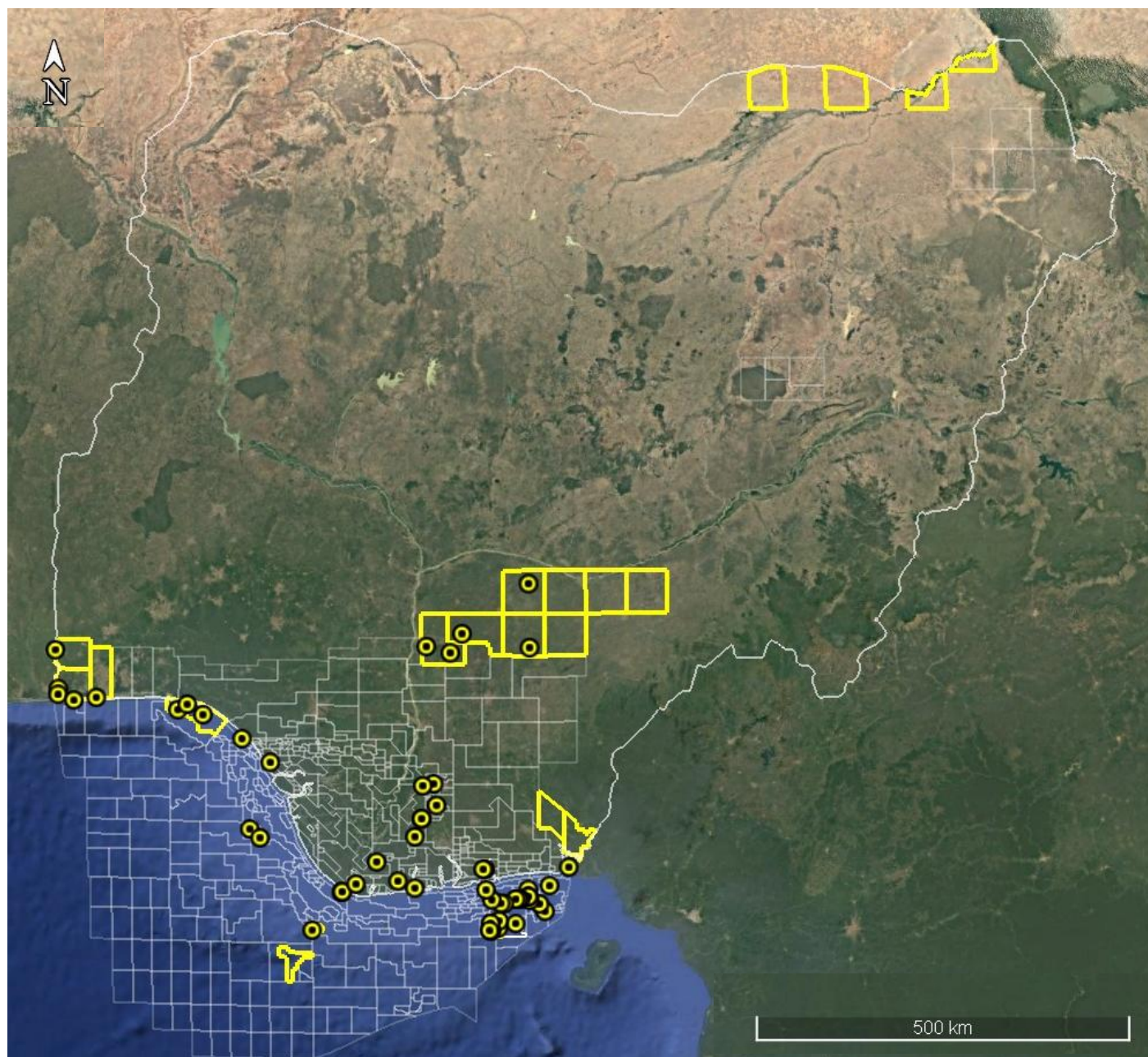
Licensing Round

PPL 307

Nigeria 2025 Licensing Round Block Information Table



**NIGERIAN UPSTREAM
PETROLEUM REGULATORY
COMMISSION**



BENIN BASIN BLOCKS ON OFFER

Block Name	Block km ²	Data type	Data km ²	Terrain
PPL 307	1529	Gravity data		Land
PPL 308	1637	Gravity data + Afowo-1, Aganketin-1, Bodashe-1 & Ilelaw-1		Land
PPL 309	1611	Gravity data + Ojo-1		Land

For all enquires please contact us at br2025@nuprc.gov.ng

Nigeria 2025 Licensing Round

PPL 307

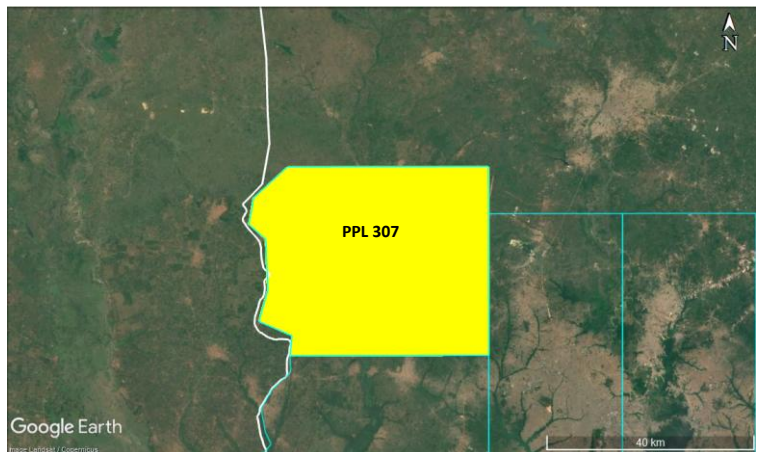
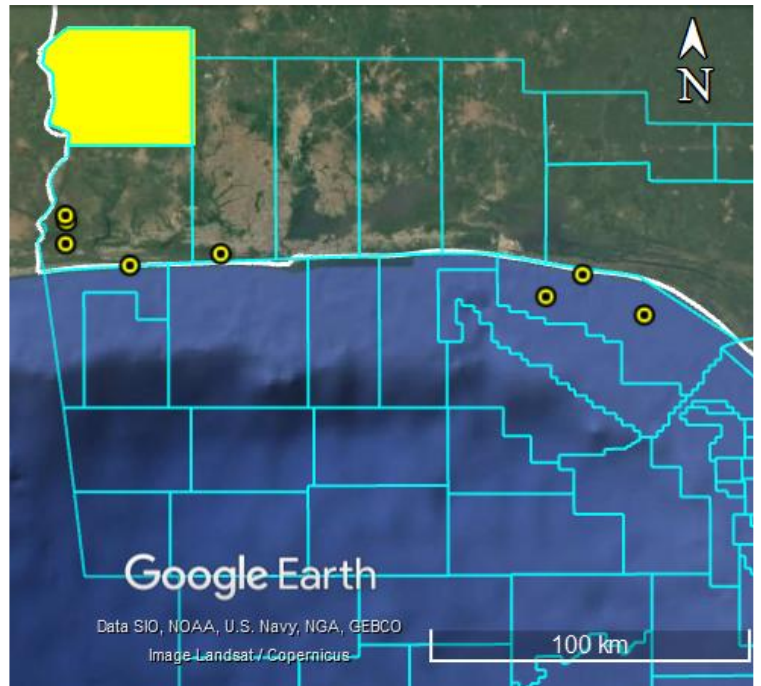


**NIGERIAN UPSTREAM
PETROLEUM REGULATORY
COMMISSION**

PPL-307 covers an area of 1529km² which lies along Nigeria's western boundary with the Republic of Benin, extending across Ogun State. The block occupies a relatively frontier onshore area, with no well drilled in it. The block has some gravity data but no seismic data coverage across the block.

The area falls within the Transform Margin Basin situated in the Benin Basin in onshore Nigeria. Two major petroleum plays are recognized in the Nigerian Transform Margin: the syn-transform Lower Cretaceous and the post-transform Upper Cretaceous. Source rocks evolved from deeper Aptian lacustrine shales to shallower Mid-Albian marginal-marine shales as rifting progressed.

The Upper Cretaceous petroleum system is sourced primarily from Cenomanian–Turonian shales deposited under deep, anoxic marine conditions. Reservoir opportunities are provided by Albian to Santonian shallow- to deep-marine sandstones.





NIGERIAN UPSTREAM PETROLEUM REGULATORY COMMISSION

For all enquires please
contact us at

br2025@nuprc.gov.ng