



**NIGERIAN UPSTREAM
PETROLEUM REGULATORY
COMMISSION**

Nigeria 2025

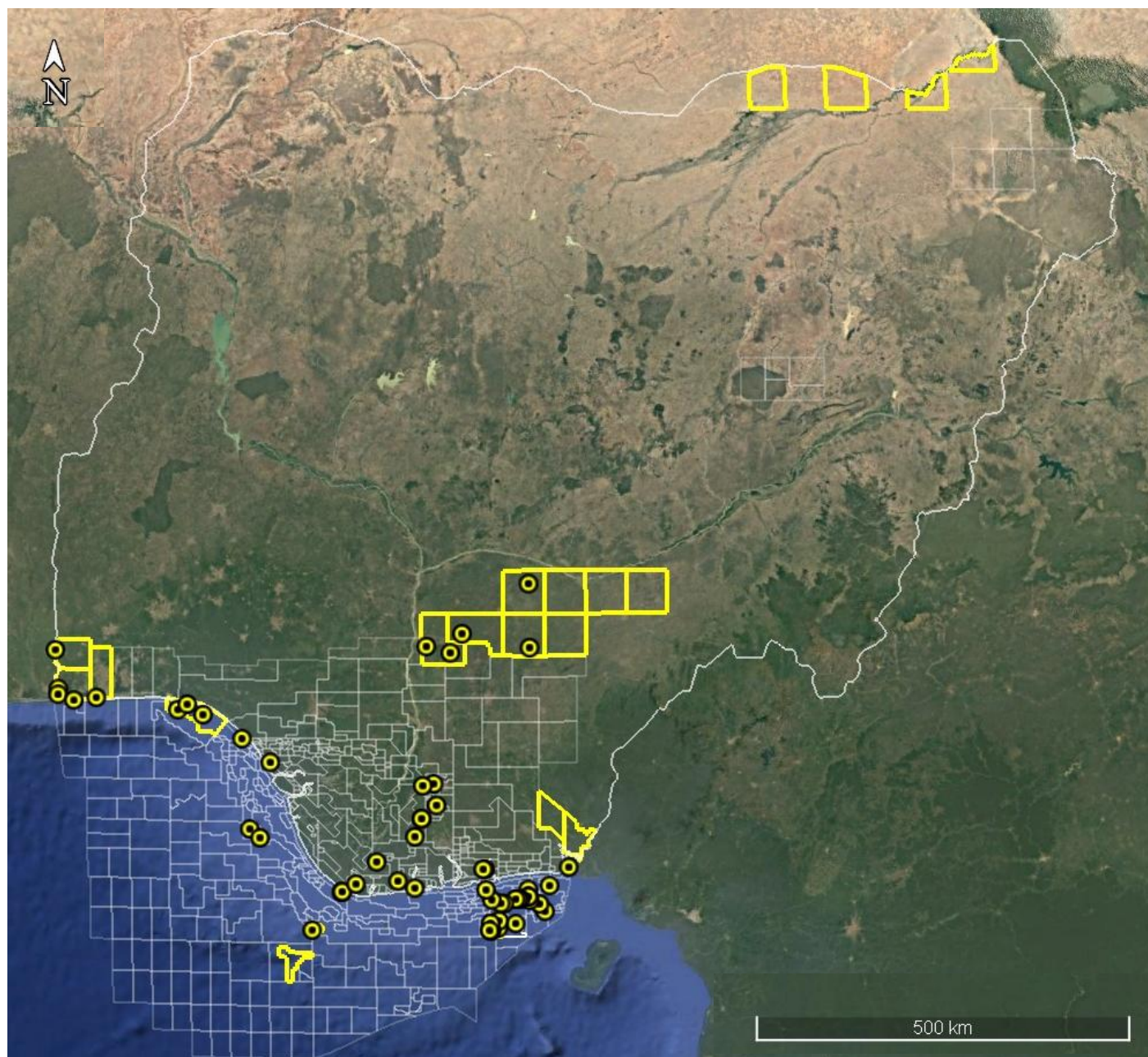
Licensing Round

PPL 308

Nigeria 2025 Licensing Round Block Information Table



**NIGERIAN UPSTREAM
PETROLEUM REGULATORY
COMMISSION**



BENIN BASIN BLOCKS ON OFFER

Block Name	Block km ² (Approx.)	Data type	Data km ²	Terrain
PPL 307	1529	Gravity data		Land
PPL 308	1637	Gravity data + Afowo-1, Aganketin-1, Bodashe-1 & Ilepaw-1		Land
PPL 309	1611	Gravity data + Ojo-1		Land

For all inquiries, please contact us at br2025@nuprc.gov.ng

Nigeria 2025 Licensing Round

PPL 308



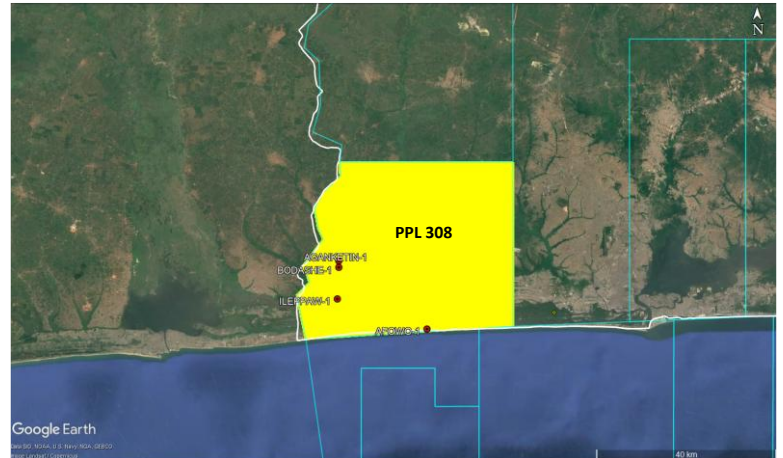
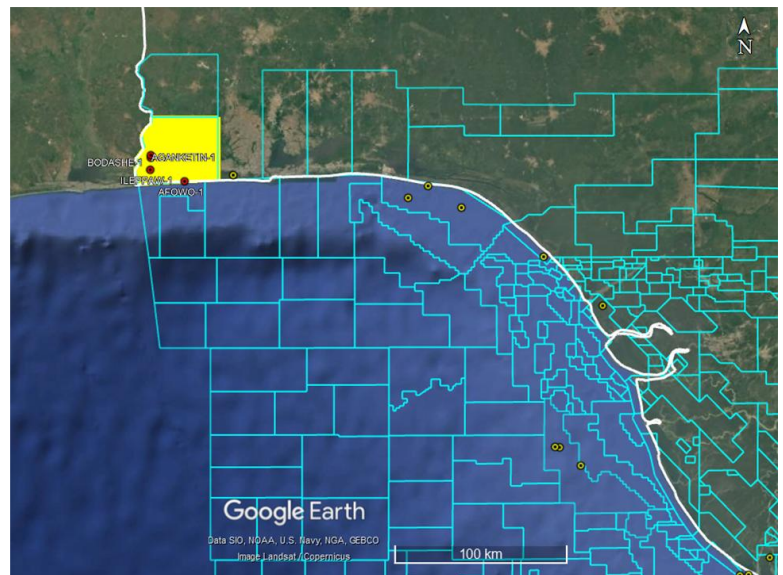
**NIGERIAN UPSTREAM
PETROLEUM REGULATORY
COMMISSION**

The PPL-308 covers an area of 1637km² which lies along Nigeria's western boundary with the Republic of Benin, extending across Lagos and Ogun States. The block occupies a relatively frontier onshore area, with four wells drilled in its southern section. The block has some gravity data but seismic data coverage across the block is unavailable.

Four wells were drilled, three by Mobil (ex-Tenneco) - Afowo-1 in December 1959, Bodashe-1 - January 1960 and Ilepa-1 - December 1960. The total measured depths (MD) for Afowo-1, Bodashe-1 and Ilepa-1 are 7,049 ft, 4,949 ft, and 5,661 ft respectively. Aganketin-1 was drilled in 1993 by Alfred James Petroleum to a total measured depth of 4,800 feet.

The area falls within the Transform Margin Basin situated in the Benin Basin in onshore Nigeria. Two major petroleum plays are recognized in the Nigerian Transform Margin: the syn-transform Lower Cretaceous and the post-transform Upper Cretaceous. Source rocks evolved from deeper Aptian lacustrine shales to shallower Mid-Albian marginal-marine shales as rifting progressed.

The Upper Cretaceous petroleum system is sourced primarily from Cenomanian–Turonian shales deposited under deep, anoxic marine conditions. Reservoir opportunities are provided by Albian to Santonian shallow- to deep-marine sandstones.





NIGERIAN UPSTREAM PETROLEUM REGULATORY COMMISSION

For all inquiries, please
contact us at

br2025@nuprc.gov.ng