



**NIGERIAN UPSTREAM  
PETROLEUM REGULATORY  
COMMISSION**

# **Nigeria 2025**

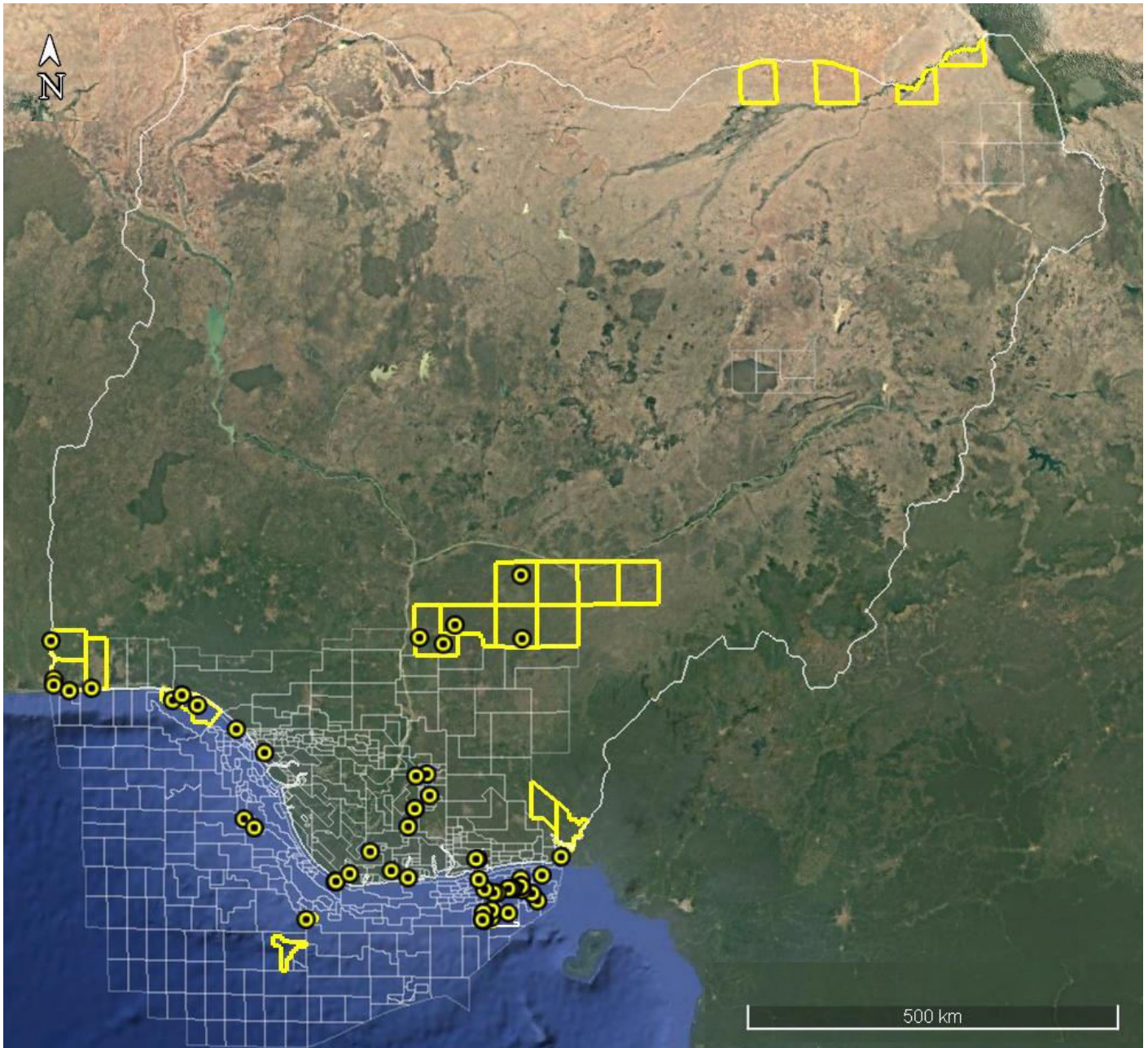
## **Licensing Round**

**PPL 900**

Nigeria 2025 Licensing Round Block  
**Information Table**



**NIGERIAN UPSTREAM  
 PETROLEUM REGULATORY  
 COMMISSION**



**ANAMBRA BASIN BLOCKS ON OFFER**

Block Name	Block km <sup>2</sup> (Approx.)	Data type	Data km	Terrain
<b>PPL 900</b>	<b>1309.09</b>	<b>Atu-1, Alade-1</b>		<b>Land</b>
PPL 901	xxx	Inni-1		Land
PPL 902	xxx	Opiarum-1		Land
PPL 903	xxx			Land

For all enquires please contact us at [br2025@nuprc.gov.ng](mailto:br2025@nuprc.gov.ng)

# Nigeria 2025 Licensing Round

## PPL 900

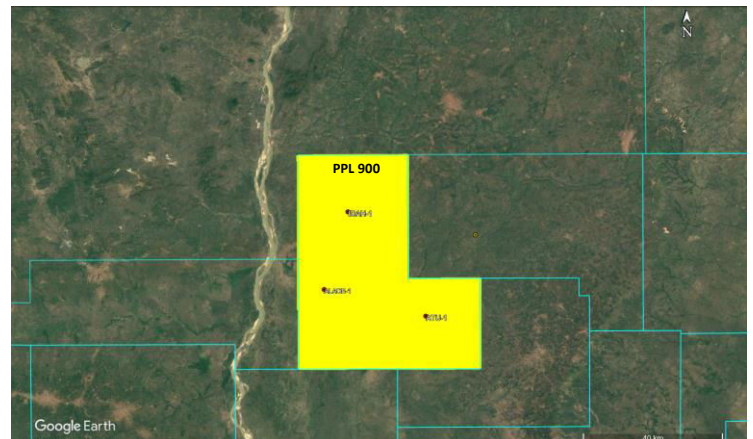
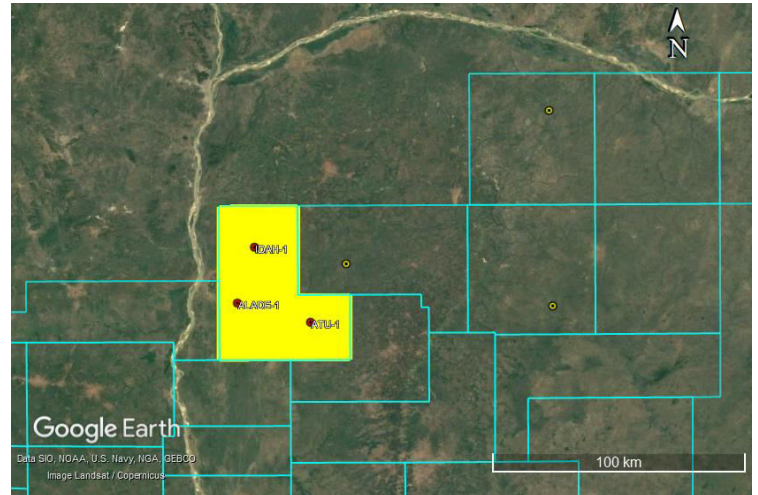


**NIGERIAN UPSTREAM  
PETROLEUM REGULATORY  
COMMISSION**

PPL 900 lies on the Cretaceous Anambra basin. Anambra basin forms the southwestern extension of the Southern Benue Trough and is regarded as the transitional link between the Benue interior rift system and the Niger Delta basin. It occupies a relatively frontier inland with three wells drilled across the block. The most recent seismic data coverage across the block is of early 80s vintage but unavailable.

Three wells were drilled, Elf drilled Alade-1 in May 1967 and Agip drilled Atu-1 in August 1982. The total measured depths (MD) for Alade-1 and Atu-1 are 10,023ft, and 11,818ft respectively.

The primary source rocks are the organic-rich Nkporo/Enugu Shales and the Imo Shale, both containing moderate to high organic carbon and dominated by Type III kerogen, making the system largely gas-prone with minor oil potential. Reservoir units include the well-sorted, high-porosity Ajali Sandstone and the more heterogeneous Nanka Sands, supported by effective regional and local seals such as the Imo Shale and shaly intervals within the Mamu Formation. These combinations make the basin capable of hosting significant accumulations, particularly of natural gas. Hydrocarbon traps within the basin are largely structural anticlines, fault blocks, and compressional closures alongside important stratigraphic traps associated with sand pinch-outs and facies transitions. Migration is believed to have occurred both vertically and laterally from deeper Nkporo kitchens into overlying reservoir units.





# NIGERIAN UPSTREAM PETROLEUM REGULATORY COMMISSION

For all inquiries, please  
contact us at

[br2025@nuprc.gov.ng](mailto:br2025@nuprc.gov.ng)