



**NIGERIAN UPSTREAM
PETROLEUM REGULATORY
COMMISSION**

Nigeria 2025

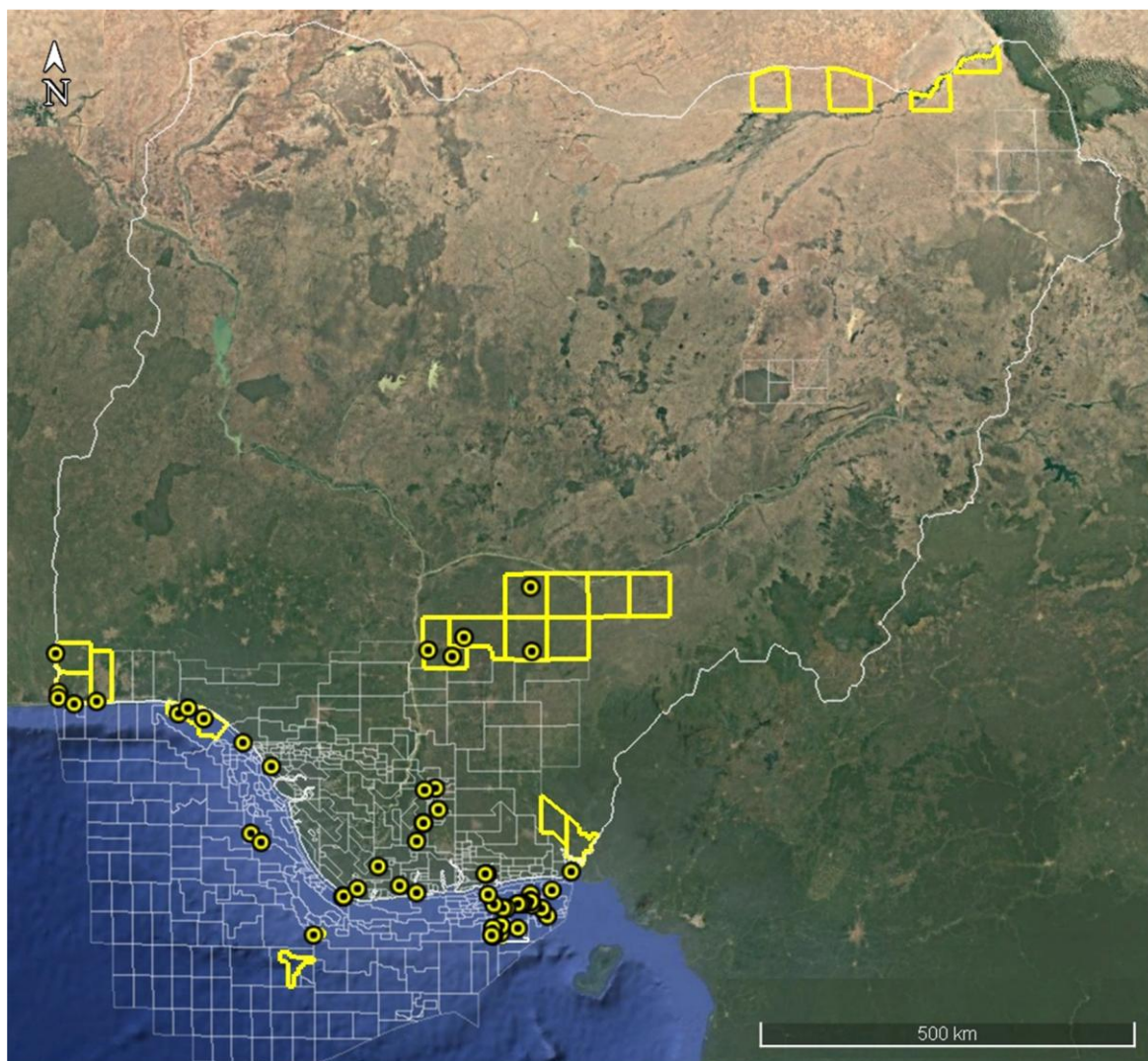
Licensing Round

PPL 2A45

Nigeria 2025 Licensing Round Block Information Table



**NIGERIAN UPSTREAM
PETROLEUM REGULATORY
COMMISSION**



EASTERN OFFSHORE NIGER DELTA BLOCKS ON OFFER

Block Name	Block km ² (approx.)	Data type	Data km ²	Water Depth (m)
PPL 2A31		3D Seismic + Ikuru-1		n/a
PPL 2A34		3D Seismic + Kenam-1		22
PPL 2A39		3D Seismic + Ebet-1		20
PPL 2A40		3D Seismic + Ebiya-1		24
PPL 2A41		3D Seismic + Idiok-1		15
PPL 2A42		3D Seismic + Oyobio-1, Oyobio-1 ST		38
PPL 2A43		3D Seismic + Utai-1, Utai-2, Utai-13		21
PPL 2A44		3D Seismic + Usari East-1, 2		22
PPL 2A45	17	3D Seismic + Obio-1		n/a
PPL 2A52		3D Seismic + Ayama-1, 2		61
PPL 2A53		3D Seismic + LHH-1		n/a
PPL 2A55		3D Seismic + Usiere-1		26.2
PPL 2A56		3D Seismic + Offiong-1		25
PPL 2A57		3D Seismic + Nkanda-1		23

For all enquires please contact us at br2025@nuprc.gov.ng

Nigeria 2025 Licensing Round

PPL 2A45

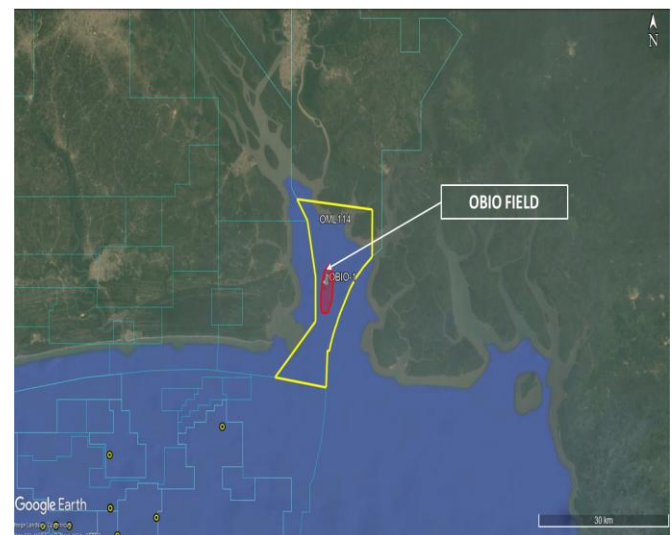
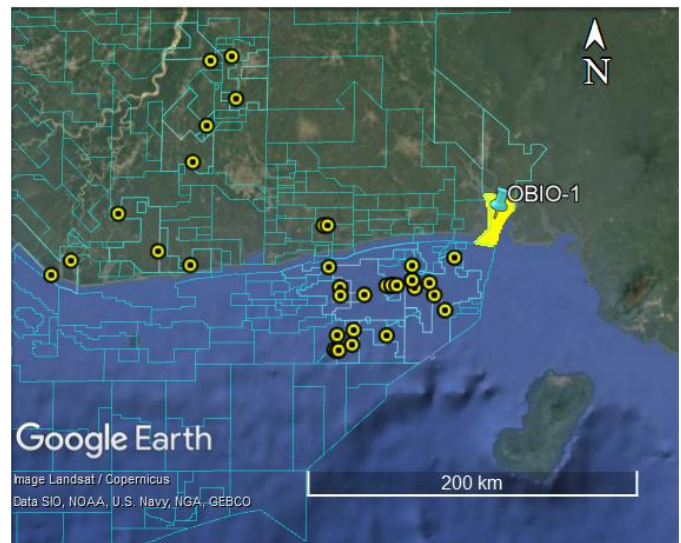


**NIGERIAN UPSTREAM
PETROLEUM REGULATORY
COMMISSION**

PPL 2A45 covers an area excised from OML 114 in accordance with the Petroleum Industry Act (PIA) 2021. PPL 2A45 is situated at the mouth of Calabar River in eastern offshore Niger Delta in 6 metres water depth. The block is covered by 3D seismic data acquired by Monipulo in 2011. OML 114 is currently operated by Monipulo.

The Obio field is located in the Coastal Swamp Depobelt of the eastern Niger Delta sedimentary basin. The closest processing facility is Effiat-Abana Platform (Monipulo).

Obio field was discovered by Monipulo through the drilling of the Obio-1 between March 15 and May 1, 1997, to a total depth of 6,222 feet (MD). Obio-1 encountered three (3) hydrocarbon-bearing sands with a combined estimated net pay of 92 feet. The well was suspended.





NIGERIAN UPSTREAM PETROLEUM REGULATORY COMMISSION

For all enquires please
contact us at

br2025@nuprc.gov.ng