



**NIGERIAN UPSTREAM  
PETROLEUM REGULATORY  
COMMISSION**

# **Nigeria 2025**

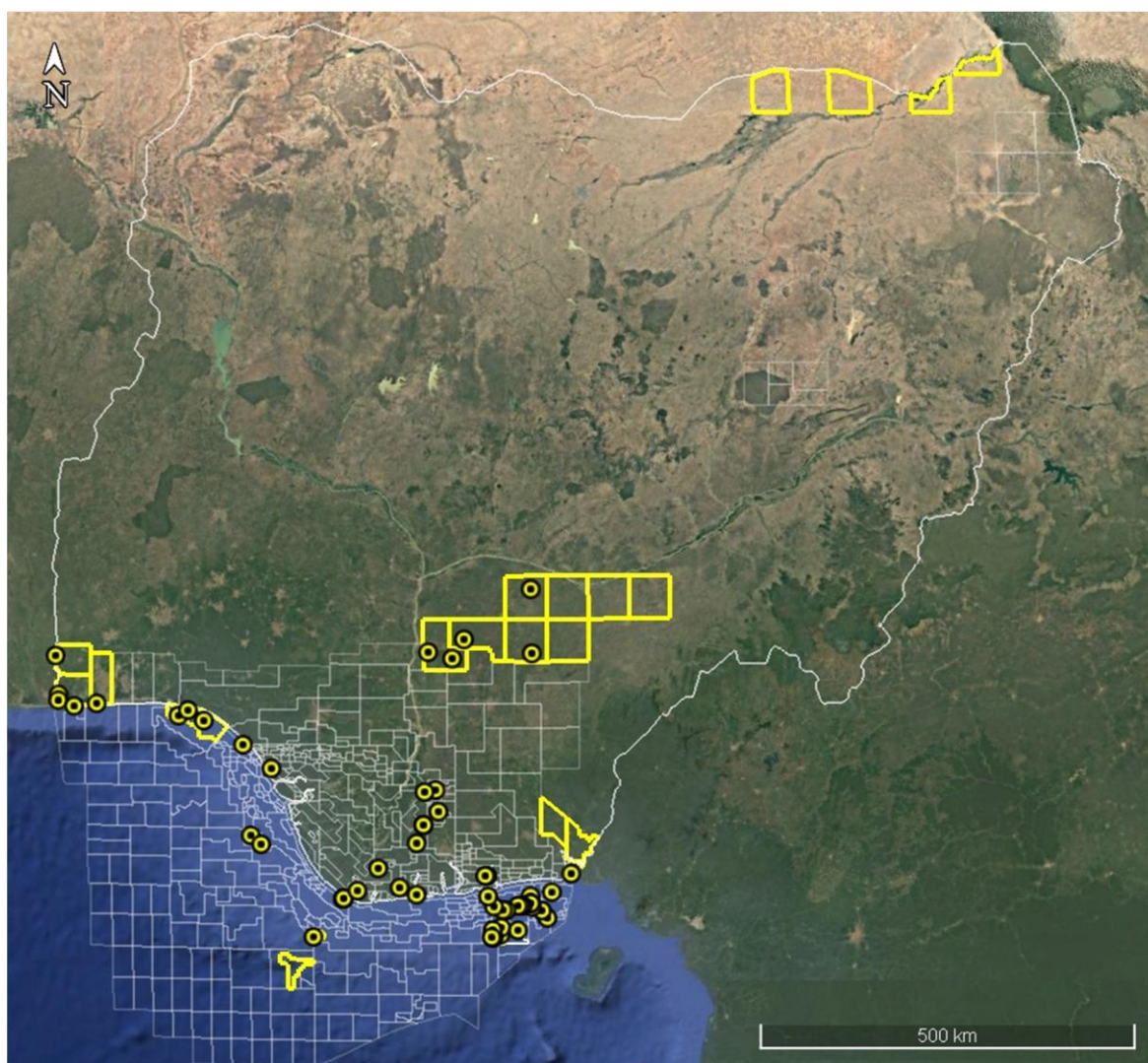
## **Licensing Round**

**PPL 2A39**

# Nigeria 2025 Licensing Round Block Information Table



**NIGERIAN UPSTREAM  
PETROLEUM REGULATORY  
COMMISSION**



**EASTERN OFFSHORE NIGER DELTA BLOCKS ON OFFER**

Block Name	Block km <sup>2</sup> (Approx.)	Data type	Data km <sup>2</sup>	Water Depth (m)
PPL 2A31		3D Seismic + Ikuru-1		n/a
PPL 2A34		3D Seismic + Kenam-1		22
<b>PPL 2A39</b>	<b>10</b>	<b>3D Seismic + Ebet-1</b>		<b>20</b>
PPL 2A40		3D Seismic + Ebiya-1		24
PPL 2A41		3D Seismic + Idiok-1		15
PPL 2A42		3D Seismic + Oyobio-1, Oyobio-1 ST		38
PPL 2A43		3D Seismic + Utai-1, Utai-2, Utai-13		21
PPL 2A44		3D Seismic + Usari East-1, 2		22
PPL 2A45		3D Seismic + Obio-1		n/a
PPL 2A52		3D Seismic + Ayama-1, 2		61
PPL 2A53		3D Seismic + LHH-1		n/a
PPL 2A55		3D Seismic + Usiere-1		26.2
PPL 2A56		3D Seismic + Offiong-1		25
PPL 2A57		3D Seismic + Nkanda-1		23

For all enquires please contact us at [br2025@nuprc.gov.ng](mailto:br2025@nuprc.gov.ng)

## Nigeria 2025 Licensing Round

# PPL 2A39

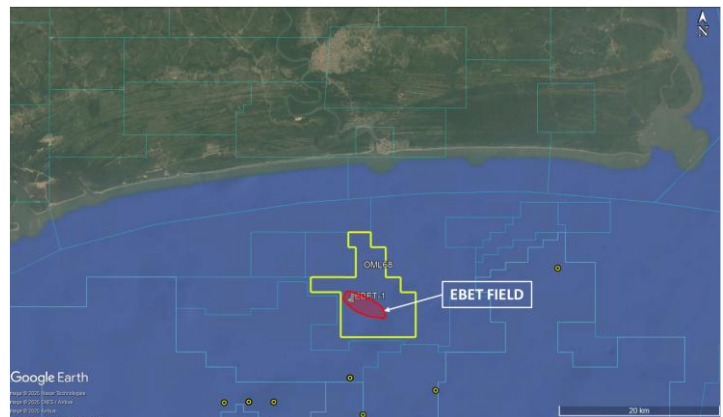
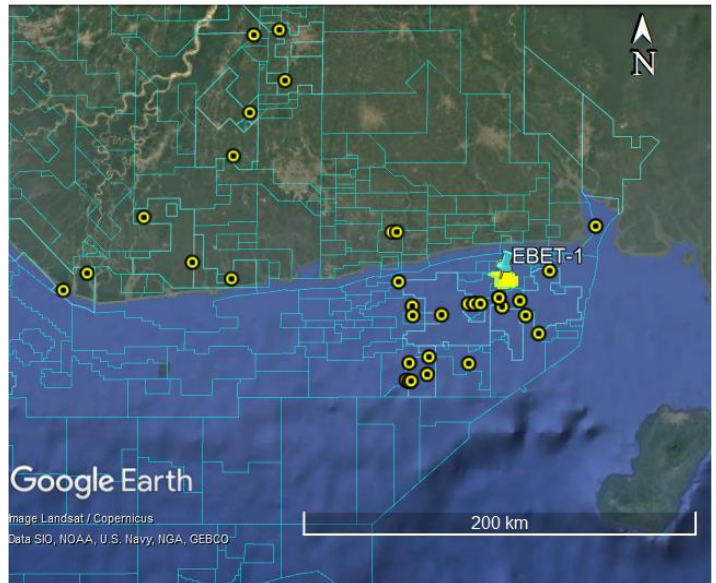


**NIGERIAN UPSTREAM  
PETROLEUM REGULATORY  
COMMISSION**

PPL 2A39 covers an area excised from OML 68 in accordance with the Petroleum Industry Act (PIA) 2021. PPL 2A39 is situated in eastern offshore Niger Delta in 20 metres water depth. The closest processing facility is Idoho Platform (Seplat Energy).

The block is covered by 3D seismic data acquired by ExxonMobil and one well drilled, Ebet-1. The well was drilled by ExxonMobil between January 25 and February 25 2013, to a total depth of 7,651 feet (MD).

The well penetrated a total of 423 feet of oil in four (4) sands. The well was subsequently suspended.





# **NIGERIAN UPSTREAM PETROLEUM REGULATORY COMMISSION**

For all inquiries, please  
contact us at

[br2025@nuprc.gov.ng](mailto:br2025@nuprc.gov.ng)