

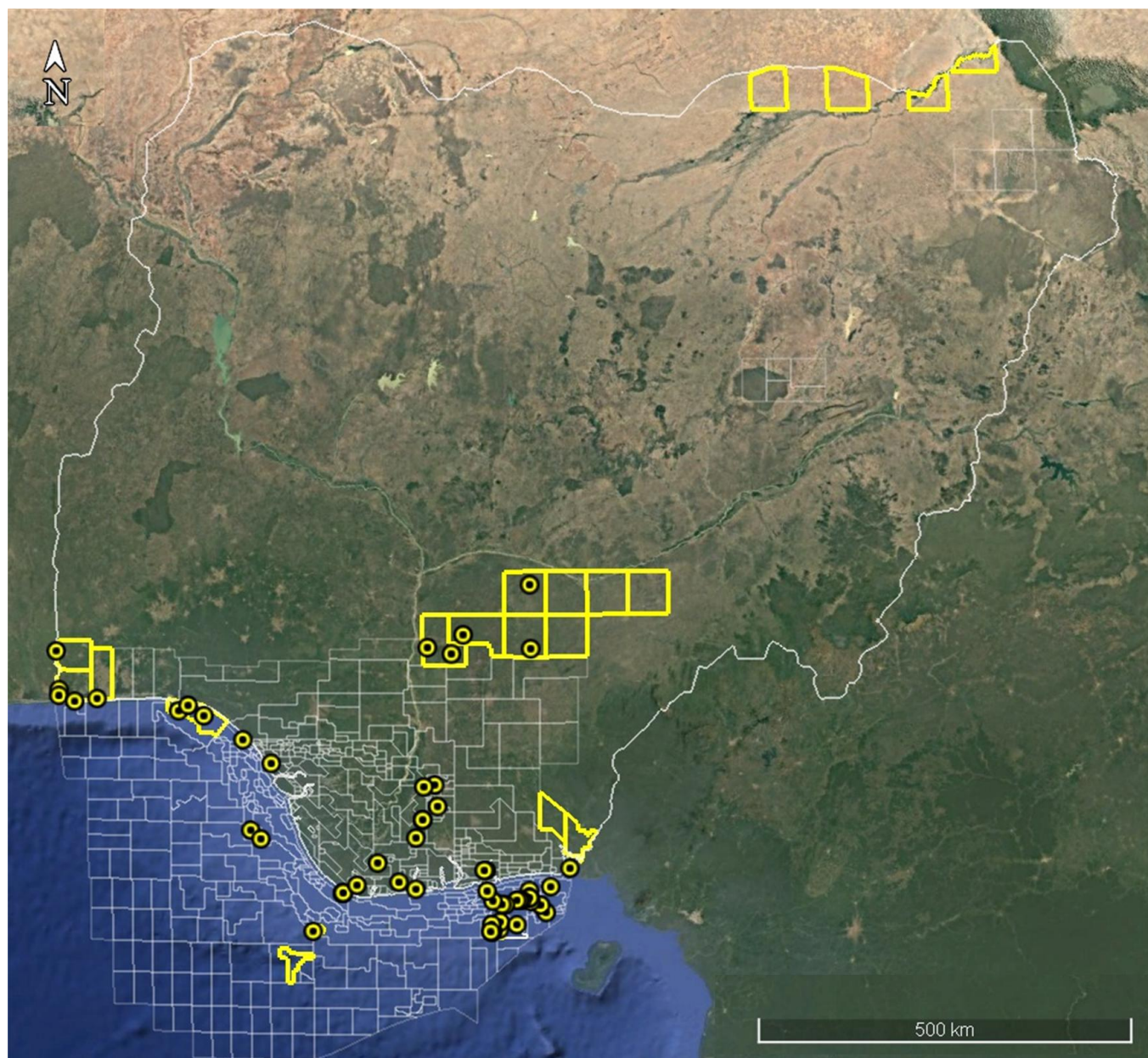


**NIGERIAN UPSTREAM
PETROLEUM REGULATORY
COMMISSION**

Nigeria 2025

Licensing Round

PPL 2A46


EASTERN NIGER DELTA BLOCKS ON OFFER

BOCK NAME	BLOCK KM ² (Approx)	DATA TYPE	DATA KM ²	TERRAIN
PPL 2A29	xx	3D Seismic + Okoroma-1	XX	Onshore
PPL 2A30	xx	3D Seismic +Twoni-1	XX	Onshore
PPL 2A32	xx	3D Seismic +Yorla South-1 & 2	XX	Onshore
PPL 2A38	xx	Idege-1	XX	Onshore
PPL 2A46	25	3D Seismic + Amara-1	XX	Onshore
PPL 2A47	xx	3D Seismic + Anuri-1	XX	Onshore
PPL 2A48	xx	3D Seismic + Akiapiri-1	XX	Onshore
PPL 2A50	xx	3D Seismic + Ndele-1	XX	Onshore
PPL 2A51	xx	3D Seismic + Oforola-1	XX	Onshore
PPL 2A54	xx	3D Seismic + Umudioga-1	XX	Onshore

For all enquires please contact us at br2025@nuprc.gov.ng

Nigeria 2025 Licensing Round

PPL 2A46

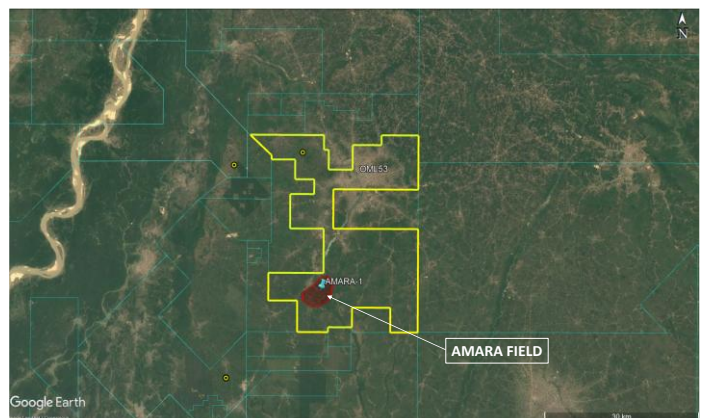
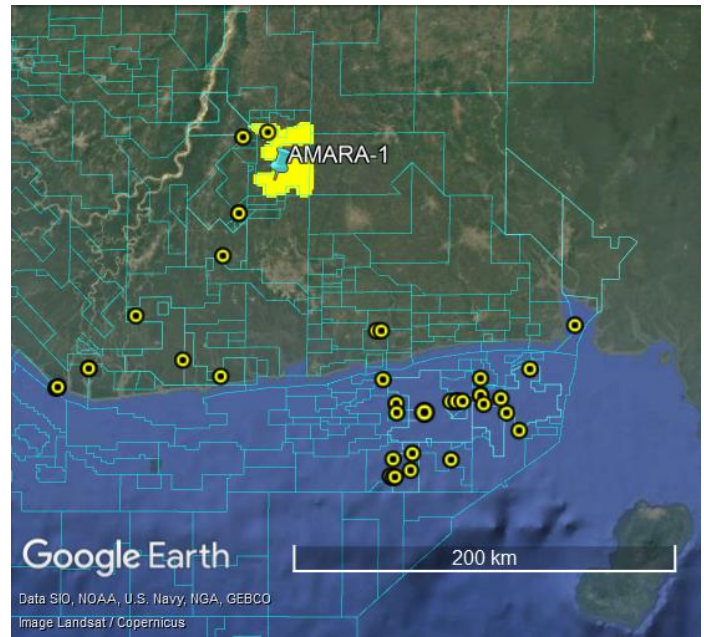


**NIGERIAN UPSTREAM
PETROLEUM REGULATORY
COMMISSION**

PPL 2A46 covers an area excised from OML 53 in accordance with the Petroleum Industry Act (PIA) 2021. PPL 2A46 is situated onshore land terrain in the eastern NigerDelta.

Available data include 3D seismic and one well - Amara-1 which was drilled by Chevron between January 13 and January 31, 2000 to a total depth of 7,766 feet (MD). The well penetrated three (3) oil-bearing sands totalling 448 feet gross pay. Amara-1 was subsequently plugged and abandoned.

OML 53 is currently operated by Seplat Energy





NIGERIAN UPSTREAM PETROLEUM REGULATORY COMMISSION

For all enquires please
contact us at

br2025@nuprc.gov.ng