

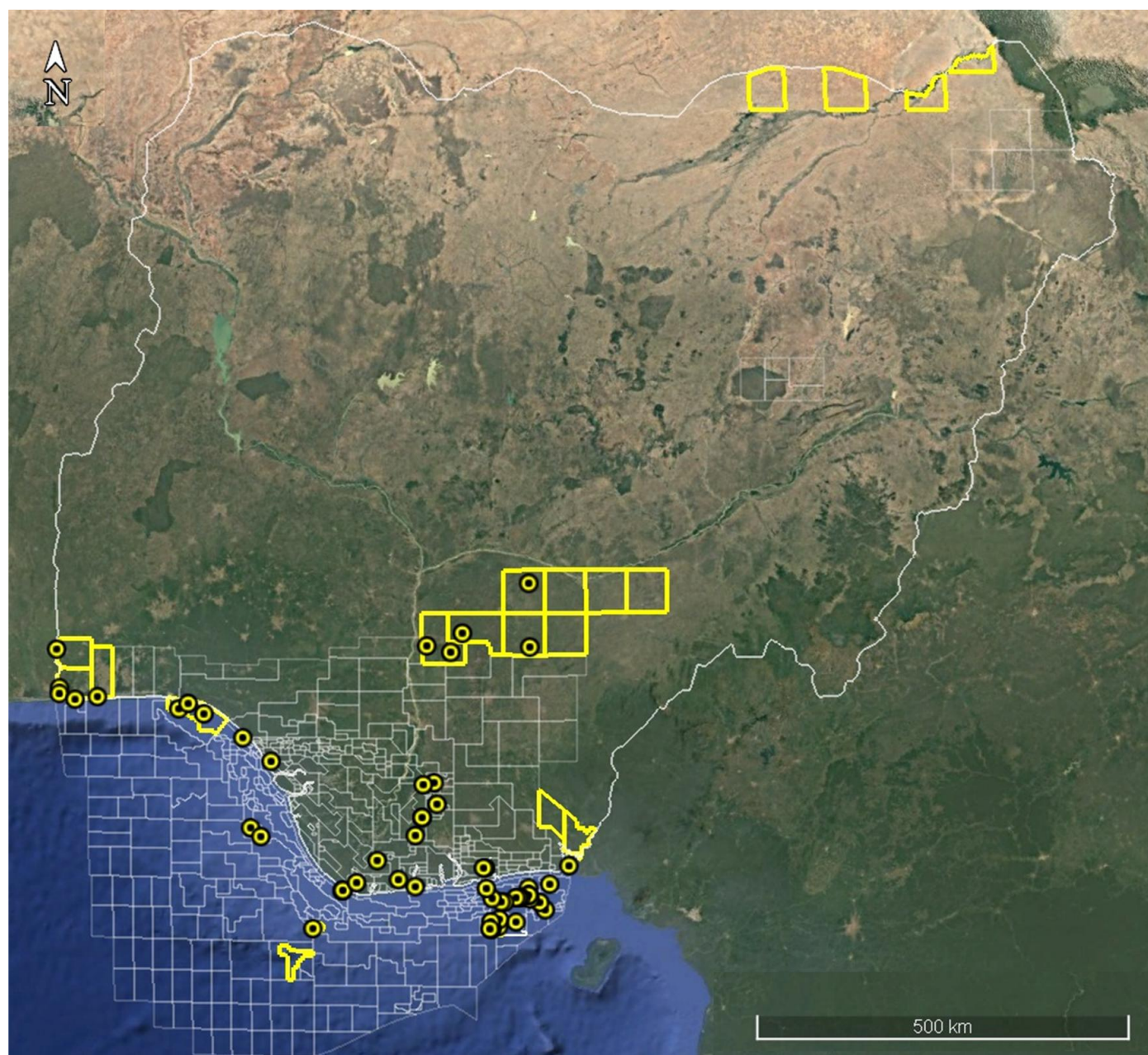


**NIGERIAN UPSTREAM  
PETROLEUM REGULATORY  
COMMISSION**

# **Nigeria 2025**

## **Licensing Round**

**PPL 2A38**


**WESTERN NIGER DELTA BLOCKS ON OFFER**

| Block Name      | Block km <sup>2</sup><br>(Approx.) | Data type                            | Data km <sup>2</sup> | Water Depth (m)      |
|-----------------|------------------------------------|--------------------------------------|----------------------|----------------------|
| PPL 2A33        | xx                                 | 3D Seismic + Amabilo-1               |                      | 101                  |
| PPL 2A35        | xx                                 | 3D Seismic + Misty-1                 |                      | 85                   |
| PPL 2A36        | xx                                 | 3D Seismic + Olori-1                 |                      | 7                    |
| PPL 2A37        | xx                                 | 3D Seismic + Foniweitoro-1 & South-1 |                      | 6                    |
|                 |                                    |                                      |                      |                      |
| Block Name      | Block km <sup>2</sup>              | Data type                            | Data km <sup>2</sup> | Terrain              |
| <b>PPL 2A38</b> | <b>65</b>                          | <b>3D Seismic + Idege-1</b>          |                      | <b>Onshore Swamp</b> |
| PPL 2A49        | xx                                 | 3D Seismic + Bobi-1                  |                      | Onshore Swamp        |

## Nigeria 2025 Licensing Round

# PPL 2A38



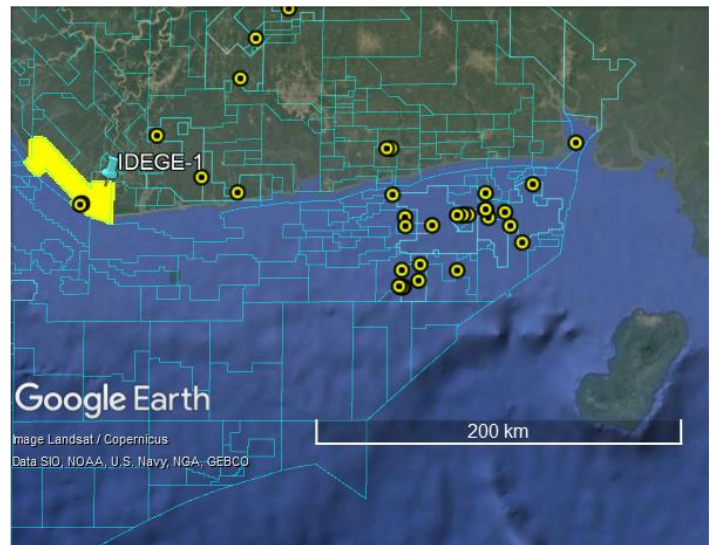
**NIGERIAN UPSTREAM  
PETROLEUM REGULATORY  
COMMISSION**

PPL 2A38 covers an area excised from OML 59 in accordance with the Petroleum Industry Act (PIA) 2021. PPL 2A38 is situated in western Niger Delta. The block is covered by 3D seismic data acquired by Conoil in 2006.

The Idege field is in the northern edge of OML 59 which is situated in the Coastal Swamp-2 Depobelt onshore swamp terrain, western Niger Delta sedimentary basin.

Idege was drilled by Conoil through the drilling of the Idege-1 on July 5, 2006, to a total depth of 11,027 feet (MD) The well is currently plugged and abandoned.

OML 59 is currently operated by Conoil.





# **NIGERIAN UPSTREAM PETROLEUM REGULATORY COMMISSION**

For all inquiries, please  
contact us at

[br2025@nuprc.gov.ng](mailto:br2025@nuprc.gov.ng)