



**NIGERIAN UPSTREAM
PETROLEUM REGULATORY
COMMISSION**

Nigeria 2025

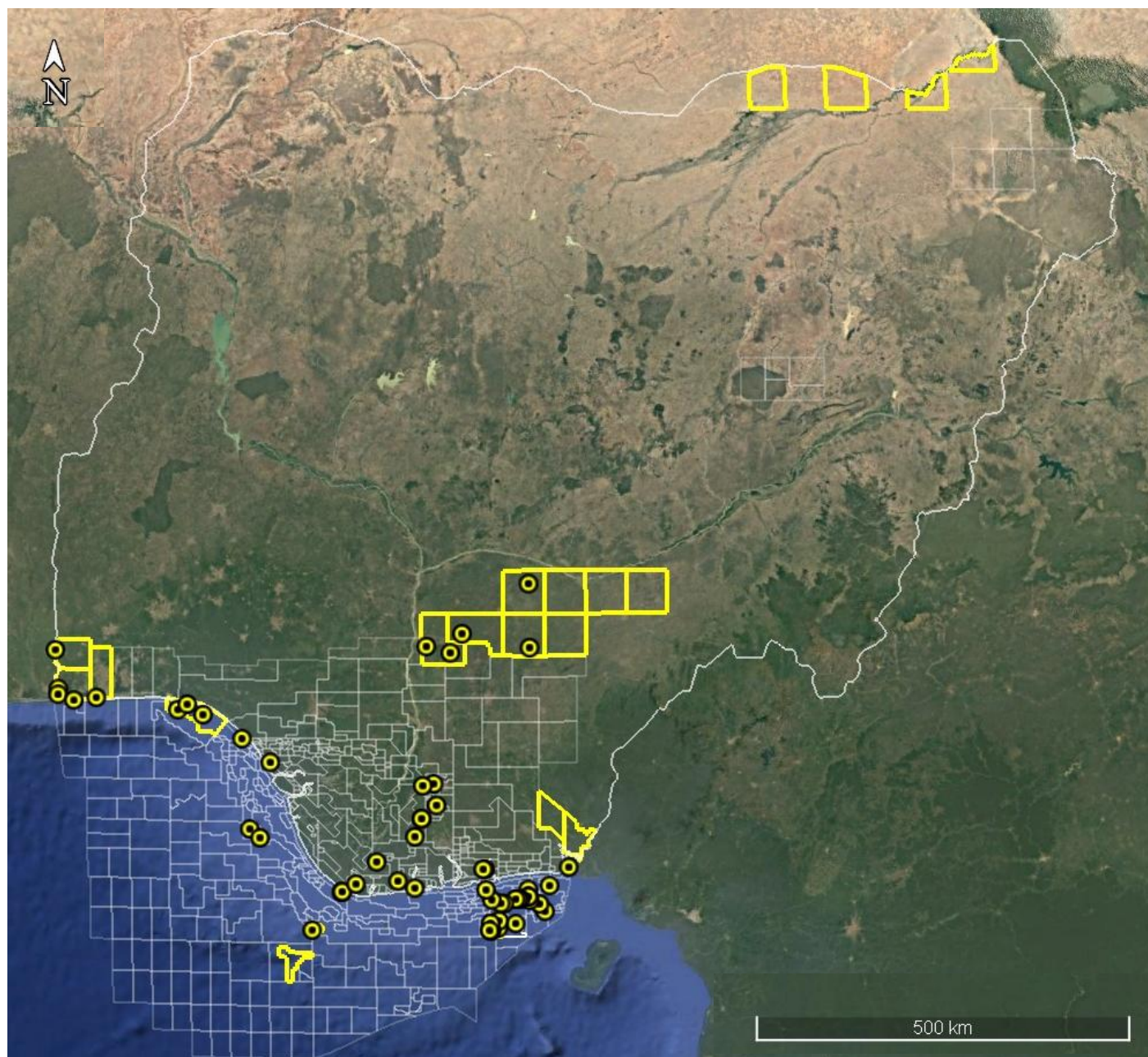
Licensing Round

PPL 2A58

Nigeria 2025 Licensing Round Block Information Table



**NIGERIAN UPSTREAM
PETROLEUM REGULATORY
COMMISSION**



NIGER DELTA BASIN OFFSHORE BLOCKS ON OFFER

Block Name	Block km ² (Approx)	Data type	Data km ²	Water Depth (m)
PPL 2A58	170	3D Seismic + Lobia-1	172.8	60-200
PPL 2A60	342.0	3D Seismic + Ediye-1 & 2, Enin-1, LOO-1, Obufa-1 & 2, Utip-1		60 - 105
PPL 2010	644.6	3D Seismic		300-700

For all enquires please contact us at br2025@nuprc.gov.ng

Nigeria 2025 Licensing Round

PPL 2A58

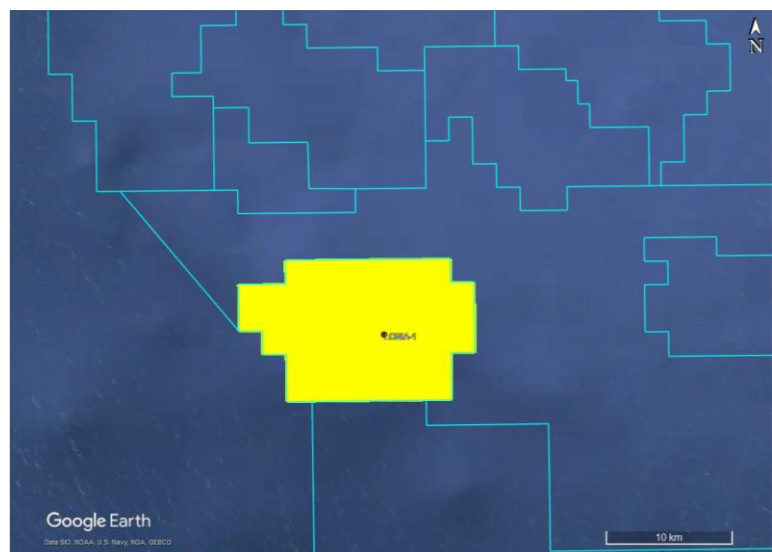
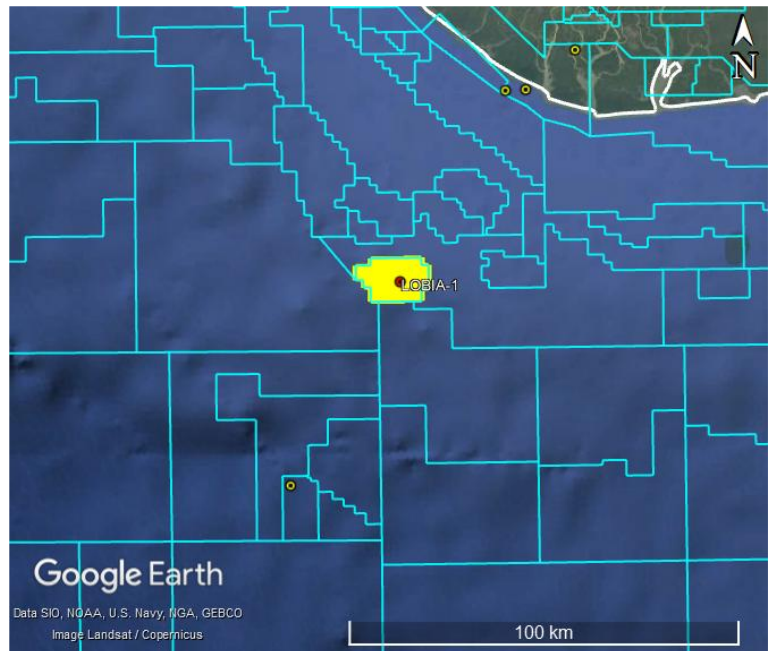


**NIGERIAN UPSTREAM
PETROLEUM REGULATORY
COMMISSION**

Block PPL-2A58 covers an area of 170 km² and is situated in the outer limit of the continental shelf with water depth ranging between 60 to 200 metres. The block has 3D data coverage acquired by former Texaco now Chevron in 1996.

The block is situated in the intersection point of the western and eastern central part offshore Niger-Delta sedimentary basin. The block is 30km west of the NNPC/First E&P's Anyala Field. The block (previously operated as OML 84 by Texaco, later renamed OPL 288) was operated by Chevron Nigeria Limited. In line with the Petroleum Industry Act of 2021, the block has been converted to Petroleum Prospecting Licenses (PPL) 2A58.

The Lobia-1 was drilled by Texaco between November 11 and December 11, 1972, to a total depth of 5,878 feet (MD). The well, drilled off structure was based on 2D seismic data interpretation, encountered oil shows and was subsequently sidetracked. The risked 2U prospective resource is estimated as 50 MMBO.





NIGERIAN UPSTREAM PETROLEUM REGULATORY COMMISSION

For all inquiries, please
contact us at

br2025@nuprc.gov.ng