



**NIGERIAN UPSTREAM  
PETROLEUM REGULATORY  
COMMISSION**

# **Nigeria 2025**

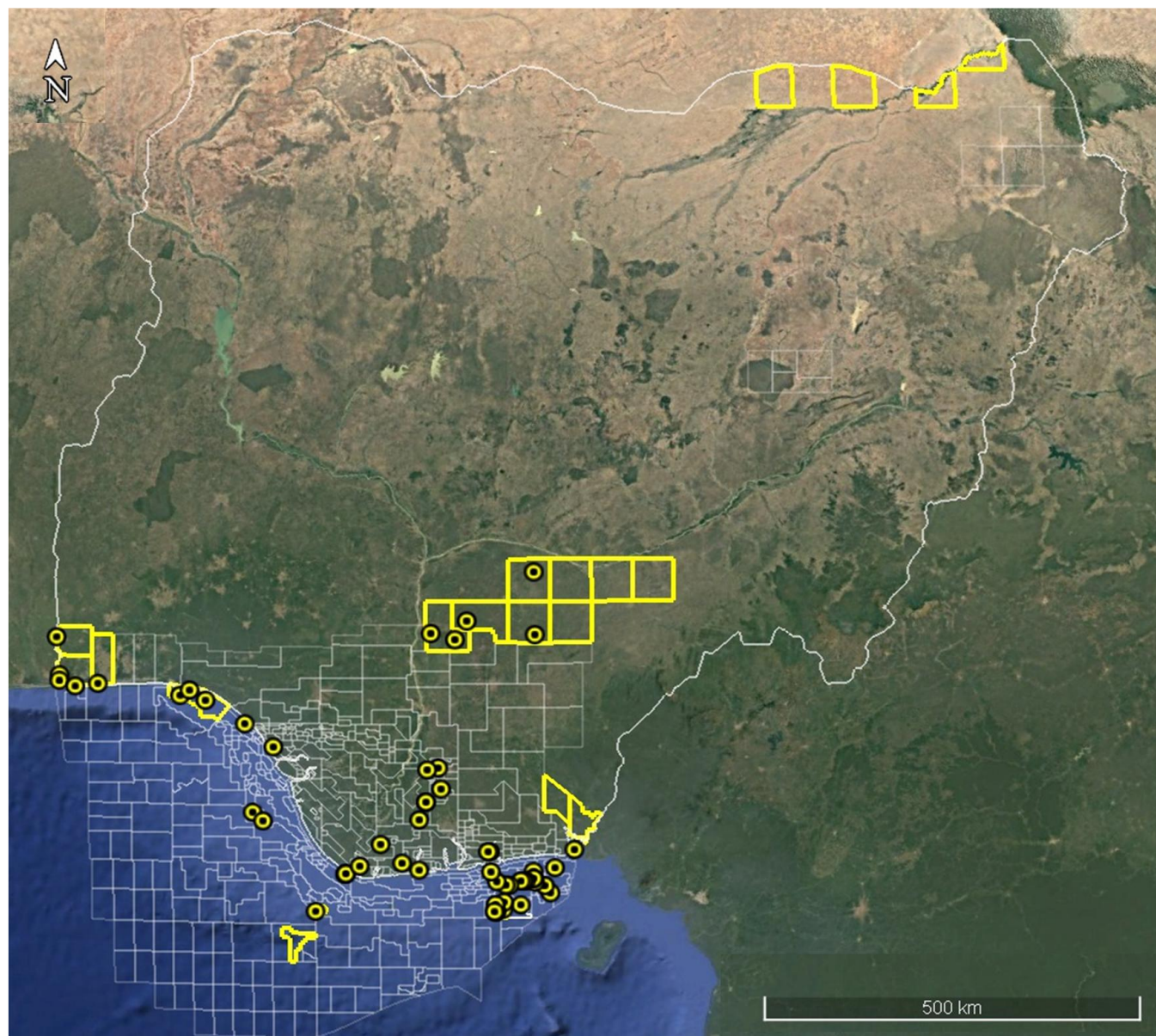
## **Licensing Round**

### **PPL 2A35**

# Nigeria 2025 Licensing Round Block Information Table



**NIGERIAN UPSTREAM  
PETROLEUM REGULATORY  
COMMISSION**



**WESTERN NIGER DELTA BLOCKS ON OFFER**

Block Name	Block km <sup>2</sup> (Approx.)	Data type	Data km <sup>2</sup>	Water Depth (m)
PPL 2A33	xx	3D Seismic + Amabilo-1		101
<b>PPL 2A35</b>	<b>69</b>	<b>3D Seismic + Misty-1</b>		<b>85</b>
PPL 2A36	xx	3D Seismic + Olori-1		7
PPL 2A37	xx	3D Seismic + Foniweitoro-1 & South-1		6
Block Name	Block km <sup>2</sup>	Data type	Data km <sup>2</sup>	Terrain
PPL 2A38	xx	3D Seismic + Idege-1		Onshore Swamp
PPL 2A49	xx	3D Seismic + Bobi-1		Onshore Swamp

For all enquires please contact us at [br2025@nuprc.gov.ng](mailto:br2025@nuprc.gov.ng)

## Nigeria 2025 Licensing Round

# PPL 2A35

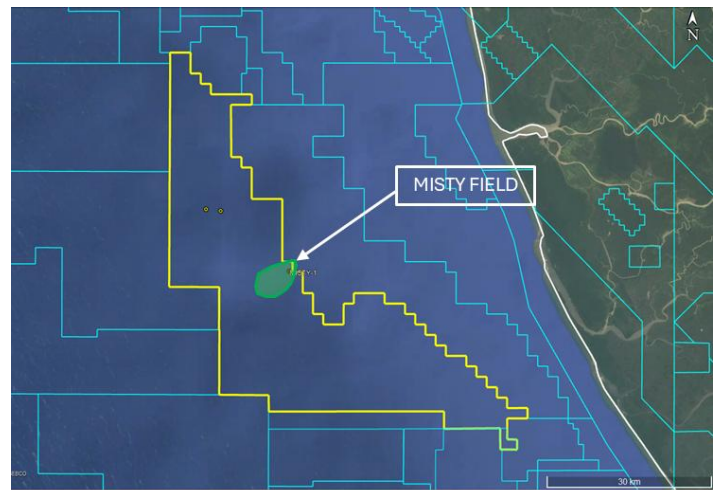
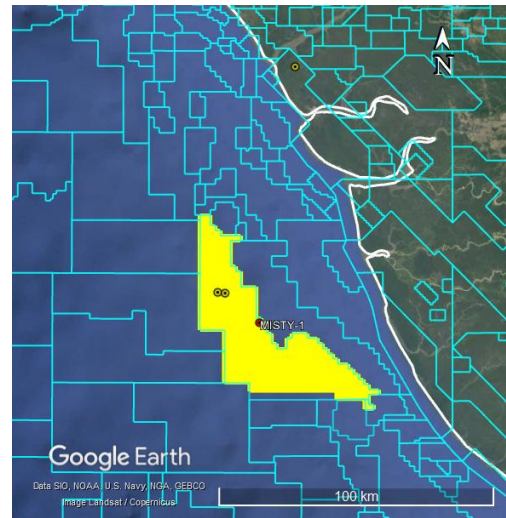


**NIGERIAN UPSTREAM  
PETROLEUM REGULATORY  
COMMISSION**

PPL 2A35 covers an area excised from OML 136 in accordance with the Petroleum Industry Act (PIA) 2021. PPL 2A35 is situated shallow offshore western Niger Delta sedimentary basin. The block is about 55km west of the mouth of Forcados River.

Available data include 3D seismic and one well – Misty-1 was drilled in water depth of 85m by Conoil between July 10 and November 1, 2000, to a total depth of 16,506 feet (MD). The well was drilled off structure and subsequently plugged and abandoned.

OML 136 is currently operated by Conoil.





# **NIGERIAN UPSTREAM PETROLEUM REGULATORY COMMISSION**

For all enquires please  
contact us at

[br2025@nuprc.gov.ng](mailto:br2025@nuprc.gov.ng)