



**NIGERIAN UPSTREAM  
PETROLEUM REGULATORY  
COMMISSION**

# **Nigeria 2025**

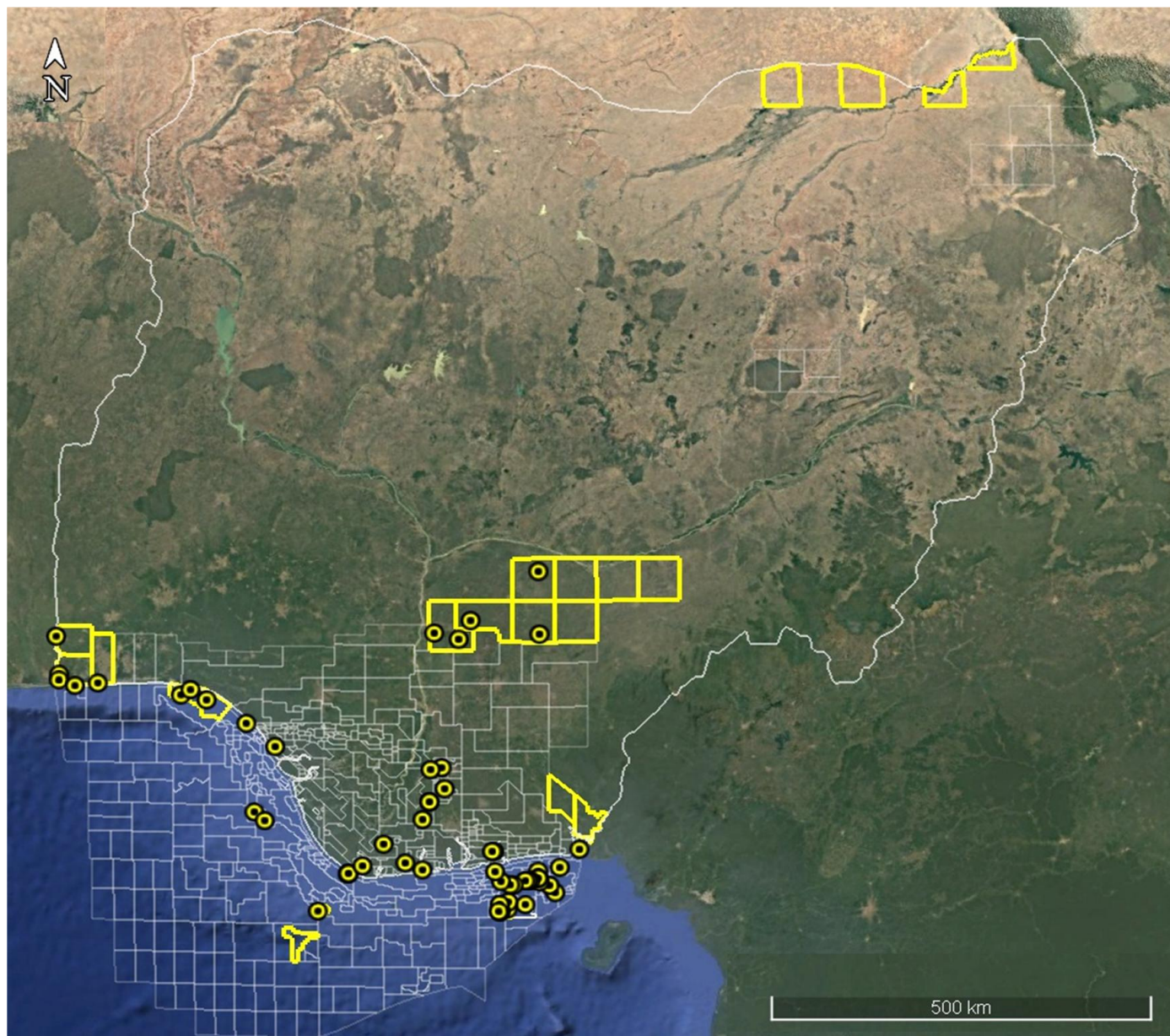
## **Licensing Round**

**PPL 2A33**

# Nigeria 2025 Licensing Round Block Information Table



**NIGERIAN UPSTREAM  
PETROLEUM REGULATORY  
COMMISSION**



## WESTERN NIGER DELTA BLOCKS ON OFFER

Block Name	Block km <sup>2</sup> (Approx.)	Data type	Data km <sup>2</sup>	Water Depth (m)
<b>PPL 2A33</b>	<b>85</b>	<b>3D Seismic + Amabilo-1 &amp; Ene-1</b>		<b>101</b>
PPL 2A35	xx	3D Seismic + Misty-1		85
PPL 2A36	xx	3D Seismic + Olori-1		7
PPL 2A37	xx	3D Seismic + Foniweitoro-1 & South-1		6
Block Name	Block km <sup>2</sup>	Data type	Data km <sup>2</sup>	Terrain
PPL 2A38	xx	3D Seismic + Idege-1		Onshore Swamp
PPL 2A49	xx	3D Seismic + Bobi-1		Onshore Swamp

For all enquires please contact us at [br2025@nuprc.gov.ng](mailto:br2025@nuprc.gov.ng)

# Nigeria 2025 Licensing Round

## PPL 2A33



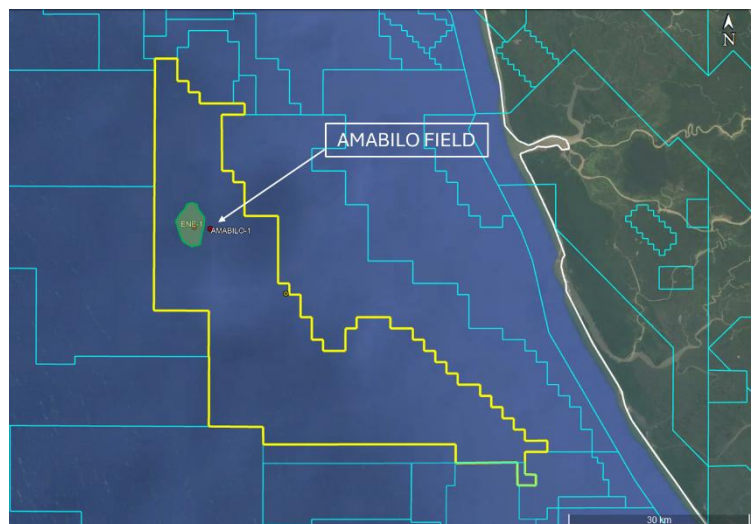
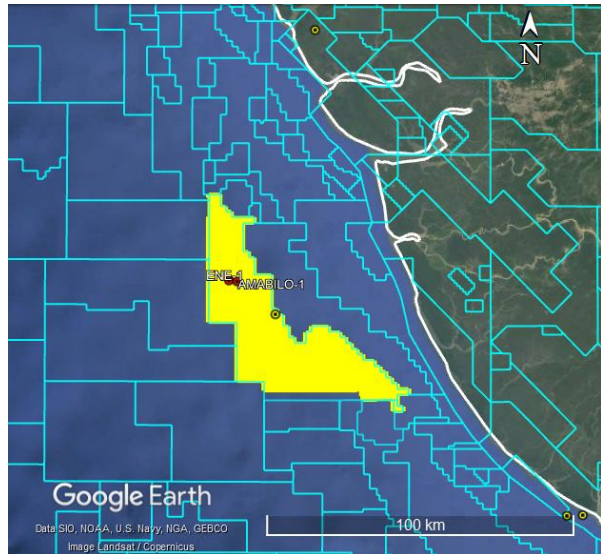
**NIGERIAN UPSTREAM  
PETROLEUM REGULATORY  
COMMISSION**

PPL 2A33 covers an area excised from OML 136 in accordance with the Petroleum Industry Act (PIA) 2021. PPL 2A33 is situated shallow offshore western Niger Delta sedimentary basin. The block is about 55 kilometres west of the mouth of Forcados River.

Available data include 3D seismic acquired by Conoil and two wells drilled - Amabilo-1 drilled in water depth of 331 feet by Deminex between May 6 and June 6, 1974, to a total depth of 9,439 feet (MD). The well is dry.

Ene-1 was successfully drilled by TotalEnergies (ex-Elf Petroleum) from October 9 to December 26, 1980, in 344 feet of water. The well penetrated a total of 236 feet of gas in five (5) sands. Ene-1 was subsequently plugged and abandoned.

OML 136 is currently operated by Conoil.





# **NIGERIAN UPSTREAM PETROLEUM REGULATORY COMMISSION**

For all inquiries, please  
contact us at

[br2025@nuprc.gov.ng](mailto:br2025@nuprc.gov.ng)