



**NIGERIAN UPSTREAM
PETROLEUM REGULATORY
COMMISSION**

Nigeria 2025

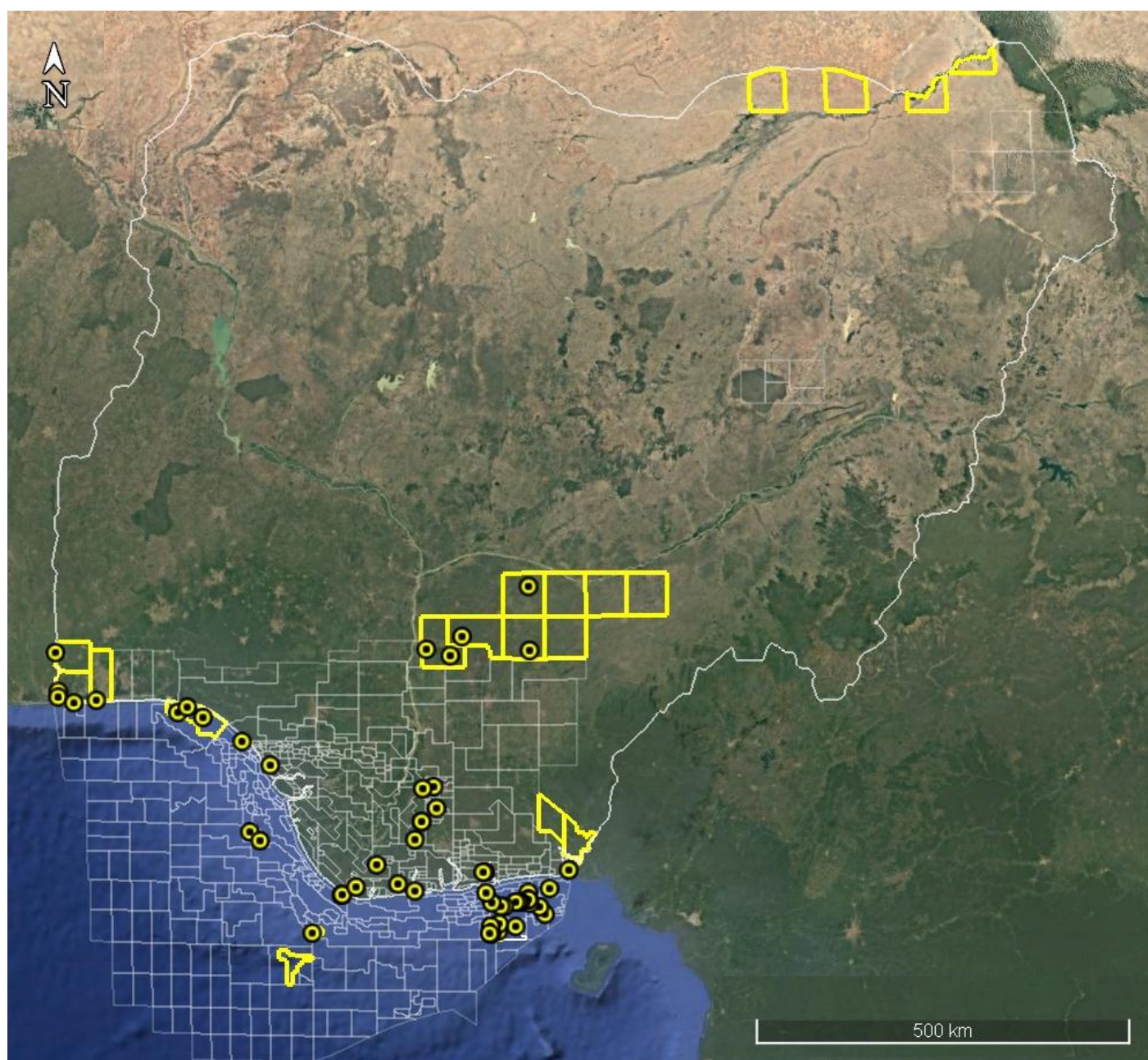
Licensing Round

PPL 700

Nigeria 2025 Licensing Round Block Information Table



**NIGERIAN UPSTREAM
PETROLEUM REGULATORY
COMMISSION**



CHAD BASIN BLOCKS ON OFFER

Block Name	Block km ² (Approx)	Data type	Data km	Terrain
PPL 700	992.6	2D Seismic data		Land
PPL 701	2058.4	2D Seismic data		Land
PPL 702	2338.5	2D Seismic data		Land
PPL 703	1326.0	2D Seismic data		Land

For all enquires please contact us at br2025@nuprc.gov.ng

Nigeria 2025 Licensing Round

PPL 700



**NIGERIAN UPSTREAM
PETROLEUM REGULATORY
COMMISSION**

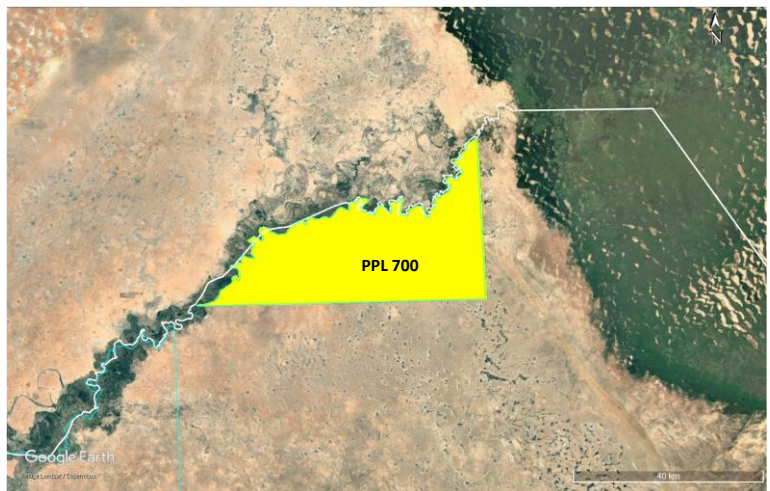
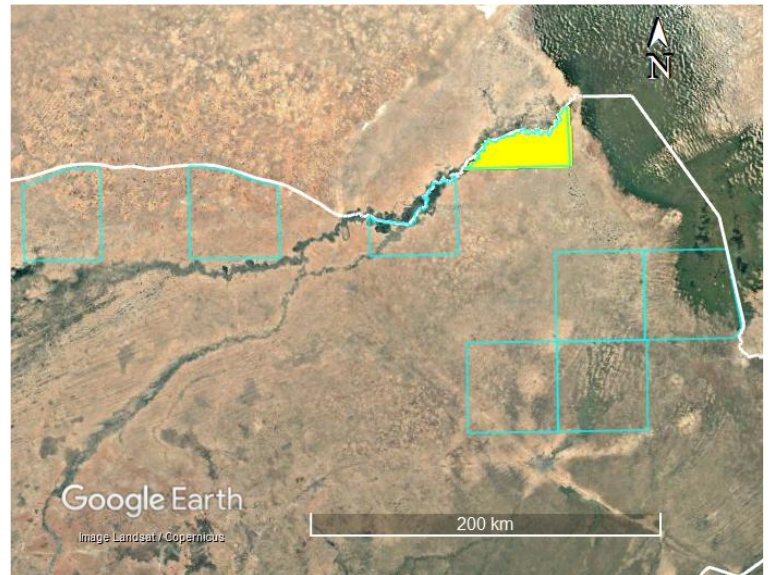
The PPL 700 covers an area of approximately 992.6km². The block lies along Nigeria's northeastern boundary with the Republic of Niger, extending across Bornu and Yobe States. The block occupies the Nigerian sector of the Chad Basin, an intra-cratonic rift basin formed during early Cretaceous extension related to the West and Central African Rift System (WCARS).

Sediment thickness is over 27,000 feet of early Cretaceous – recent sediments to the south of the block and estimated above the Basement complex. With good geothermal gradient, source rock is matured to expel oil / gas.

The stratigraphic succession in PPL-700 block includes the Bima Sandstone, Gongila Formation, Fika Shale, Kerri-Kerri Formation, and younger Quaternary deposits. Reservoir prospects are strongest in the Bima Sandstone, which contains thick, coarse to medium-grained fluvial sand bodies with good porosity and permeability. Additional reservoir potential exists within the Gongila marine sandstones, which form localized but high-quality transgressive sand bodies. In shallower parts of the blocks, the Kerri-Kerri Formation also hosts porous continental sandstones that may serve as secondary reservoirs. The main Source rocks are the Gongila Formation shale and the Fika shale both of which contain moderate to good organic richness and Type II/III Kerogene.

Different vintages of 2D seismic data acquired by NNPC are available on the block. No well has been drilled to date.

Generally, the petroleum system is established in the region where the block is situated, but more exploration effort is required.





NIGERIAN UPSTREAM PETROLEUM REGULATORY COMMISSION

For all enquires please
contact us at

br2025@nuprc.gov.ng