



**NIGERIAN UPSTREAM
PETROLEUM REGULATORY
COMMISSION**

Nigeria 2025

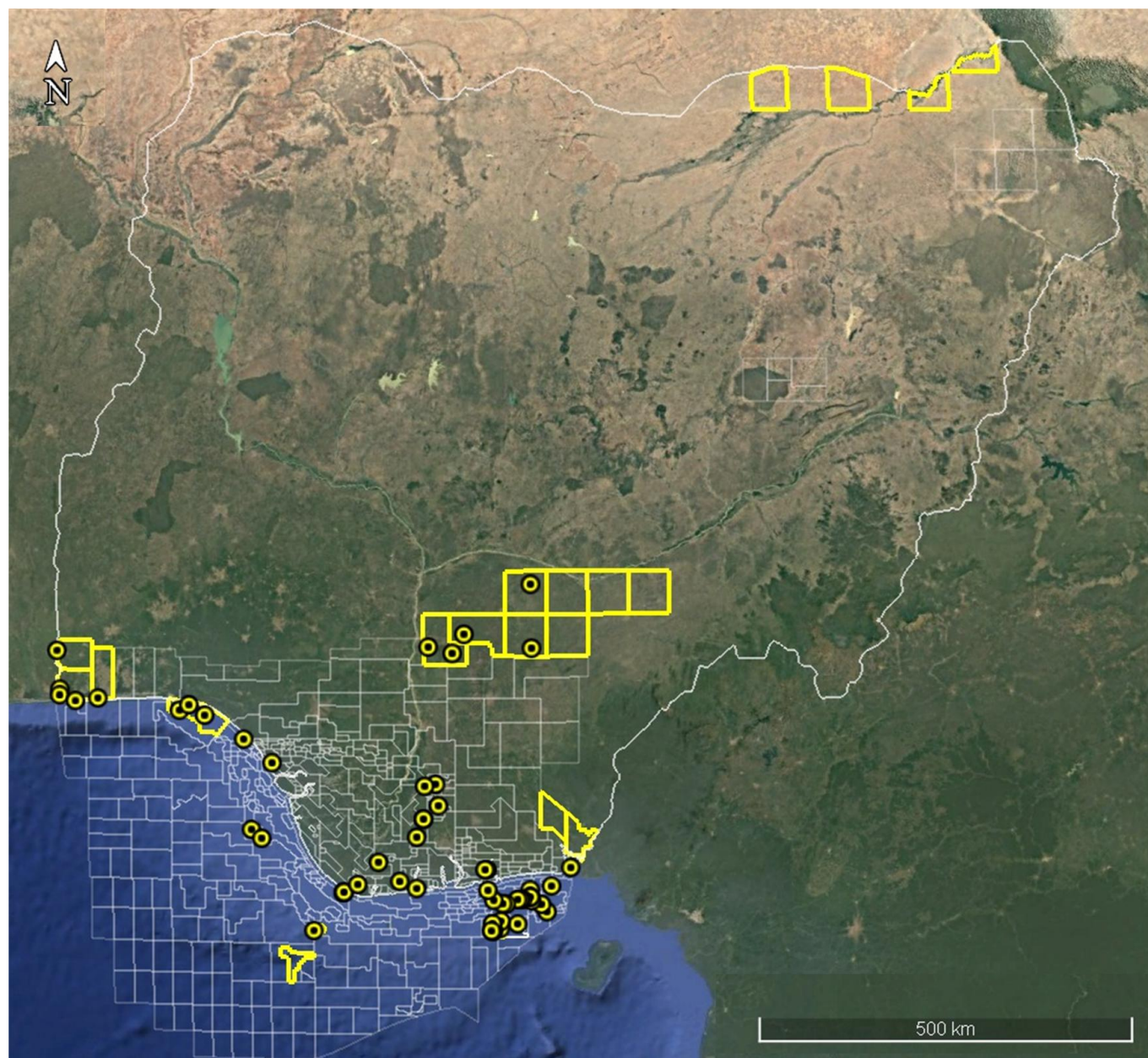
Licensing Round

PPL 2A47

Nigeria 2025 Licensing Round Block Information Table



**NIGERIAN UPSTREAM
PETROLEUM REGULATORY
COMMISSION**



EASTERN NIGER DELTA BLOCKS ON OFFER

BOCK NAME	BLOCK KM ² (Approx.)	DATA TYPE	DATA KM ²	TERRAIN
PPL 2A29	xx	3D Seismic + Okoroma-1	XX	Onshore
PPL 2A30	xx	3D Seismic +Twoni-1	XX	Onshore
PPL 2A32	xx	3D Seismic +Yorla South-1 & 2	XX	Onshore
PPL 2A38	xx	Idege-1	XX	Onshore
PPL 2A46	xx	3D Seismic + Amara-1	XX	Onshore
PPL 2A47	31	3D Seismic + Anuri-1	XX	Onshore
PPL 2A48	xx	3D Seismic + Akiapiri-1	XX	Onshore
PPL 2A50	xx	3D Seismic + Ndele-1	XX	Onshore
PPL 2A51	xx	3D Seismic + Oforola-1	XX	Onshore
PPL 2A54	xx	3D Seismic + Umudioga-1	XX	Onshore

For all enquires please contact us at br2025@nuprc.gov.ng

Nigeria 2025 Licensing Round

PPL 2A47



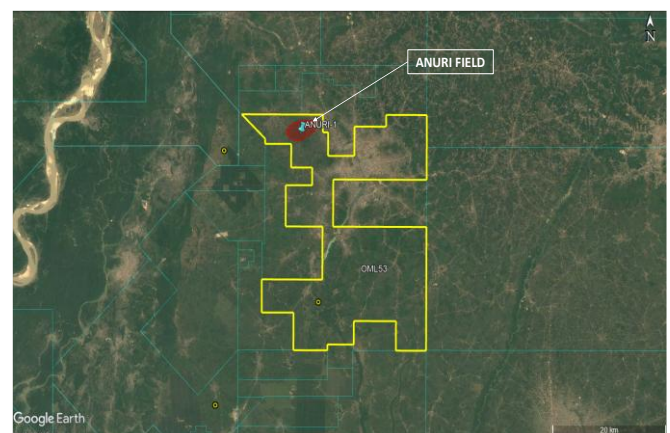
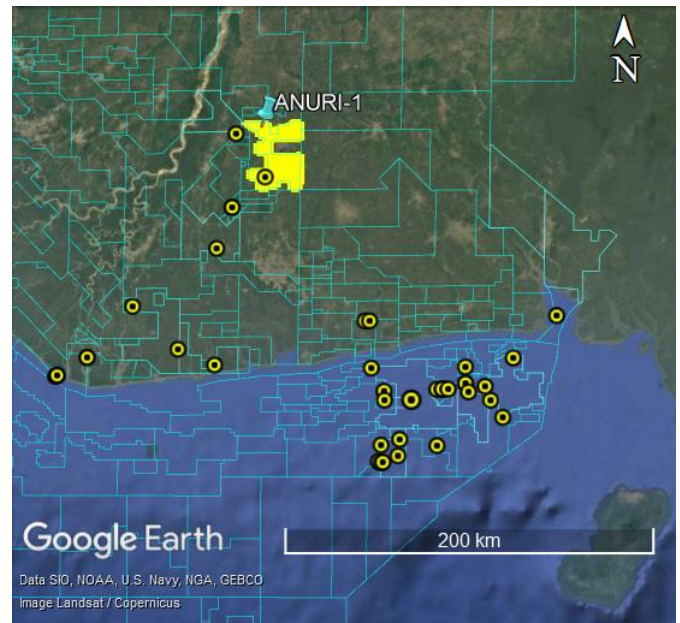
**NIGERIAN UPSTREAM
PETROLEUM REGULATORY
COMMISSION**

PPL 2A47 covers an area excised from OML 53 in accordance with the Petroleum Industry Act (PIA) 2021.

The Anuri field is in the onshore land terrain in the eastern Niger Delta sedimentary basin. The block is approximately 22 kilometers southwest of the Ibigwe flow station.

Available data include 3D seismic acquired by Chevron. Anuri-1 was successfully drilled by Chevron from October 9 to November 8, 1995 to a total depth of 9,000 feet (MD). The well penetrated a total of 12 feet of oil in 1 sand. Anuri-1 was subsequently plugged and abandoned.

Seplat Energy currently operates OML 53





NIGERIAN UPSTREAM PETROLEUM REGULATORY COMMISSION

For all enquires please
contact us at

br2025@nuprc.gov.ng