



**NIGERIAN UPSTREAM  
PETROLEUM REGULATORY  
COMMISSION**

# **Nigeria 2025**

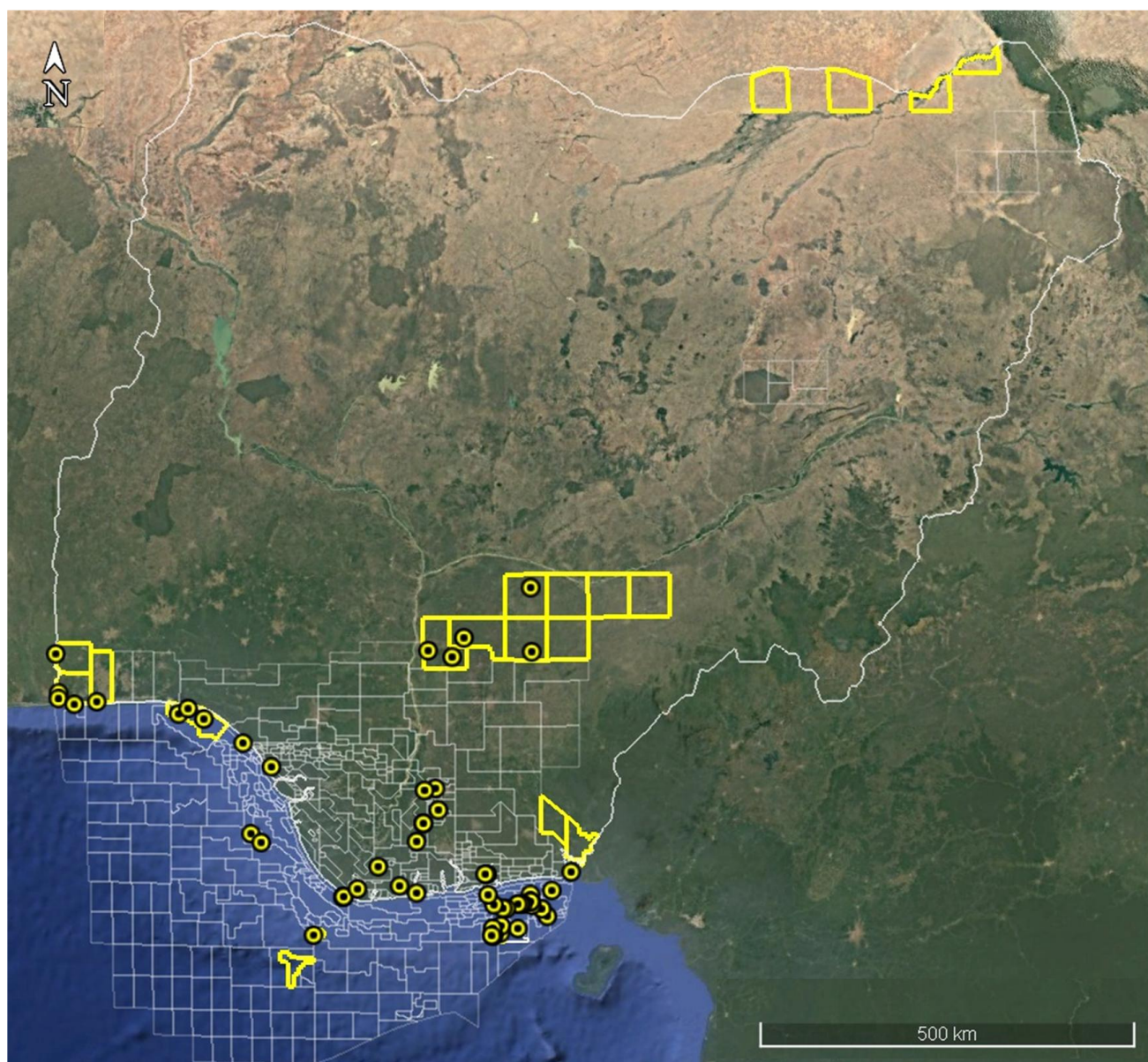
## **Licensing Round**

**PPL 2A54**

# Nigeria 2025 Licensing Round Block Information Table



**NIGERIAN UPSTREAM  
PETROLEUM REGULATORY  
COMMISSION**



## EASTERN NIGER DELTA BLOCKS ON OFFER

BOCK NAME	BLOCK KM <sup>2</sup> (Approx)	DATA TYPE	DATA KM <sup>2</sup>	TERRAIN
PPL 2A29	xx	3D Seismic + Okoroma-1	XX	Onshore
PPL 2A30	xx	3D Seismic + Twoni-1	XX	Onshore
PPL 2A32	xx	3D Seismic + Yorla South-1 & 2	XX	Onshore
PPL 2A38	xx	Idege-1	XX	Onshore
PPL 2A46	xx	3D Seismic + Amara-1	XX	Onshore
PPL 2A47	xx	3D Seismic + Anuri-1	XX	Onshore
PPL 2A48	xx	3D Seismic + Akiapiri-1	XX	Onshore
PPL 2A50	xx	3D Seismic + Ndele-1	XX	Onshore
PPL 2A51	xx	3D Seismic + Oforola-1	XX	Onshore
<b>PPL 2A54</b>	<b>15</b>	<b>3D Seismic + Umudioga-1</b>	<b>XX</b>	<b>Onshore</b>

For all enquires please contact us at [br2025@nuprc.gov.ng](mailto:br2025@nuprc.gov.ng)

## Nigeria 2025 Licensing Round

# PPL 2A54

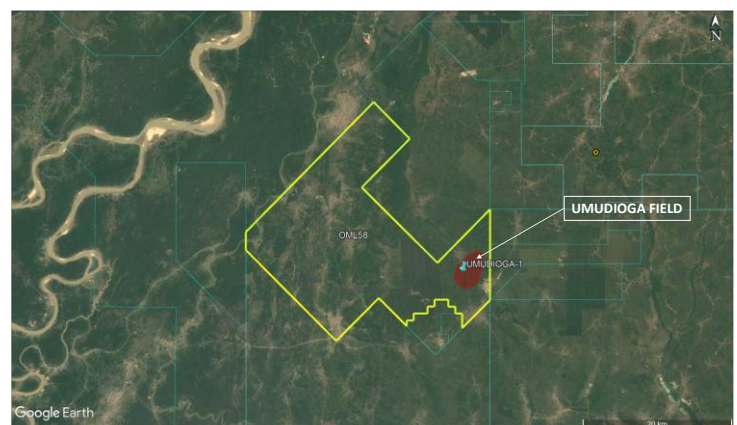
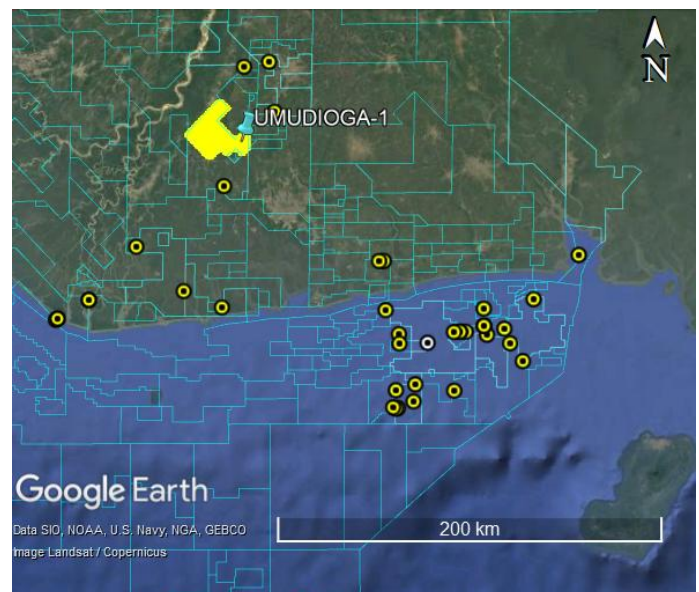


**NIGERIAN UPSTREAM  
PETROLEUM REGULATORY  
COMMISSION**

PPL 2A54 covers an area excised from OML 58 in accordance with the Petroleum Industry Act (PIA) 2021. PPL 2A54 is situated onshore land in the eastern Niger Delta. The block is covered by 3D seismic data acquired by Total Energies in 1993. OML 58 is currently operated by TotalEnergies.

The Umudioga field is located in the eastern section of the Greater Ughelli Depobelt. The nearest facility is the Obagi flowstation (TotalEnergies).

Umudioga field was discovered by TotalEnergies through the drilling of the Umudioga-1 between July 27 and September 2, 1965, to a total depth of 11,841 feet (MD). Umudioga-1 encountered three hydrocarbon-bearing sands (Sands A, B and C), with a combined estimated hydrocarbon net pay of 143 feet. The well is currently plugged and abandoned.





# **NIGERIAN UPSTREAM PETROLEUM REGULATORY COMMISSION**

For all enquires please  
contact us at

[br2025@nuprc.gov.ng](mailto:br2025@nuprc.gov.ng)