



**NIGERIAN UPSTREAM
PETROLEUM REGULATORY
COMMISSION**

Nigeria 2025

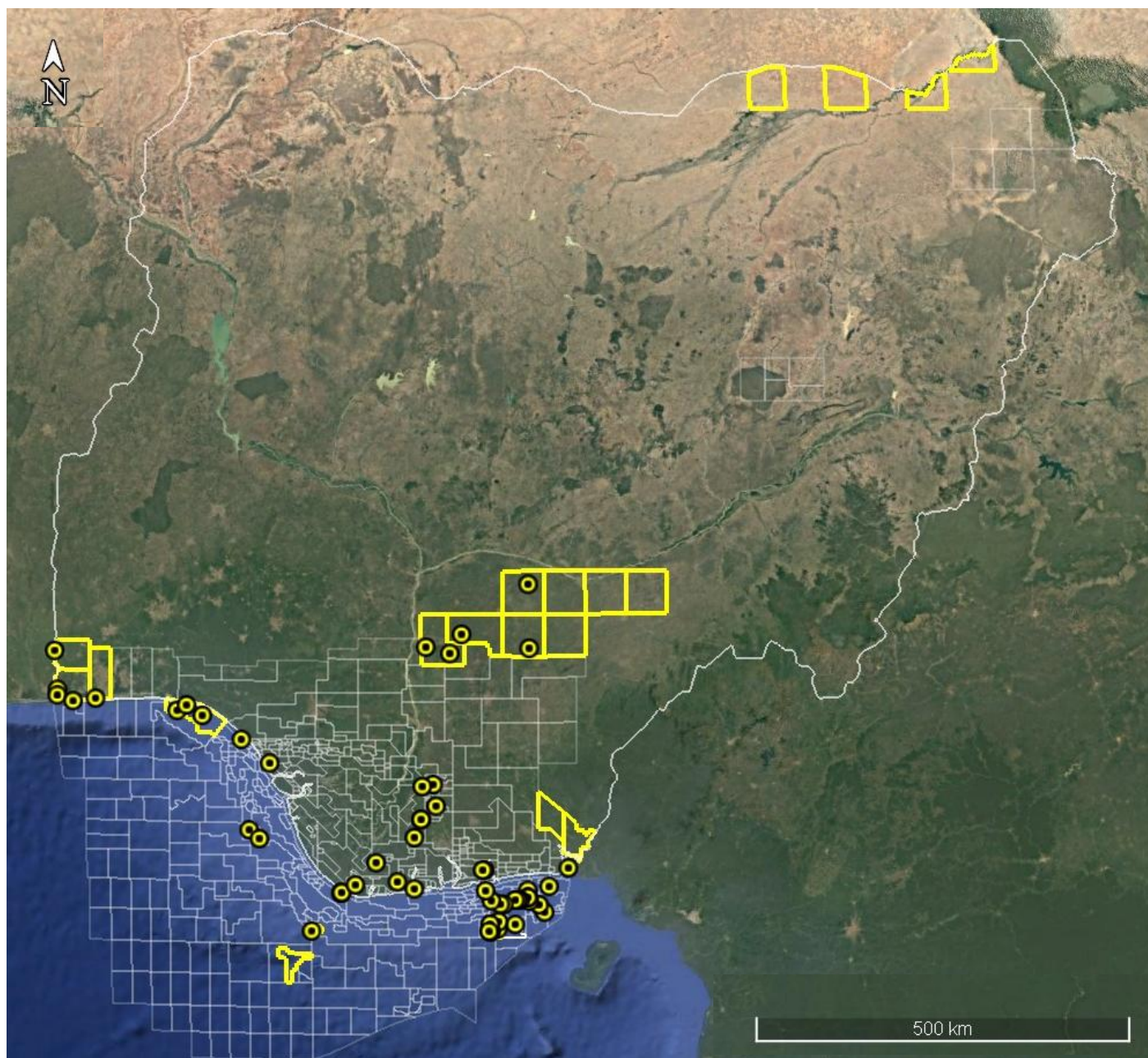
Licensing Round

PPL 2A59

Nigeria 2025 Licensing Round Block Information Table



**NIGERIAN UPSTREAM
PETROLEUM REGULATORY
COMMISSION**



TRANSITION BENIN / NIGER DELTA OFFSHORE BLOCKS ON OFFER

Block Name	Block km ² (Approx)	Data type	Data km ²	Water Depth (m)
PPL-2A59	1539	Ise-1, Bede-1, Avon-1		0 - 50

For all enquires please contact us at br2025@nuprc.gov.ng

Nigeria 2025 Licensing Round

PPL 2A59



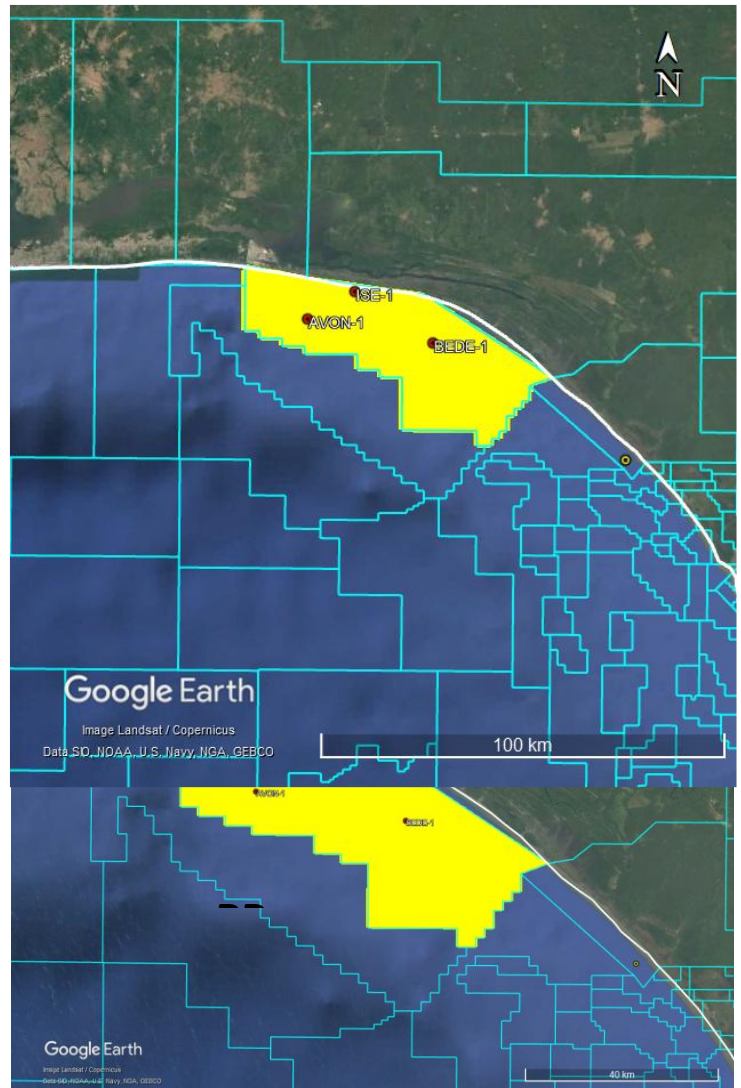
**NIGERIAN UPSTREAM
PETROLEUM REGULATORY
COMMISSION**

PPL 2A59 covers an area of 1539 km² which extends across the coastline of eastern Lagos, through Ogun State to the central costal part of Ondo State. The maximum water depth is ~ 50 metres.

Available data include 2D seismic data coverage across the block has three (3) wells drilled - Ise-1 was drilled by Tenneco in 1962 to a TD of 6,614 feet. Bede-1 by Chevron in 1967 to a TD of 4,580 feet. Avon-1 was drilled in 1970 by Chevron to a TD of 4,806 feet.

The area falls within the Transform Margin Basin situated between the eastern limit of Dahomey Basin (Lagos/Weste Africa margin) to the western boundary of Niger Delta. Two major petroleum plays are recognized in the Nigerian Transform Margin: the syn-transform Lower Cretaceous and the post-transform Upper Cretaceous. During this period, thick sequences of continental to marine clastic and carbonates were deposited, offering potential reservoir intervals that include fluvial to marginal-marine sandstones and shallow-marine limestones. Source rocks evolved from deeper Aptian lacustrine shales to shallower Mid-Albian marginal-marine shales as rifting progressed.

The Upper Cretaceous petroleum system is sourced primarily from Cenomanian–Turonian shales deposited under deep, anoxic marine conditions. These Type II source rocks have mixed oil and gas generation potential. Reservoir opportunities are provided by Albian to Santonian shallow- to deep-marine sandstones.





NIGERIAN UPSTREAM PETROLEUM REGULATORY COMMISSION

For all enquires please
contact us at

br2025@nuprc.gov.ng