



**NIGERIAN UPSTREAM
PETROLEUM REGULATORY
COMMISSION**

Nigeria 2025

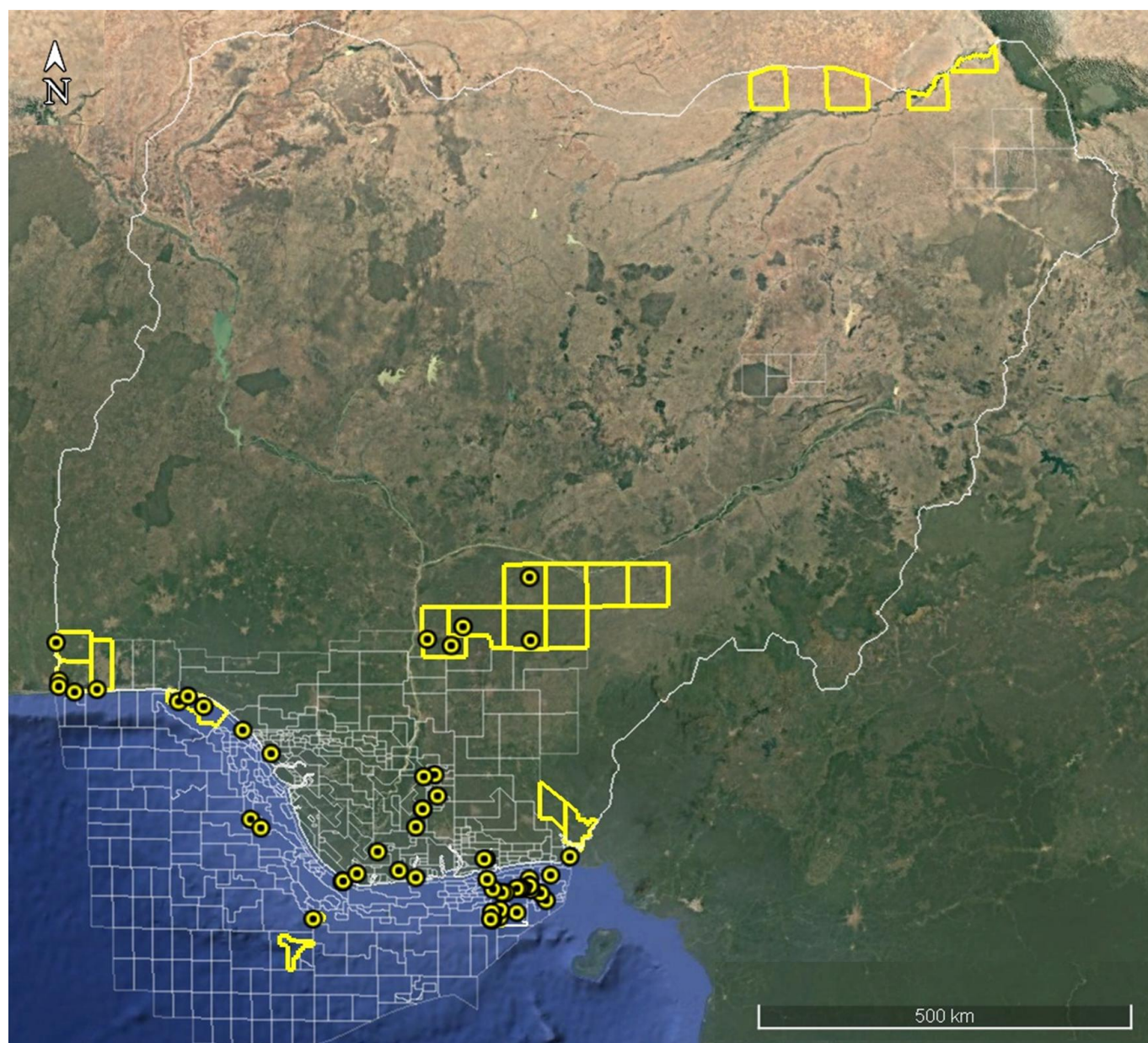
Licensing Round

PPL 2A50

Nigeria 2025 Licensing Round Block Information Table



**NIGERIAN UPSTREAM
PETROLEUM REGULATORY
COMMISSION**



EASTERN NIGER DELTA BLOCKS ON OFFER

BOCK NAME	BLOCK km ² (Approx.)	DATA TYPE	DATA km ²	TERRAIN
PPL 2A29	xx	3D Seismic + Okoroma-1	XX	Onshore
PPL 2A30	xx	3D Seismic +Twoni-1	XX	Onshore
PPL 2A32	xx	3D Seismic +Yorla South-1 & 2	XX	Onshore
PPL 2A38	xx	3D Seismic + Idege-1	XX	Onshore
PPL 2A46	xx	3D Seismic + Amara-1	XX	Onshore
PPL 2A47	xx	3D Seismic + Anuri-1	XX	Onshore
PPL 2A48	xx	3D Seismic + Akiapiri-1	XX	Onshore
PPL 2A50	16	3D Seismic + Ndele-1	XX	Onshore
PPL 2A51	xx	3D Seismic + Oforola-1	XX	Onshore
PPL 2A54	xx	3D Seismic + Umudioga-1	XX	Onshore

For all enquires please contact us at br2025@nuprc.gov.ng

Nigeria 2025 Licensing Round

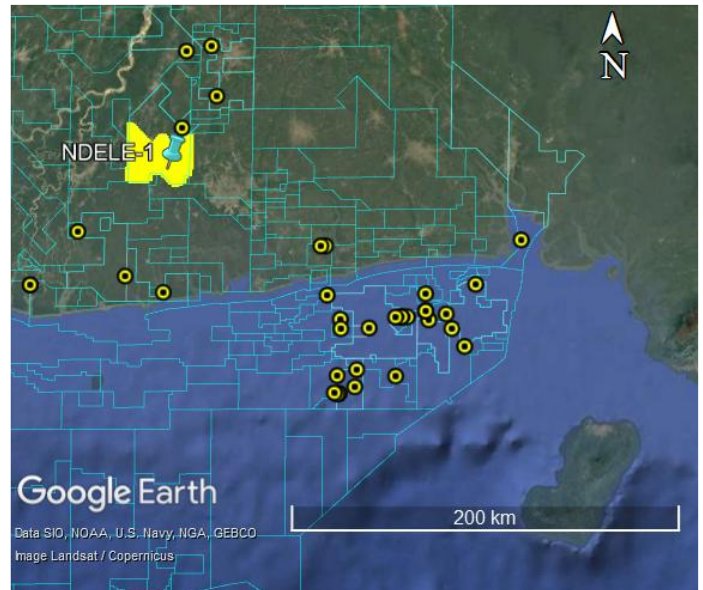
PPL 2A50



**NIGERIAN UPSTREAM
PETROLEUM REGULATORY
COMMISSION**

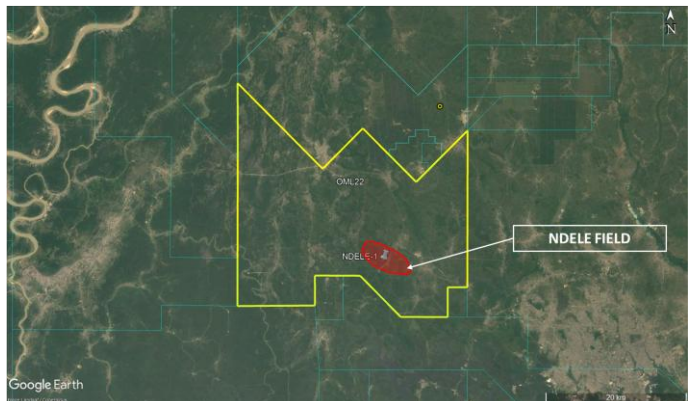
PPL 2A50 covers an area excised from OML 22 in accordance with the Petroleum Industry Act (PIA) 2021. PPL 2A50 is situated in eastern Niger Delta. The block is covered by 3D seismic data acquired by SPDC in 2011.

The Ndele field is in the southern part of OML 22 nearby the Ogbele and Rumuekpe fields. It is situated in the Central Swamp Depobelt onshore land terrain, Niger Delta sedimentary basin. The evacuation strategy could be via trucking to Ogbele flowstation.



Ndele Field was discovered by SPDC following the drilling of Ndele-1 between February 25 and March 10, 1964, to a total depth of 10,798 feet (MD). Ndele-1 encountered one hydrocarbon-bearing sand (gas and oil) with an estimated net hydrocarbon pay of 26 feet. The well is currently plugged and abandoned.

OML 22 is currently operated by Renaissance Energy Africa.





NIGERIAN UPSTREAM PETROLEUM REGULATORY COMMISSION

For all inquiries, please
contact us at

br2025@nuprc.gov.ng