



**NIGERIAN UPSTREAM
PETROLEUM REGULATORY
COMMISSION**

Nigeria 2025

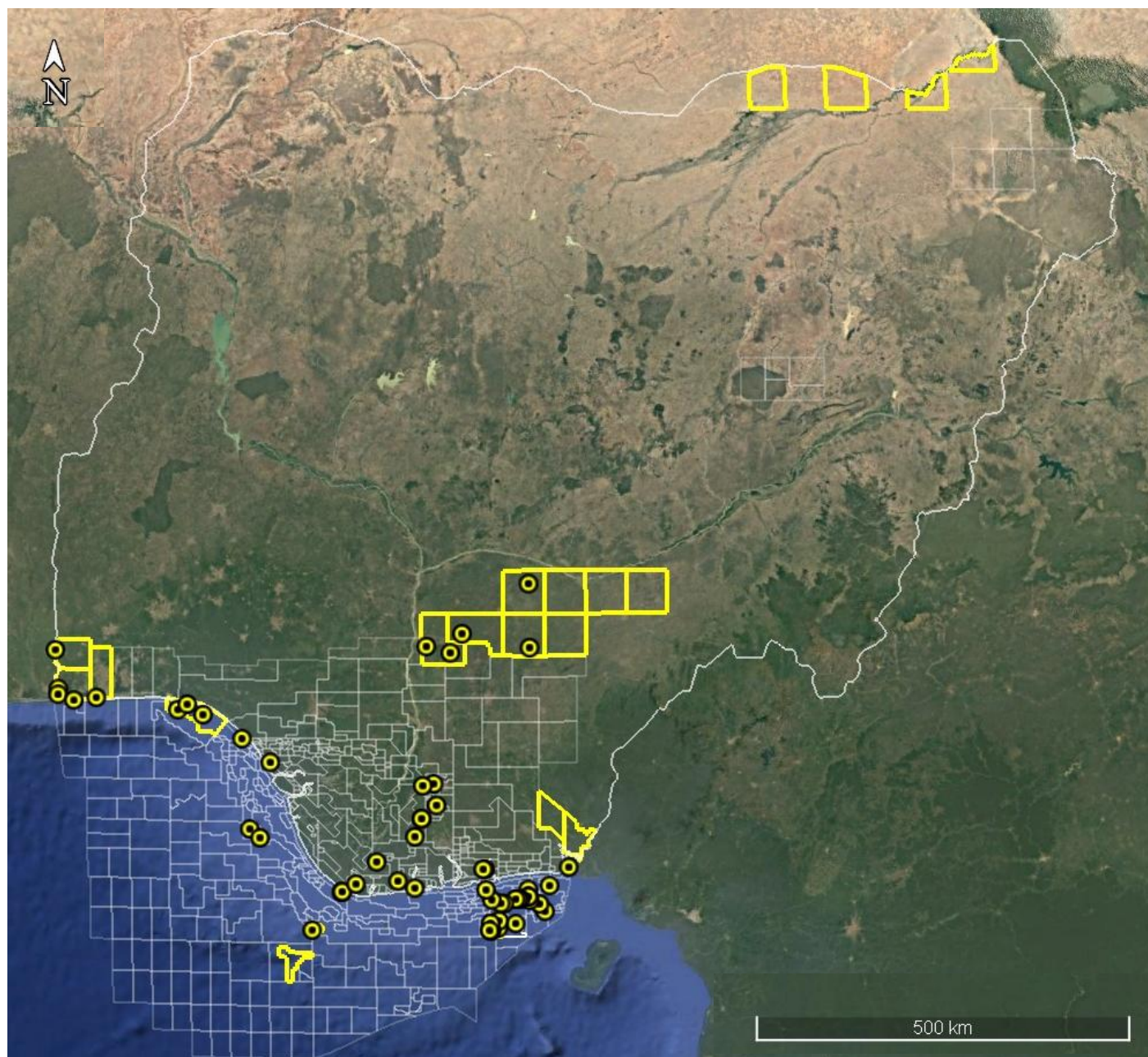
Licensing Round

PPL 2A60

Nigeria 2025 Licensing Round Block Information Table



**NIGERIAN UPSTREAM
PETROLEUM REGULATORY
COMMISSION**



NIGER DELTA BASIN OFFSHORE BLOCKS ON OFFER

Block Name	Block km ² (Approx)	Data type	Data km ²	Water Depth (m)
PP -2A58	172.8	3D Seismic + Lobia-1	172.8	60-200
PPL 2A60	341	3D Seismic + Ediye-1 & 2, Enin-1, LOO-1, Obufa-1 & 2, Utip-1		60 - 105
PPL 2010	644.6	3D Seismic		300-700

For all enquires please contact us at br2025@nuprc.gov.ng

Nigeria 2025 Licensing Round

PPL 2A60



**NIGERIAN UPSTREAM
PETROLEUM REGULATORY
COMMISSION**

Block PPL 2A60 covers an area of approx. 341 sqkm excised from OML 104 in accordance with the Petroleum Industry Act (PIA) 2021. It lies in the outer limit of the continental shelf in water depths ranging between 60 to 105 meters.

PPL 2A60 is located in the eastern part of the shallow offshore Niger-Delta sedimentary basin. The block was previously operated as part of OML 104 by ExxonMobil. It is currently operated by Seplat Energy.

The block is fully covered by 3D seismic acquired by ExxonMobil. Seven wells have been drilled in the block namely, Ediye-1 & 2, Enin-1, LOO-1, Obufa-1 & 2, Utip-1 and one discovery Utip field.

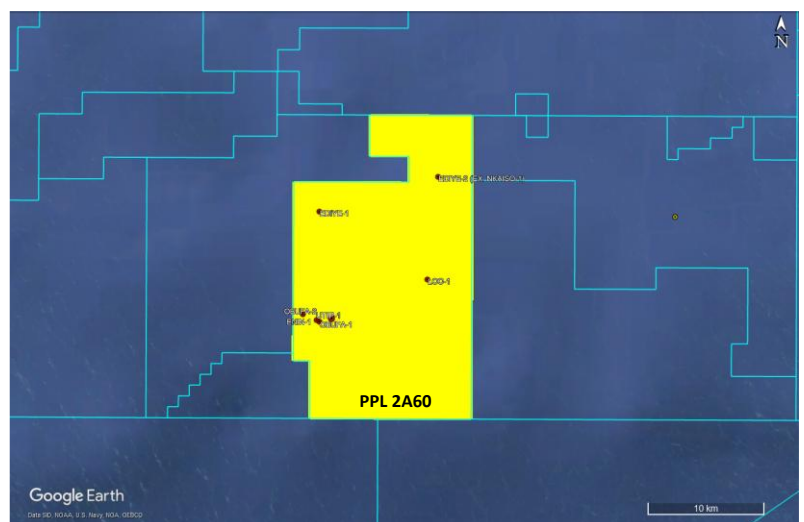
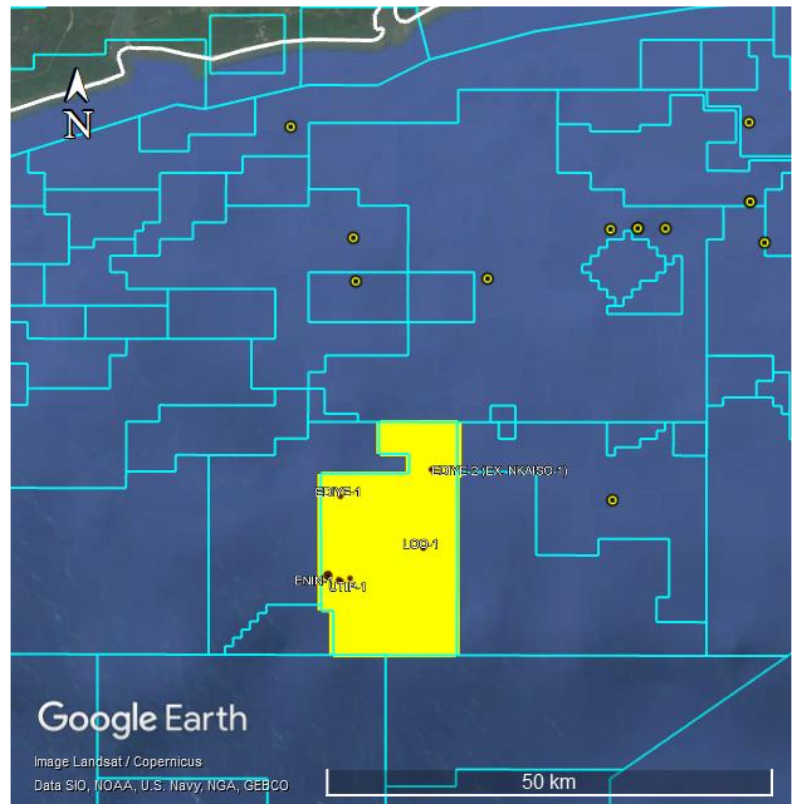
The Utip field is situated in the southwestern part of the block. Utip field was discovered by ExxonMobil through the drilling of Utip-1 well between September 30 and November 8, 1994 to a total depth of 10,643.05 feet (MD) and tested oil and gas.

The other wells within the block vicinity –

Ediye-1, Ediye-2 and LOO-1 were drilled by Mobil between July 17 and September 1991, January 8 and February 1992, and January 22 and February 11, 1968 to a total depth of 11,174 feet, 9,304.46 feet and 10,000 feet MD respectively.

Enin-1, Obufa-1, and Obufa-2 were drilled by NNPC between February 19 and April 2, 1979, February 19 and April 1, 1979 and February 27 and May 9, 1980 to a total depth of 9,662 feet, 9662 feet and 11473 feet respectively.

All seven (7) wells are plugged and abandoned.





NIGERIAN UPSTREAM PETROLEUM REGULATORY COMMISSION

For all enquires please
contact us at

br2025@nuprc.gov.ng