



**NIGERIAN UPSTREAM
PETROLEUM REGULATORY
COMMISSION**

Nigeria 2025

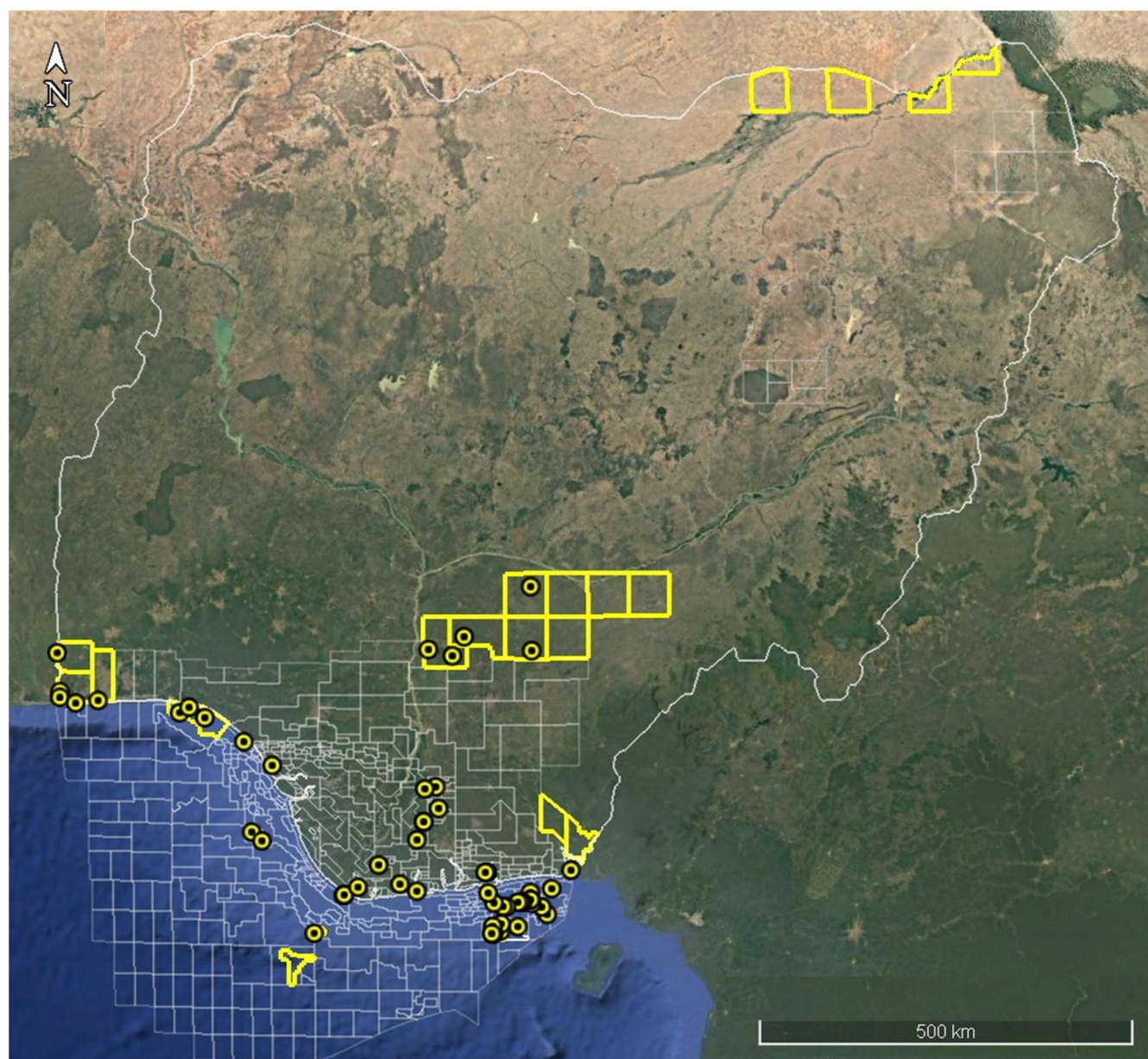
Licensing Round

PPL 2A48

Nigeria 2025 Licensing Round Block Information Table



**NIGERIAN UPSTREAM
PETROLEUM REGULATORY
COMMISSION**



EASTERN NIGER DELTA BLOCKS ON OFFER

BLOCK NAME	BLOCK KM ² (Approx.)	DATA TYPE	DATA KM ²	TERRAIN
PPL 2A29	xx	3D Seismic + Okoroma-1	XX	Onshore
PPL 2A30	xx	3D Seismic + Twoni-1	XX	Onshore
PPL 2A32	xx	3D Seismic + Yorla South-1 & 2	XX	Onshore
PPL 2A38	xx	Idege-1	XX	Onshore
PPL 2A46	xx	3D Seismic + Amara-1	XX	Onshore
PPL 2A47	xx	3D Seismic + Anuri-1	XX	Onshore
PPL 2A48	16	3D Seismic + Akiapiri-1	XX	Onshore
PPL 2A50	xx	3D Seismic + Ndele-1	XX	Onshore
PPL 2A51	xx	3D Seismic + Oforola-1	XX	Onshore
PPL 2A54	xx	3D Seismic + Umudioga-1	XX	Onshore

For all enquires please contact us at br2025@nuprc.gov.ng

Nigeria 2025 Licensing Round

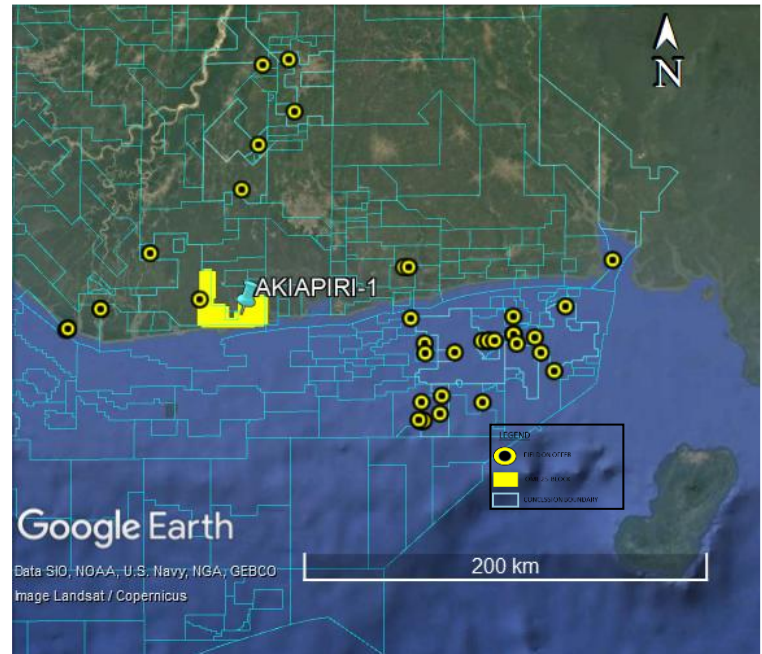
PPL 2A48



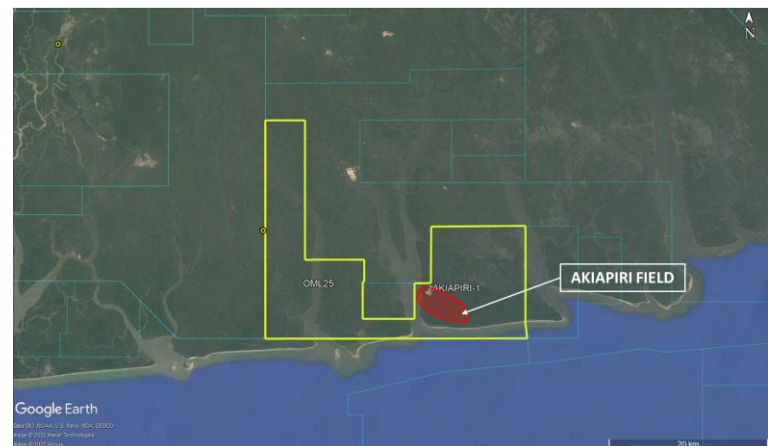
**NIGERIAN UPSTREAM
PETROLEUM REGULATORY
COMMISSION**

PPL 2A48 covers an area excised from OML 25 in accordance with the Petroleum Industry Act (PIA) 2021. PPL 2A48 is situated in the Coastal Swamp-1 Depobelt onshore swamp terrain eastern Niger Delta sedimentary basin.

Available data include 3D seismic acquired by SPDC in 1990 and one well drilled - Akiapiri-1 between July 27 and August 17, 1966 to a total depth of 12,918 feet (MD). The well was drilled off-structure. The well is currently plugged and abandoned.



OML 25 is currently operated by Renaissance Energy Africa Limited.





NIGERIAN UPSTREAM PETROLEUM REGULATORY COMMISSION

For all enquires please
contact us at

br2025@nuprc.gov.ng