



**NIGERIAN UPSTREAM
PETROLEUM REGULATORY
COMMISSION**

Nigeria 2025

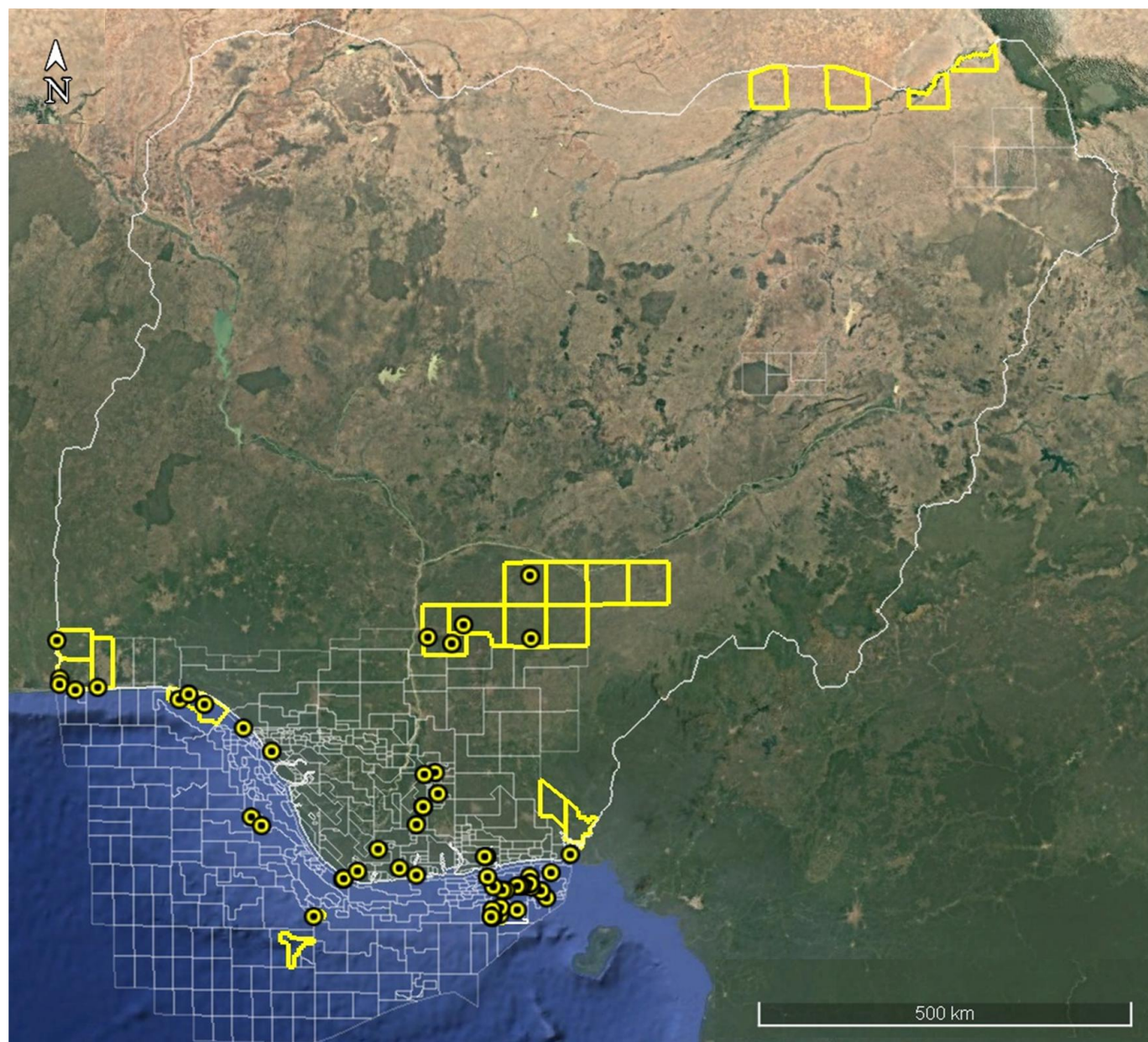
Licensing Round

PPL 2A32

Nigeria 2025 Licensing Round Information Table



**NIGERIAN UPSTREAM
PETROLEUM REGULATORY
COMMISSION**



EASTERN NIGER DELTA BLOCKS ON OFFER

BOCK NAME	BLOCK KM ² (Approx.)	DATA TYPE	DATA KM ²	TERRAIN
PPL 2A29	xx	3D Seismic + Okoroma-1	XX	Onshore
PPL 2A30	xx	3D Seismic +Twoni-1	XX	Onshore
PPL 2A32	30	3D Seismic +Yorla South-1 & 2	XX	Onshore
PPL 2A38	xx	Idege-1	XX	Onshore
PPL 2A46	xx	3D Seismic + Amara-1	XX	Onshore
PPL 2A47	xx	3D Seismic + Anuri-1	XX	Onshore
PPL 2A48	xx	3D Seismic + Akiapiri-1	XX	Onshore
PPL 2A50	xx	3D Seismic + Ndele-1	XX	Onshore
PPL 2A51	xx	3D Seismic + Oforola-1	XX	Onshore
PPL 2A54	xx	3D Seismic + Umudioga-1	XX	Onshore

For all enquires please contact us at br2025@nuprc.gov.ng

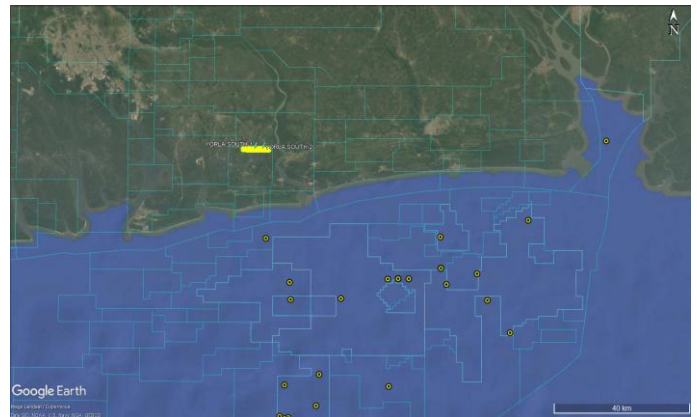
Nigeria 2025 Licensing Round

PPL 2A32



**NIGERIAN UPSTREAM
PETROLEUM REGULATORY
COMMISSION**

PPL 2A32 covers an area excised from OML 51 in accordance with the Petroleum Industry Act (PIA) 2021. PPL 2A32 is situated in eastern Niger Delta. The block is covered by 2D seismic data acquired by Shell/Chevron.



The Yorla South field is in the Coastal Swamp 1 Depobelt onshore swamp terrain, eastern Niger Delta sedimentary basin.

The Yorla South field was discovered by Gulf through the drilling of the Yorla South-1 between October 16, 1973, and January 7, 1974, to a total depth of 12,679 feet (MD) and Yorla South-2 between January 12 and April 4, 1974 to a total depth of 11,699 feet (MD). Yorla South-1 encountered four (4) hydrocarbon-bearing sands with a combined estimated hydrocarbon net pay of 240 feet. Yorla South-1 is suspended while Yorla South-2 is currently plugged and abandoned.



OML 51 is currently operated by NNPC E & P Limited.



NIGERIAN UPSTREAM PETROLEUM REGULATORY COMMISSION

For all enquires please
contact us at

br2025@nuprc.gov.ng