



**NIGERIAN UPSTREAM  
PETROLEUM REGULATORY  
COMMISSION**

# **Nigeria 2025**

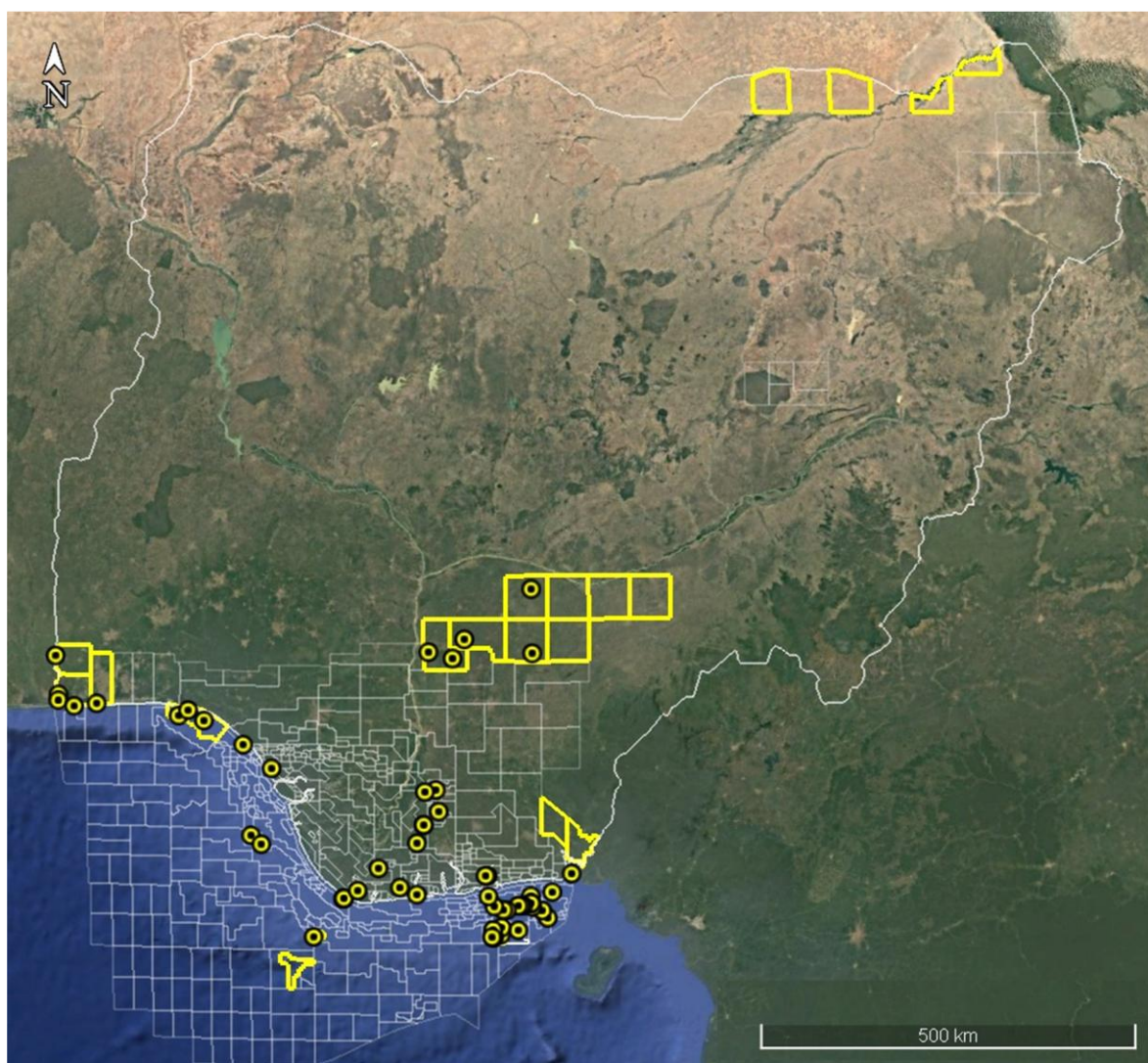
## **Licensing Round**

### **PPL 2A44**

# Nigeria 2025 Licensing Round Block Information Table



**NIGERIAN UPSTREAM  
PETROLEUM REGULATORY  
COMMISSION**



## EASTERN OFFSHORE NIGER DELTA BLOCKS ON OFFER

Block Name	Block km <sup>2</sup>	Data type	Data km <sup>2</sup>	Water Depth (m)
PPL 2A31		3D Seismic + Ikuru-1		n/a
PPL 2A34		3D Seismic + Kenam-1		22
PPL 2A39		3D Seismic + Ebet-1		20
PPL 2A40		3D Seismic + Ebiya-1		24
PPL 2A41		3D Seismic + Idiok-1		15
PPL 2A42		3D Seismic + Oyobio-1, Oyobio-1 ST		38
PPL 2A43		3D Seismic + Utai-1, Utai-2, Utai-13		21
<b>PPL 2A44</b>	<b>13</b>	<b>3D Seismic + Usari East-1, 2</b>		<b>22</b>
PPL 2A45		3D Seismic + Obio-1		n/a
PPL 2A52		3D Seismic + Ayama-1, 2		61
PPL 2A53		3D Seismic + LHH-1		n/a
PPL 2A55		3D Seismic + Usiere-1		26.2
PPL 2A56		3D Seismic + Offiong-1		25
PPL 2A57		3D Seismic + Nkanda-1		23

For all enquires please contact us at [br2025@nuprc.gov.ng](mailto:br2025@nuprc.gov.ng)

## Nigeria 2025 Licensing Round

# PPL 2A44



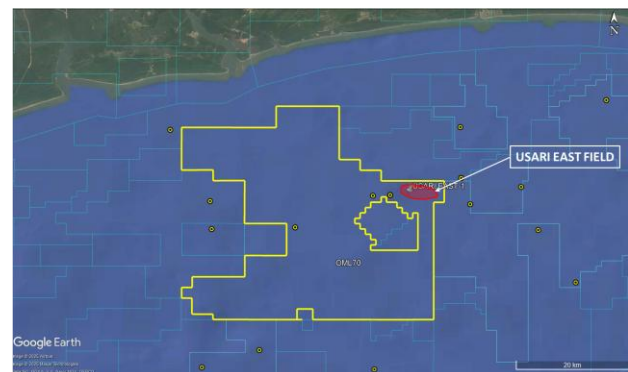
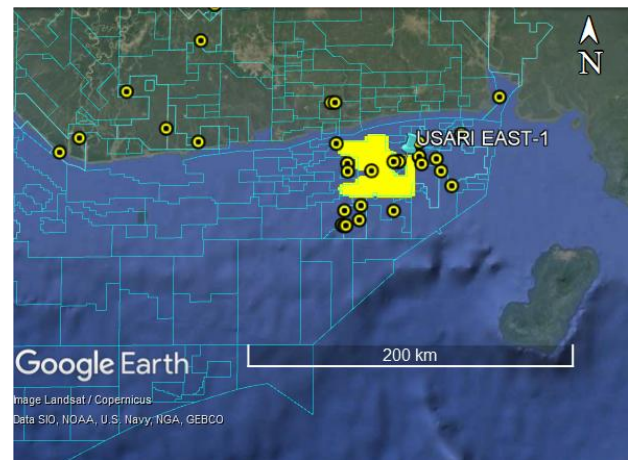
**NIGERIAN UPSTREAM  
PETROLEUM REGULATORY  
COMMISSION**

PPL 2A44 covers an area excised from OML 70 in accordance with the Petroleum Industry Act (PIA) 2021. PPL 2A44 is situated in the shallow offshore eastern Niger Delta sedimentary basin. The closest processing facility is Enang Platform (Seplat Energy).

Available data include 3D seismic acquired by ExxonMobil and one well drilled, Usari East-1. The well was drilled in water depth of 22 metres by ExxonMobil between May 15 and May 30, 1978, to a total depth of 7,087 feet (MD).

The well penetrated a total of 353 feet of gas in five (5) sands and 42 feet of oil in two (2) sands. The well was subsequently suspended.

OML 70 is currently operated by Seplat Energy.



[br2025@nuprc.gov.ng](mailto:br2025@nuprc.gov.ng)