



**NIGERIAN UPSTREAM
PETROLEUM REGULATORY
COMMISSION**

Nigeria 2025

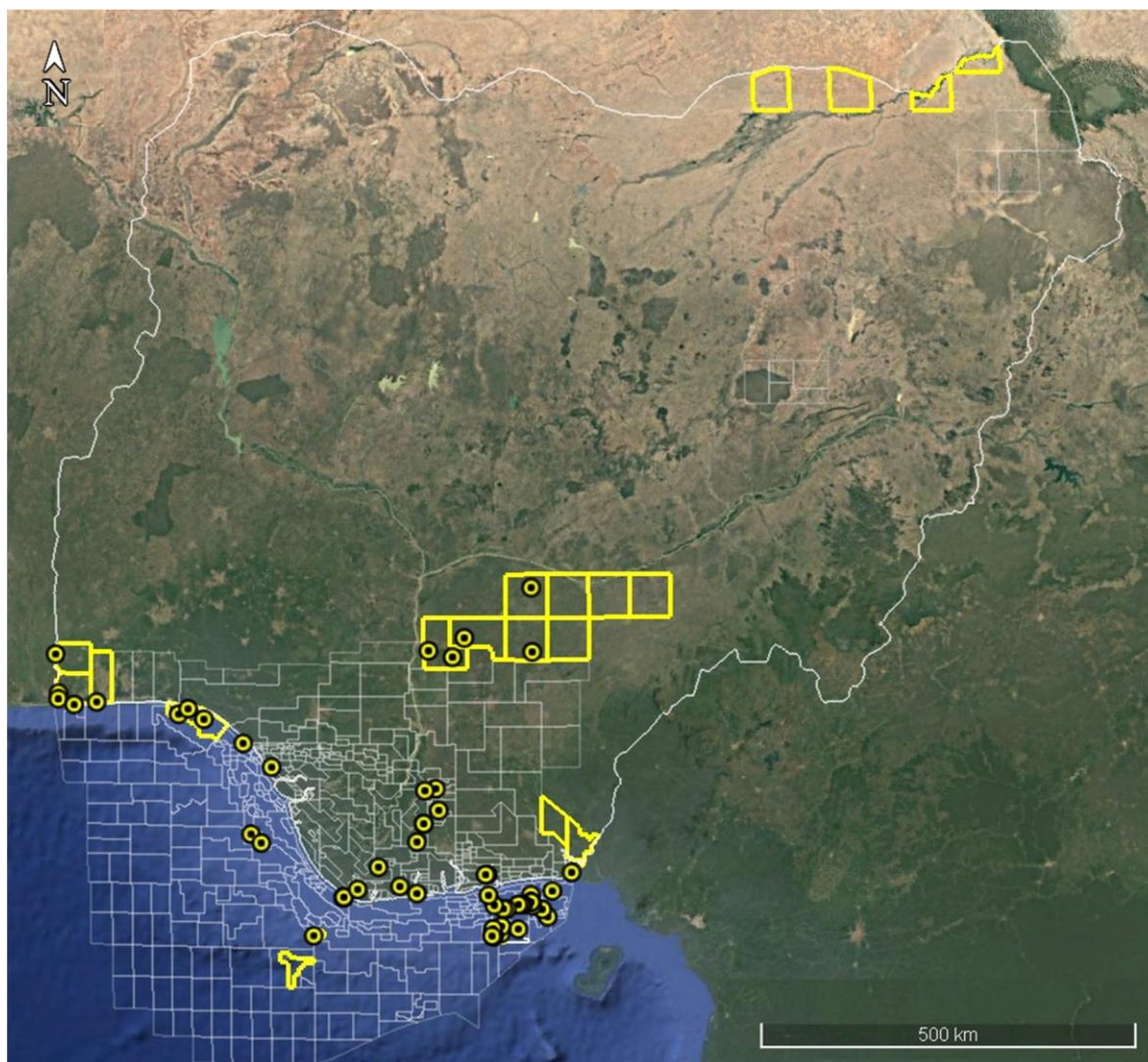
Licensing Round

PPL 2A55

Nigeria 2025 Licensing Round Block Information Table



**NIGERIAN UPSTREAM
PETROLEUM REGULATORY
COMMISSION**



EASTERN OFFSHORE NIGER DELTA BLOCKS ON OFFER

Block Name	Block km ² (Approx)	Data type	Data km ²	Water Depth (m)
PPL 2A31		3D Seismic + Ikuru-1		n/a
PPL 2A34		3D Seismic + Kenam-1		22
PPL 2A39		3D Seismic + Ebet-1		20
PPL 2A40		3D Seismic + Ebiya-1		24
PPL 2A41		3D Seismic + Idiok-1		15
PPL 2A42		3D Seismic + Oyobio-1, Oyobio-1 ST		38
PPL 2A43		3D Seismic + Utai-1, Utai-2, Utai-13		21
PPL 2A44		3D Seismic + Usari East-1, 2		22
PPL 2A45		3D Seismic + Obio-1		n/a
PPL 2A52		3D Seismic + Ayama-1, 2		61
PPL 2A53		3D Seismic + LHH-1		n/a
PPL 2A55	20	3D Seismic + Usiere-1		30
PPL 2A56		3D Seismic + Offiong-1		25
PPL 2A57		3D Seismic + Nkanda-1		23

For all enquires please contact us at br2025@nuprc.gov.ng

Nigeria 2025 Licensing Round

PPL 2A55



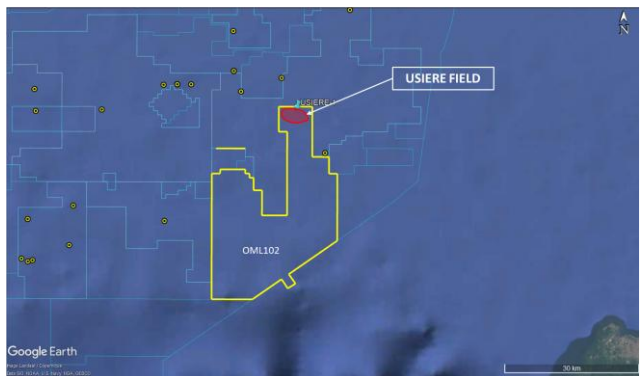
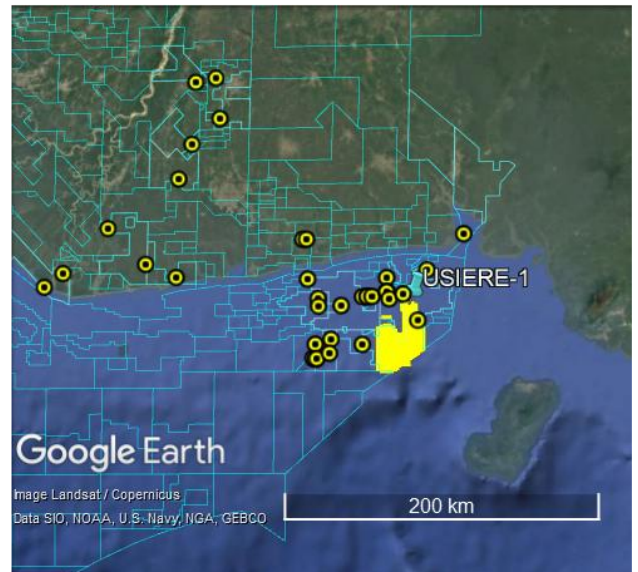
**NIGERIAN UPSTREAM
PETROLEUM REGULATORY
COMMISSION**

PPL 2A55 covers an area excised from OML 102 in accordance with the Petroleum Industry Act (PIA) 2021. PPL 2A55 is situated in eastern offshore Niger Delta in 30 metres water depth. The block is covered by 3D seismic data acquired by TotalEnergies.

The Usiere field is located in the Shallow Offshore Depobelt of the eastern Niger Delta sedimentary basin. The closest processing facility is Esuk Platform.

Usiere-1 was drilled by NNPC between Oct 6 and Dec 10, 1981, to a total depth of 7,559 feet (MD). The well penetrated a total of 44 feet gross pay of oil in two (2) sands. The well was subsequently plugged and abandoned.

OML 102 is currently operated by TotalEnergies.





NIGERIAN UPSTREAM PETROLEUM REGULATORY COMMISSION

For all inquiries, please
contact us at

br2025@nuprc.gov.ng