



**NIGERIAN UPSTREAM
PETROLEUM REGULATORY
COMMISSION**

Nigeria 2025

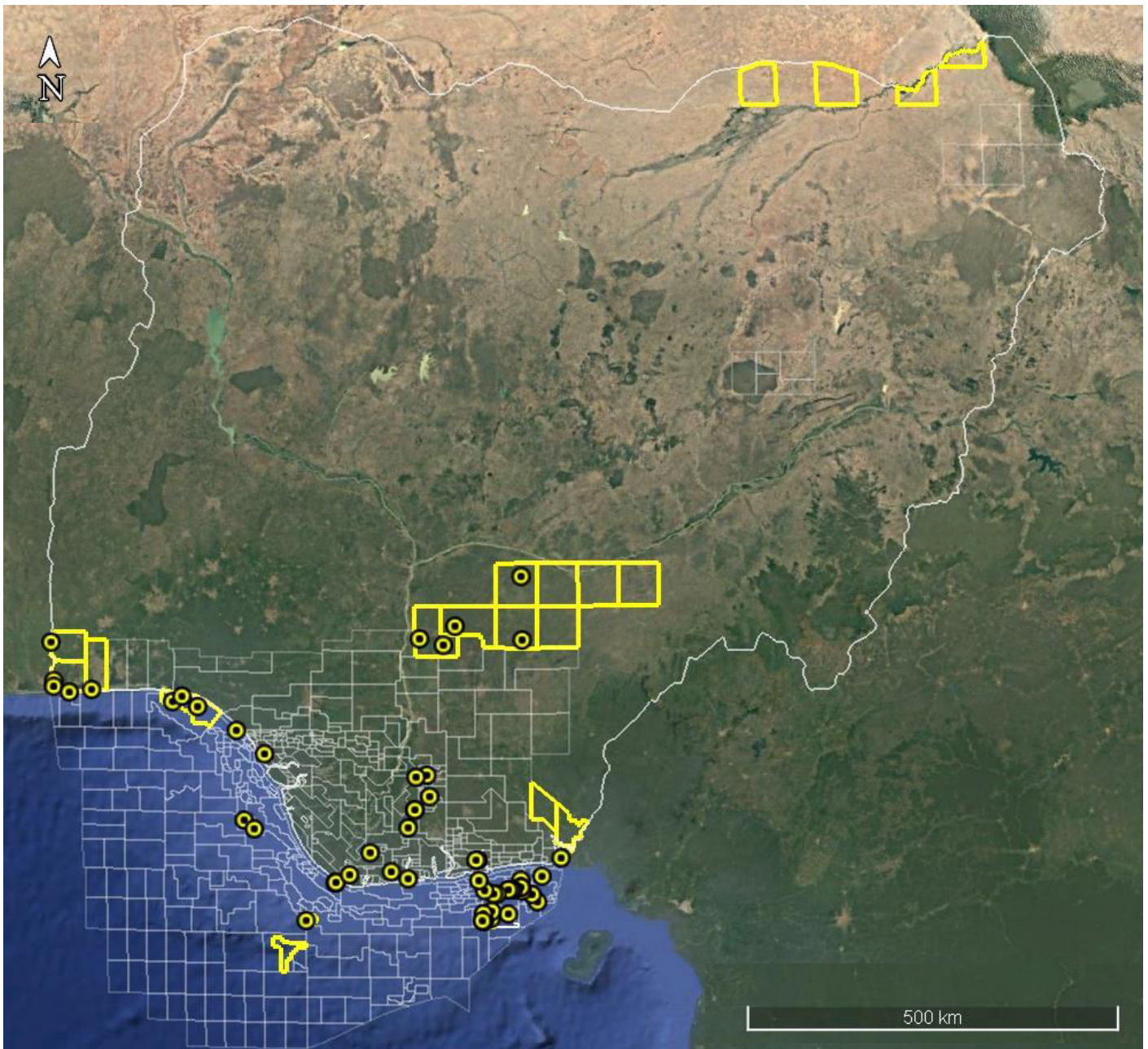
Licensing Round

PPL 309

Nigeria 2025 Licensing Round Block
Information Table



**NIGERIAN UPSTREAM
 PETROLEUM REGULATORY
 COMMISSION**



BENIN BASIN BLOCKS ON OFFER

Block Name	Block km ² (Approx.)	Data type	Data km ²	Terrain
PPL 307	xxx			Land
PPL 308	xxx	Afowo-1, Bodashe-1 & Ilepaw-1		Land
PPL 309	1292.41	Ojo-1		Land

For all enquires please contact us at br2025@nuprc.gov.ng

Nigeria 2025 Licensing Round

PPL 309



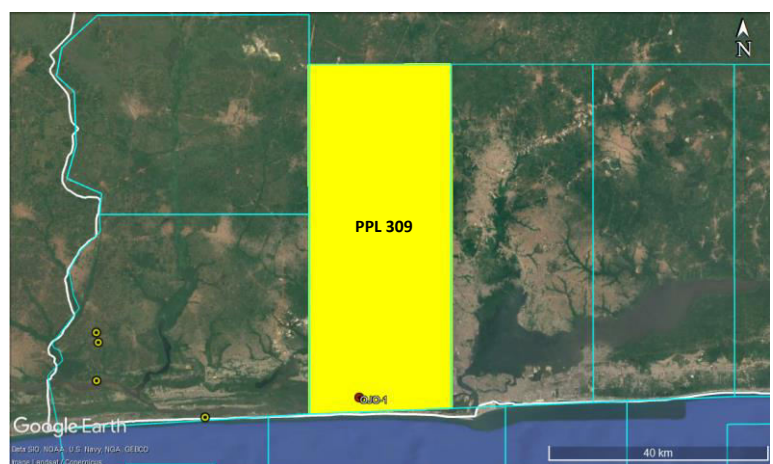
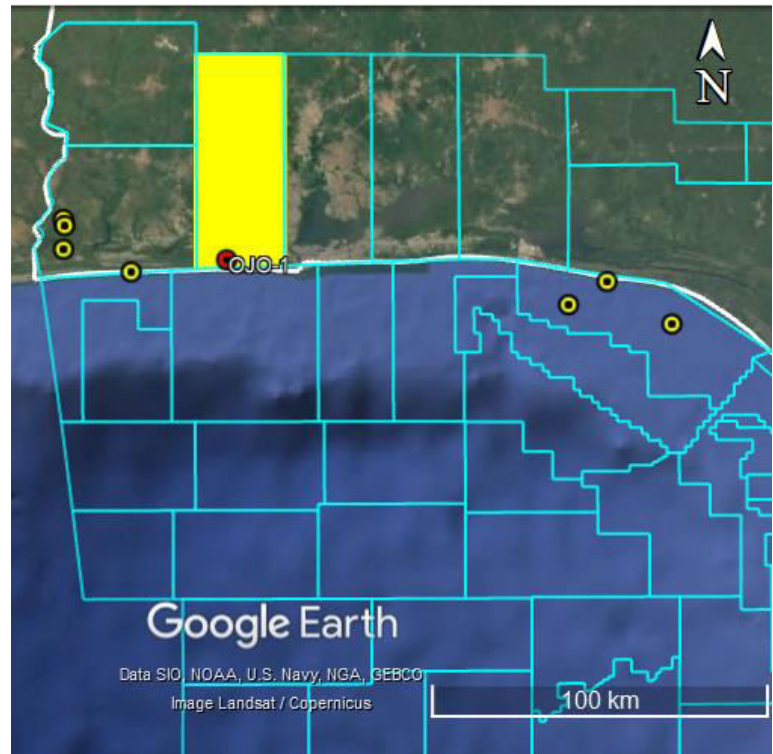
**NIGERIAN UPSTREAM
PETROLEUM REGULATORY
COMMISSION**

PPL-309 lies along Nigeria's western boundary with the Benin Republic and extends across Lagos and Ogun State. The block is situated within the Benin Basin, with one well drilled in its southern section.

The only well - Ojo-1, was drilled by Mobil (ex-Tenneco) in October 1960 to a total measured depth of 6,325 feet.

The area falls within the Transform Margin Basin situated in the Benin Basin in onshore Nigeria. Two major petroleum plays are recognized in the Nigerian Transform Margin: the syn-transform Lower Cretaceous and the post-transform Upper Cretaceous. Source rocks evolved from deeper Aptian lacustrine shales to shallower Mid-Albian marginal-marine shales as rifting progressed.

The Upper Cretaceous petroleum system is sourced primarily from Cenomanian–Turonian shales deposited under deep, anoxic marine conditions. Reservoir opportunities are provided by Albian to Santonian shallow- to deep-marine sandstones.





NIGERIAN UPSTREAM PETROLEUM REGULATORY COMMISSION

For all inquiries, please
contact us at

br2025@nuprc.gov.ng