



**NIGERIAN UPSTREAM  
PETROLEUM REGULATORY  
COMMISSION**

# **Nigeria 2025**

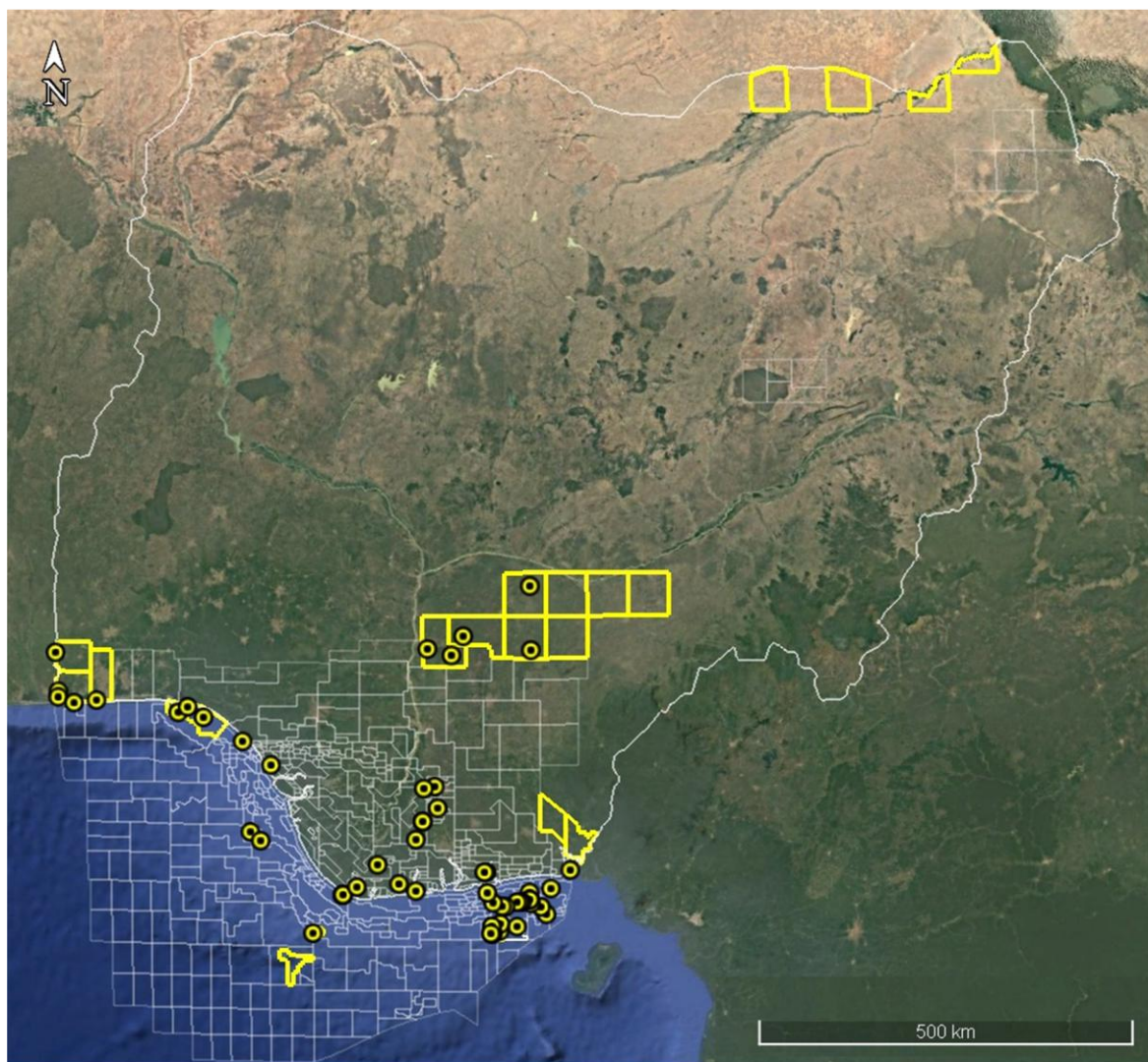
## **Licensing Round**

**PPL 2A34**

# Nigeria 2025 Licensing Round Block Information Table



**NIGERIAN UPSTREAM  
PETROLEUM REGULATORY  
COMMISSION**



## EASTERN OFFSHORE NIGER DELTA BLOCKS ON OFFER

Block Name	Block km <sup>2</sup> (Approx.)	Data type	Data km <sup>2</sup>	Water Depth (m)
PPL 2A31		3D Seismic + Ikuru-1		n/a
<b>PPL 2A34</b>	<b>5</b>	<b>3D Seismic + Kenam-1</b>		<b>23</b>
PPL 2A39		3D Seismic + Ebet-1		20
PPL 2A40		3D Seismic + Ebiya-1		24
PPL 2A41		3D Seismic + Idiok-1		15
PPL 2A42		3D Seismic + Oyobio-1, Oyobio-1 ST		38
PPL 2A43		3D Seismic + Utai-1, Utai-2, Utai-13		21
PPL 2A44		3D Seismic + Usari East-1, 2		22
PPL 2A45		3D Seismic + Obio-1		n/a
PPL 2A52		3D Seismic + Ayama-1, 2		61
PPL 2A53		3D Seismic + LHH-1		n/a
PPL 2A55		3D Seismic + Usiere-1		26.2
PPL 2A56		3D Seismic + Offiong-1		25
PPL 2A57		3D Seismic + Nkanda-1		23

For all enquires please contact us at [br2025@nuprc.gov.ng](mailto:br2025@nuprc.gov.ng)

## Nigeria 2025 Licensing Round

# PPL 2A34



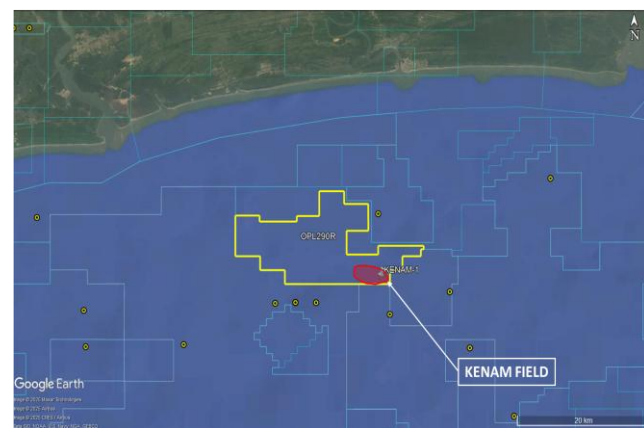
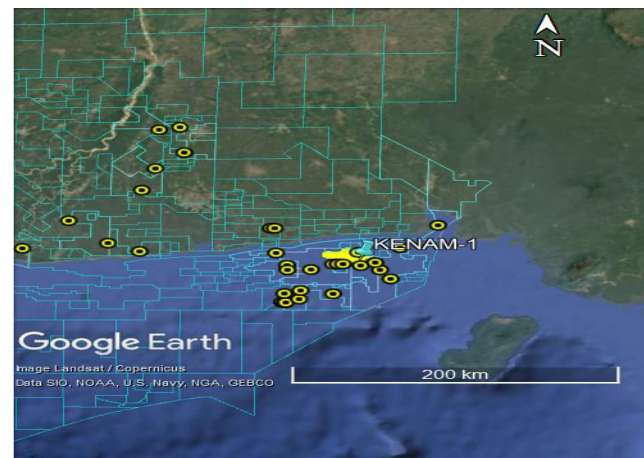
**NIGERIAN UPSTREAM  
PETROLEUM REGULATORY  
COMMISSION**

PPL 2A34 covers an area excised from OML 153 in accordance with the Petroleum Industry Act (PIA) 2021. PPL 2A34 is situated in shallow offshore eastern Niger Delta sedimentary basin in 23 metres water depth. The block is covered by 3D seismic data acquired by Elf Petroleum (TotalEnergies). The closest processing facility is Idoho Platform (Mobil).

Kenam field was discovered by Elf Petroleum (TotalEnergies) through the drilling of the Kenam-1 between November 26, 1990 and January 4, 1991, to a total depth of 9,862.21 feet (MD).

Kenam-1 encountered two hydrocarbon-bearing sands (Sands A and B), with a combined estimated hydrocarbon net pay of 17.5 feet. The well was subsequently suspended.

OML 153 is currently operated by Conoil Producing.





# **NIGERIAN UPSTREAM PETROLEUM REGULATORY COMMISSION**

For all inquiries, please  
contact us at

[br2025@nuprc.gov.ng](mailto:br2025@nuprc.gov.ng)