

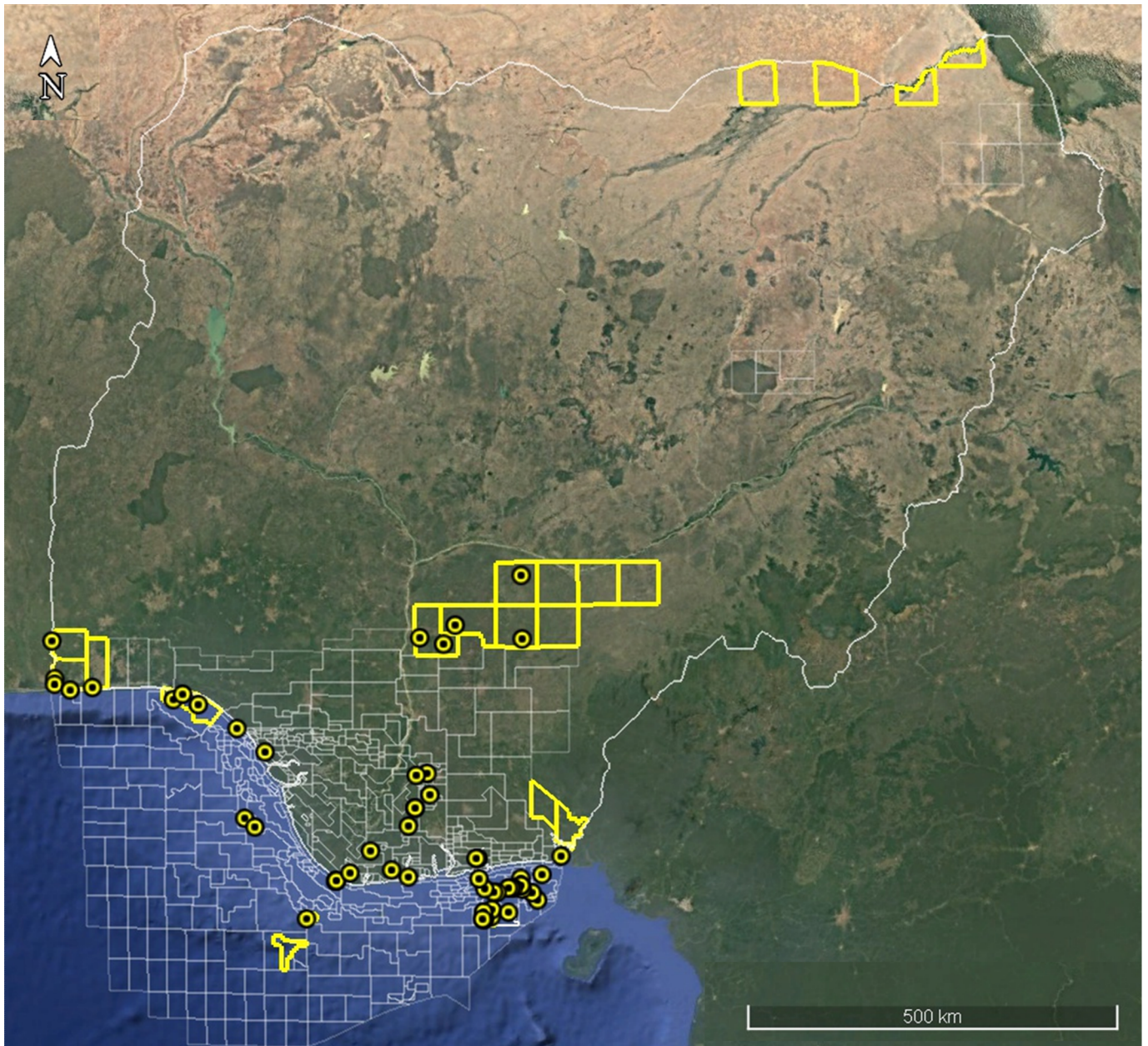


**NIGERIAN UPSTREAM
PETROLEUM REGULATORY
COMMISSION**

Nigeria 2025

Licensing Round

PPL 2A37



WESTERN NIGER DELTA BLOCKS ON OFFER

Block Name	Block km ² (Approx.)	Data type	Data km ²	Water Depth (m)
PPL 2A33	xx	3D Seismic + Amabilo-1		101
PPL 2A35	xx	3D Seismic + Misty-1		85
PPL 2A36	xx	3D Seismic + Olori-1		7
PPL 2A37	61.88	3D Seismic + Foniweitoro-1		6
Block Name	Block km²	Data type	Data km²	Terrain
PPL 2A38	xx	3D Seismic + Idege-1		Onshore Swamp
PPL 2A49	xx	3D Seismic + Bobi-1		Onshore Swamp

For all enquires please contact us at br2025@nuprc.gov.ng

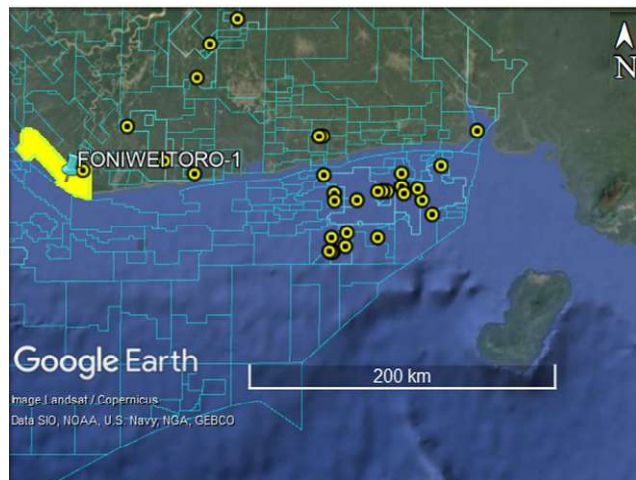


PPL 2A37 covers an area excised from OML 59 in accordance with the Petroleum Industry Act (PIA) 2021. PPL 2A37 is situated in shallow offshore western Niger Delta sedimentary basin in 8m of water depth. Available data on the block includes 3D seismic acquired by Conoil in 2002 and two wells – Foniweitoro-1. OML 59 is currently operated by Conoil.

The Foniweitoro-1 was drilled by TotalEnergies (ex-Elf Petroleum) from May 11 to June 1, 1978, to a total depth of 10,023 feet MD. The well was drilled off structure, but the mapping of the PPL shows good prospects supported by strong attributes on structure that can be tested with new wells.

The well was subsequently plugged and abandoned.

The closest facility to PPL 2A37 is the Otuo Platform (Conoil).





NIGERIAN UPSTREAM PETROLEUM REGULATORY COMMISSION

For all inquiries, please
contact us at

br2025@nuprc.gov.ng