



**NIGERIAN UPSTREAM  
PETROLEUM REGULATORY  
COMMISSION**

# **Nigeria 2025**

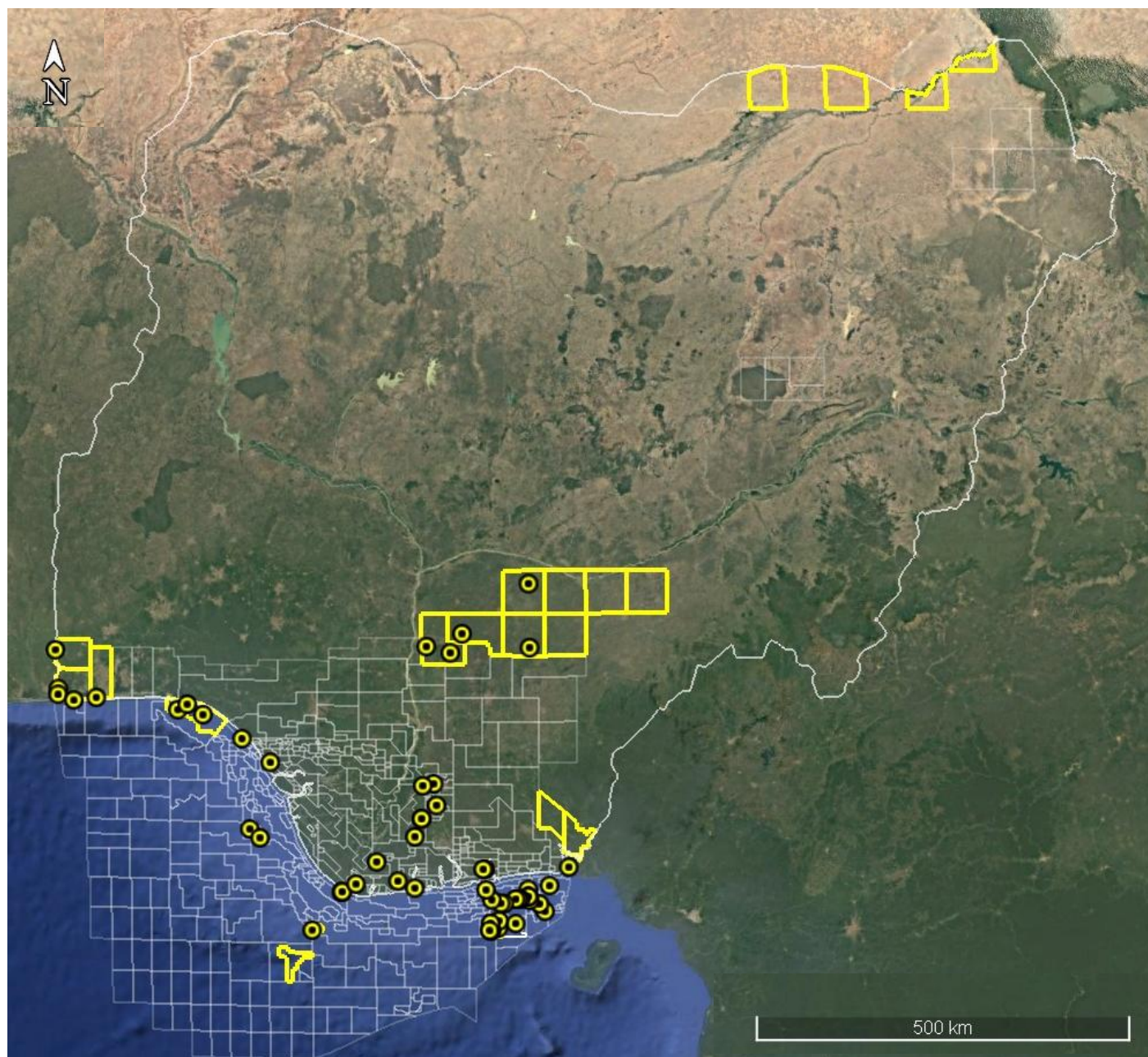
## **Licensing Round**

### **PPL 2010**

# Nigeria 2025 Licensing Round Block Information Table



**NIGERIAN UPSTREAM  
PETROLEUM REGULATORY  
COMMISSION**



## NIGER DELTA BASIN OFFSHORE BLOCKS ON OFFER

Block Name	Block km <sup>2</sup> (Approx)	Data type	Data km <sup>2</sup>	Water Depth (m)
PPL 2A58	172.8	3D Seismic + Lobia-1	172.8	60-200
PPL 2A60	342.0	3D Seismic + Ediye-1 & 2, Enin-1, LOO-1, Obufa-1 & 2, Utip-1		60 - 105
<b>PPL 2010</b>	<b>644.6</b>	<b>3D Seismic</b>		<b>300-700</b>

For all enquires please contact us at [br2025@nuprc.gov.ng](mailto:br2025@nuprc.gov.ng)

# Nigeria 2025 Licensing Round

## PPL 2010

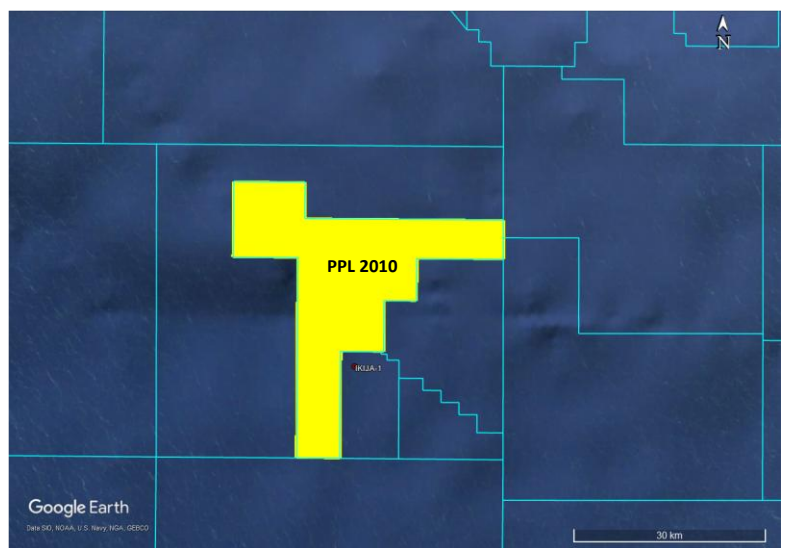
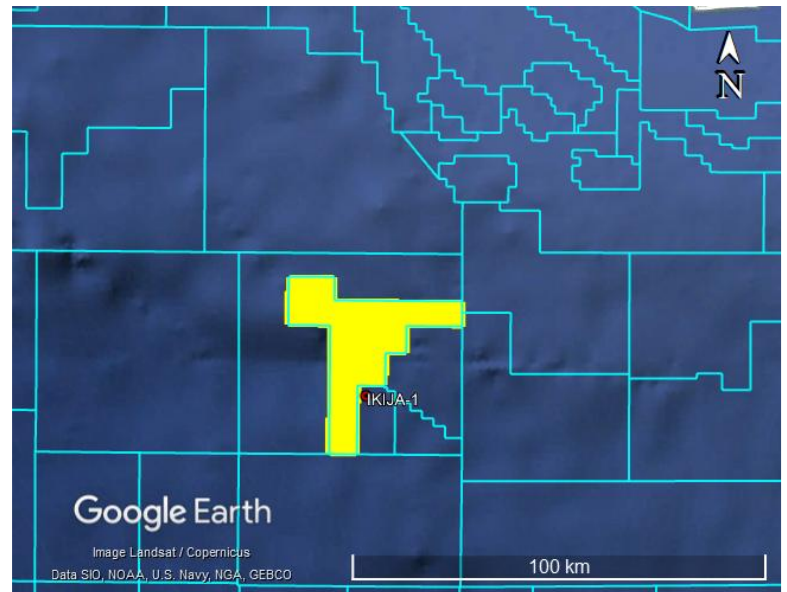


**NIGERIAN UPSTREAM  
PETROLEUM REGULATORY  
COMMISSION**

Block PPL 2010 covers an area excised from OML 127 in accordance with the Petroleum Industry Act (PIA) 2021. It lies deepwater offshore with water depths ranging between 200 to 700m. The block is fully covered by 3D acquired by Chevron.

The PPL 2010 block is located in the central part of the deep offshore Niger Delta sedimentary basin. The block is bounded to the east by the Agabami and Ikija fields. OML 127 is currently operated by Chevron Nigeria Limited.

No wells have been drilled in PPL2010





# **NIGERIAN UPSTREAM PETROLEUM REGULATORY COMMISSION**

For all enquiries, please  
contact us at

[br2025@nuprc.gov.ng](mailto:br2025@nuprc.gov.ng)