



**NIGERIAN UPSTREAM
PETROLEUM REGULATORY
COMMISSION**

Nigeria 2025

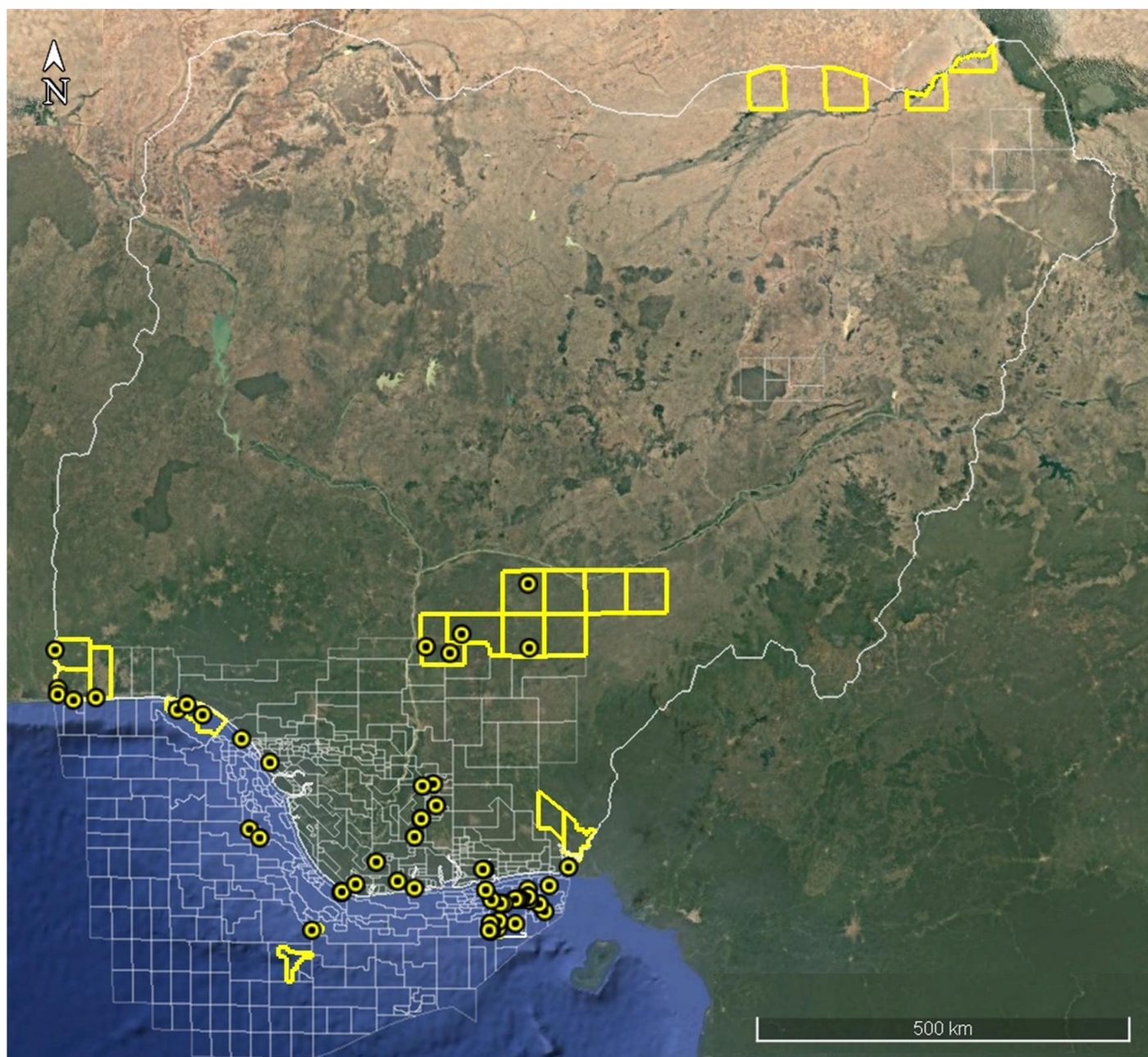
Licensing Round

PPL 2A49

Nigeria 2025 Licensing Round Block Information Table



**NIGERIAN UPSTREAM
PETROLEUM REGULATORY
COMMISSION**



WESTERN NIGER DELTA BLOCKS ON OFFER

Block Name	Block km ²	Data type	Data km ²	Water Depth (m)
PPL 2A33	xx	3D Seismic + Amabilo-1		xx
PPL 2A35	xx	3D Seismic + Misty-1		xx
PPL 2A36	xx	3D Seismic + Olori-1		xx
Block Name	Block km ² (Approx.)	Data type	Data km ²	Terrain
PPL 2A49	68	3D Seismic + Bobi-1		Onshore Swamp

For all enquires please contact us at br2025@nuprc.gov.ng

Nigeria 2025 Licensing Round

PPL 2A49



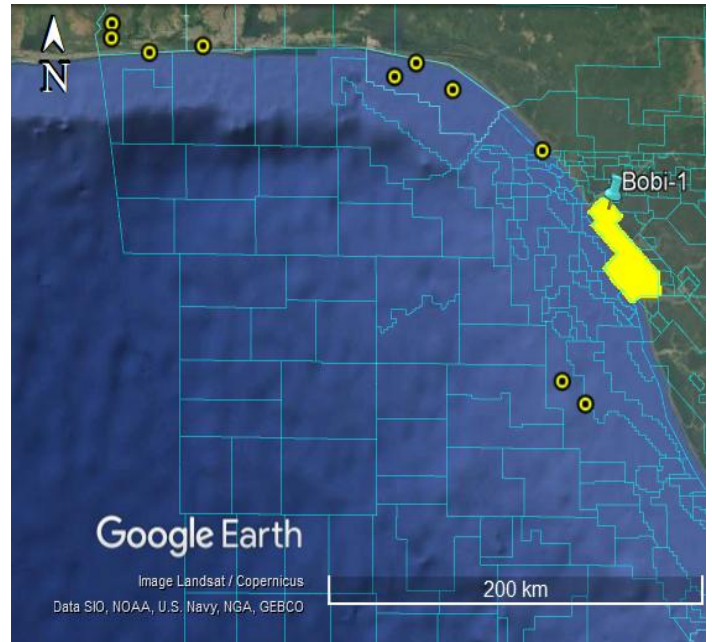
**NIGERIAN UPSTREAM
PETROLEUM REGULATORY
COMMISSION**

PPL 2A49 covers an area excised from OML 43 in accordance with the Petroleum Industry Act (PIA) 2021. PPL 2A49 is situated in a swamp terrain, onshore Niger Delta close to the mouth of Benin River. The block is covered by 3D seismic data acquired by SPDC in 1991.

The Bobi field is located in the Central Swamp Depobelt, swamp terrain of western Niger Delta sedimentary basin. The closest flowstations are those of Dibi field (Chevron) and Otumara field (Renaissance Africa).

Bobi field was discovered by SPDC through the drilling of the Bobi-1 between August 21 and September 6, 1972, to a total depth of 8,000 feet (MD). Bobi-1 encountered two hydrocarbon-bearing sands with a combined estimated hydrocarbon net pay of 33.5 feet. The well was plugged and abandoned.

OML 43 is currently operated by Renaissance Energy Africa.





NIGERIAN UPSTREAM PETROLEUM REGULATORY COMMISSION

For all enquires please
contact us at

br2025@nuprc.gov.ng