



**NIGERIAN UPSTREAM  
PETROLEUM REGULATORY  
COMMISSION**

# **Nigeria 2025**

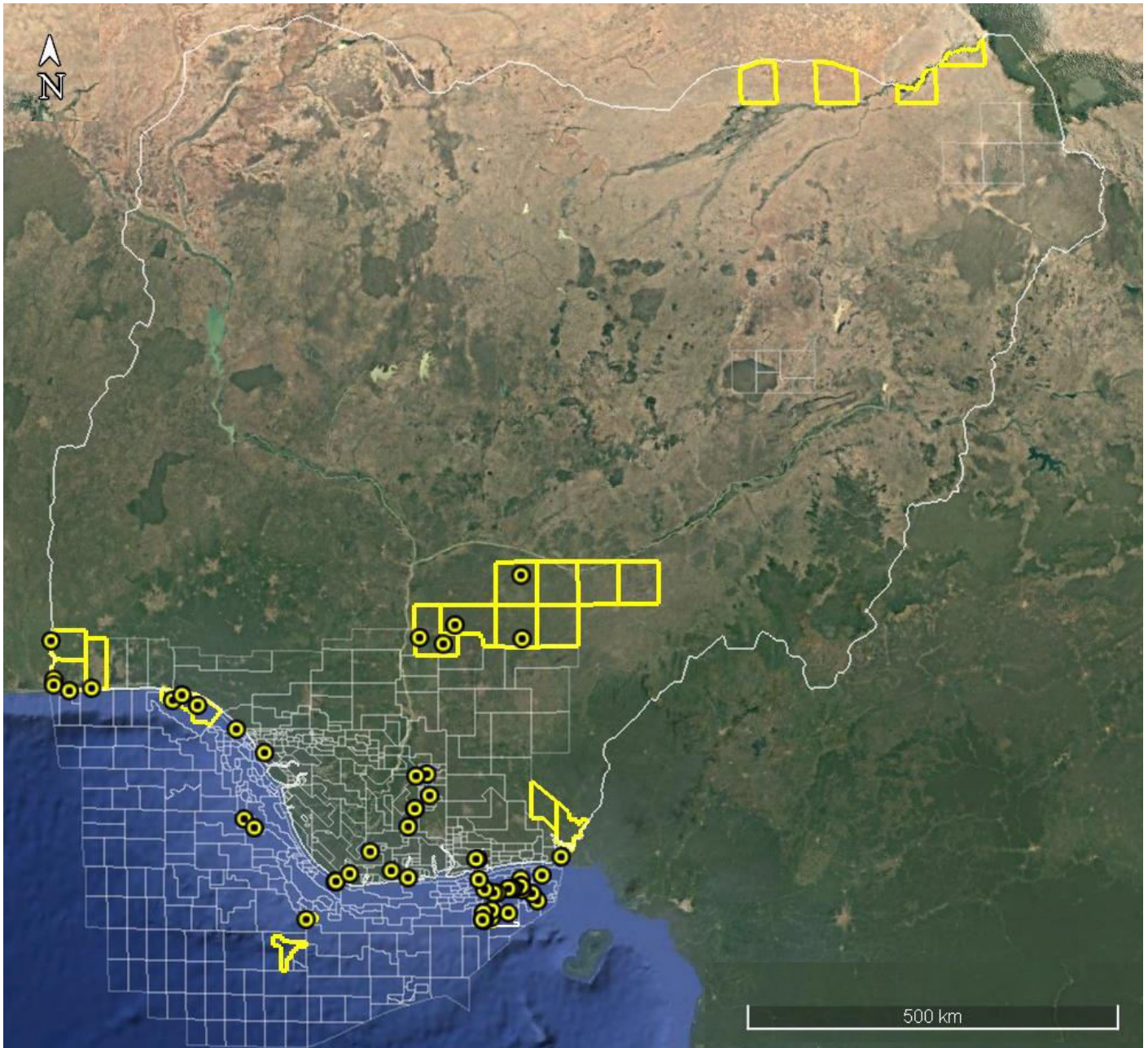
## **Licensing Round**

**PPL 308**

Nigeria 2025 Licensing Round Block  
**Information Table**



**NIGERIAN UPSTREAM  
 PETROLEUM REGULATORY  
 COMMISSION**



**BENIN BASIN BLOCKS ON OFFER**

Block Name	Block km <sup>2</sup> (Approx.)	Data type	Data km <sup>2</sup>	Terrain
PPL 307	xxx			Land
<b>PPL 308</b>	<b>1354.66</b>	<b>Afowo-1, Bodashe-1 &amp; Ilepaw-1</b>		<b>Land</b>
PPL 309	Xxx	Ojo-1		Land

For all inquiries, please contact us at [br2025@nuprc.gov.ng](mailto:br2025@nuprc.gov.ng)

# Nigeria 2025 Licensing Round

## PPL 308



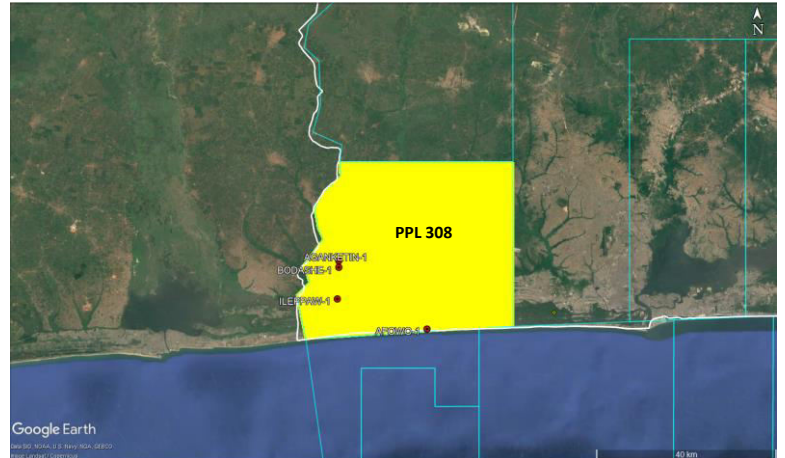
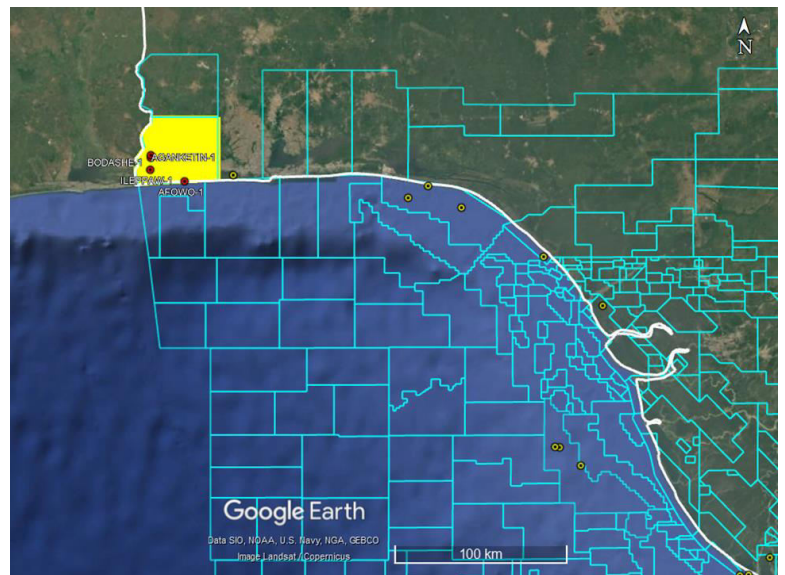
**NIGERIAN UPSTREAM  
PETROLEUM REGULATORY  
COMMISSION**

The PPL-308 lies along Nigeria's western boundary with the Republic of Benin, extending across Lagos and Ogun States. The block occupies a relatively frontier onshore area, with three (3) wells drilled in its southern section.

Three wells were drilled by Mobil (ex-Tenneco) - Afowo-1 in December 1959, Bodashe-1 - January 1960 and Ilepaw-1 - December 1960. The total measured depths (MD) for Afowo-1, Bodashe-1 and Ilepaw-1 are 7,049 ft, 4,949 ft, and 5,661 ft respectively.

The area falls within the Transform Margin Basin situated in the Benin Basin in onshore Nigeria. Two major petroleum plays are recognized in the Nigerian Transform Margin: the syn-transform Lower Cretaceous and the post-transform Upper Cretaceous. Source rocks evolved from deeper Aptian lacustrine shales to shallower Mid-Albian marginal-marine shales as rifting progressed.

The Upper Cretaceous petroleum system is sourced primarily from Cenomanian–Turonian shales deposited under deep, anoxic marine conditions. Reservoir opportunities are provided by Albian to Santonian shallow- to deep-marine sandstones.





# NIGERIAN UPSTREAM PETROLEUM REGULATORY COMMISSION

For all inquiries, please  
contact us at

[br2025@nuprc.gov.ng](mailto:br2025@nuprc.gov.ng)